

PPORT FOUR DEPARTURE (RNAV)

ATIS 119.55
CLNC DEL
135.9
GND CON
121.9
MANCHESTER TOWER
121.3 239.025
BOSTON DEP CON
124.9 269.075

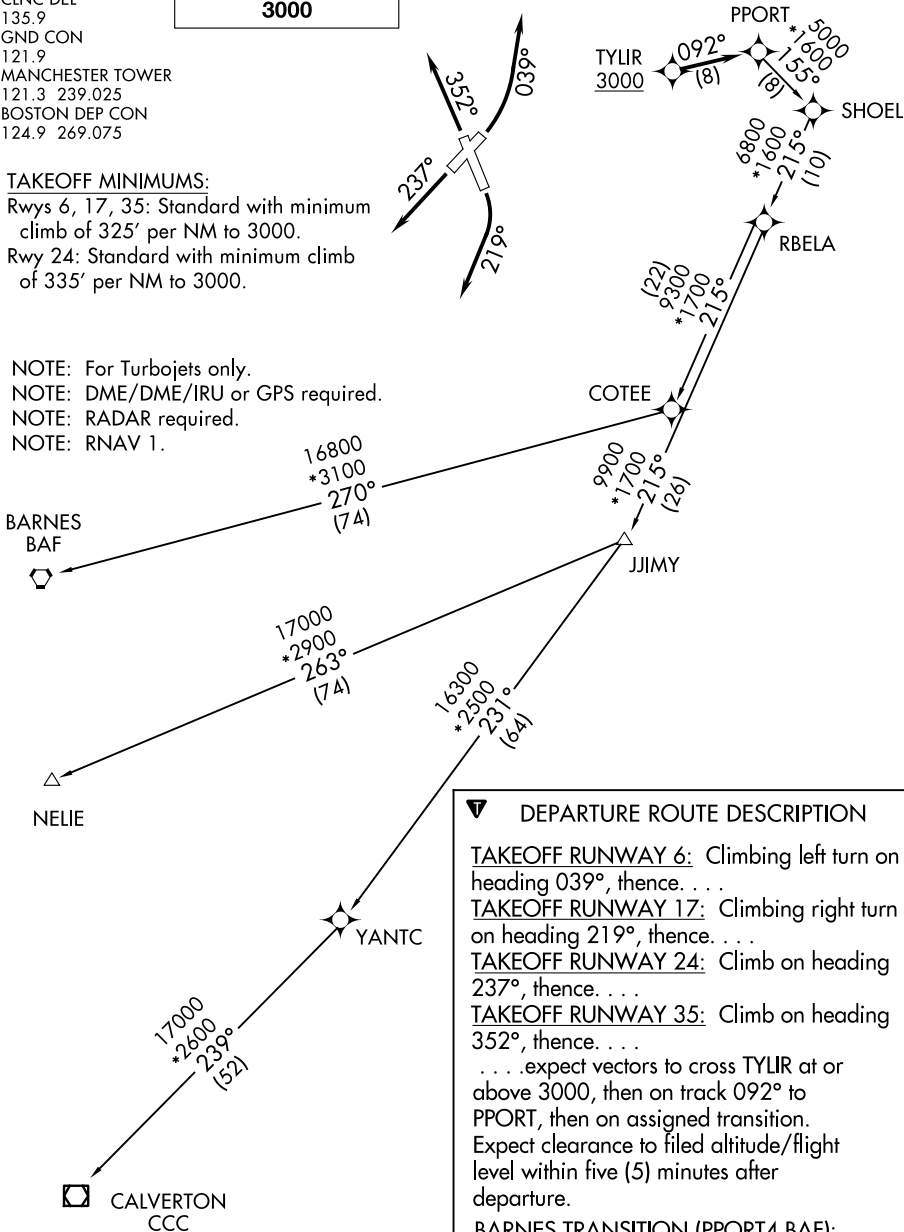
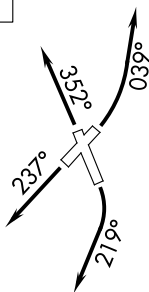
**TOP ALTITUDE:
3000**

TAKEOFF MINIMUMS:

Rwys 6, 17, 35: Standard with minimum climb of 325' per NM to 3000.

Rwy 24: Standard with minimum climb of 335' per NM to 3000.

- NOTE: For Turbojets only.
- NOTE: DME/DME/IRU or GPS required.
- NOTE: RADAR required.
- NOTE: RNAV 1.



DEPARTURE ROUTE DESCRIPTION

TAKEOFF RUNWAY 6: Climbing left turn on heading 039°, thence. . . .

TAKEOFF RUNWAY 17: Climbing right turn on heading 219°, thence. . . .

TAKEOFF RUNWAY 24: Climb on heading 237°, thence. . . .

TAKEOFF RUNWAY 35: Climb on heading 352°, thence. . . .

. . . expect vectors to cross TYLIR at or above 3000, then on track 092° to PPORT, then on assigned transition. Expect clearance to filed altitude/flight level within five (5) minutes after departure.

BARNES TRANSITION (PPORT4.BAF):

CALVERTON TRANSITION (PPORT4.CCC):

NELIE TRANSITION (PPORT4.NELIE):

NOTE: Chart not to scale.

NE-1, 16 APR 2026 to 14 MAY 2026

NE-1, 16 APR 2026 to 14 MAY 2026