


WAAS CH 99614 W35A	APP CRS 352°	Rwy Ldg TDZE Apt Elev	7650 265 266
--	------------------------	-----------------------------	---

RNAV (GPS) Y RWY 35

MANCHESTER BOSTON RGNL (MHT)

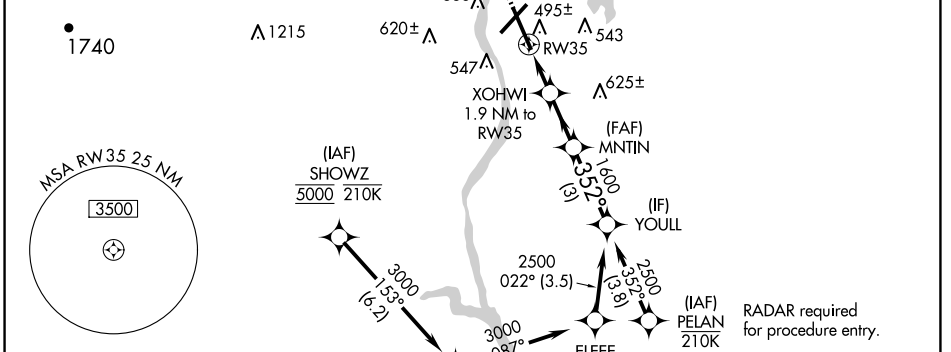
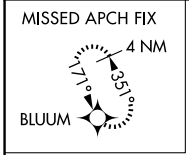
▼ For uncompensated Baro-VNAV systems, LNAV/VNAV NA below -18°C (0°F) or above 54°C (130°F). DME/DME RNP-0.3 NA. When local altimeter setting not received, use Nashua altimeter setting: increase LPV DA to 497 and all Cats visibility ¼ mile; increase LNAV/VNAV DA to 793 and all Cats visibility ½ mile; increase all MDA 40 feet and LNAV Cats C/D visibility ½ mile and Circling Cat C visibility ¼ mile. For inop ALSF, increase LNAV Cats A/B visibility to RVR 5500 and Cats C/D visibility to ¾ mile. VDP and Baro-VNAV NA when using Nashua altimeter setting. Helicopter visibility reduction below ¾ SM NA for LNAV/VNAV and LNAV. Inop table does not apply to LPV when using Nashua altimeter setting; for inop ALSF when using Nashua altimeter setting, increase LNAV Cats A/B visibility to RVR 6000 and LNAV Cats C/D to 1¾ mile.

ALSF-2

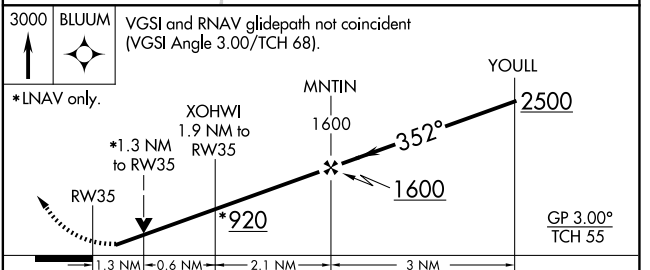
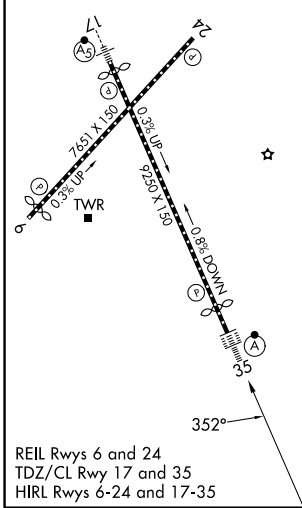


MISSED APPROACH:
Climb to 3000 direct BLUUM and hold, continue climb-in-hold to 3000.

ATIS 119.55	BOSTON APP CON 124.9 269.075	MANCHESTER TOWER 121.3 239.025	GND CON 121.9	CLNC DEL 135.9
-----------------------	--	--	-------------------------	--------------------------



ELEV 266	D	TDZE 265
----------	----------	----------



CATEGORY	A	B	C	D
LPV DA		465/18	200 (200-½)	
LNAV/VNAV DA		761/60	496 (500-1¼)	
LNAV MDA	760/40	495 (500-¾)	760/50	495 (500-1)
C CIRCLING	880-1	614 (700-1)	980-2 714 (800-2)	1100-2¾ 834 (900-2¾)

NE-1, 16 APR 2026 to 14 MAY 2026

NE-1, 16 APR 2026 to 14 MAY 2026