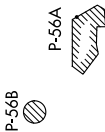


TOP ALTITUDE:
3000



TAKEOFF MINIMUMS

Rwy 8: Standard.
Rwy 26: Standard with a minimum
climb of 225' per NM to 2100.

NOTE: RNAV 1.

NOTE: RADAR required.

NOTE: DME/DME/IRU or GPS required.

NOTE: Turbo-jets only.

NOTE: Takeoff Rwy 8, if issued an ATC heading that
requires a westbound turn, climb heading 081°
to 1200 prior to turning for obstacle avoidance.

NOTE: Takeoff Rwy 26, if issued an ATC heading that
requires a right turn, climb heading 261° to
2400 prior to turning for obstacle avoidance.

NOTE: Chart not to scale.

NE-4, 16 APR 2026 to 14 MAY 2026

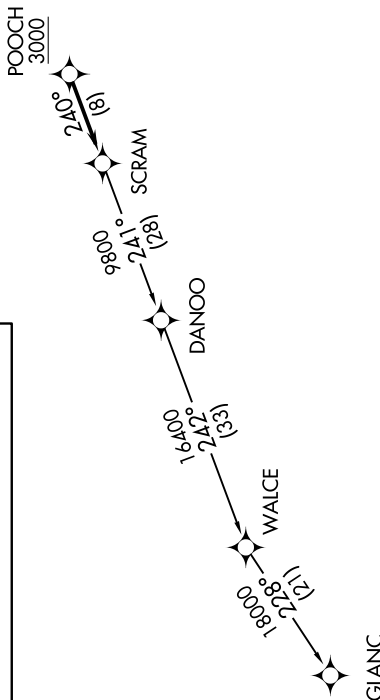
ASOS 119.925
CLNC DEL
121.8 257.65
132.075 269.075 (When Tower Closed)
GND CON
121.8 257.65
MARTINSBURG TOWER *
124.3 (CTAF) 233.7
POTOMAC DEP CON
126.825 239.025

▼ DEPARTURE ROUTE DESCRIPTION

Climb on heading assigned by ATC, expect RADAR
vectors to POOCH, then on track 240° to SCRAM,
thence

. . . . as depicted. Maintain 3000, expect
clearance to filed altitude within ten (10) minutes
after departure.

GLANC TRANSITION (SCRAM6.GLANC):



NE-4, 16 APR 2026 to 14 MAY 2026