


LOC/DME I-RRU <b>111.3</b> Chan 50	APP CRS <b>269°</b>	Rwy Ldg TDZE <b>862</b> Apt Elev <b>869</b>
--	------------------------	---

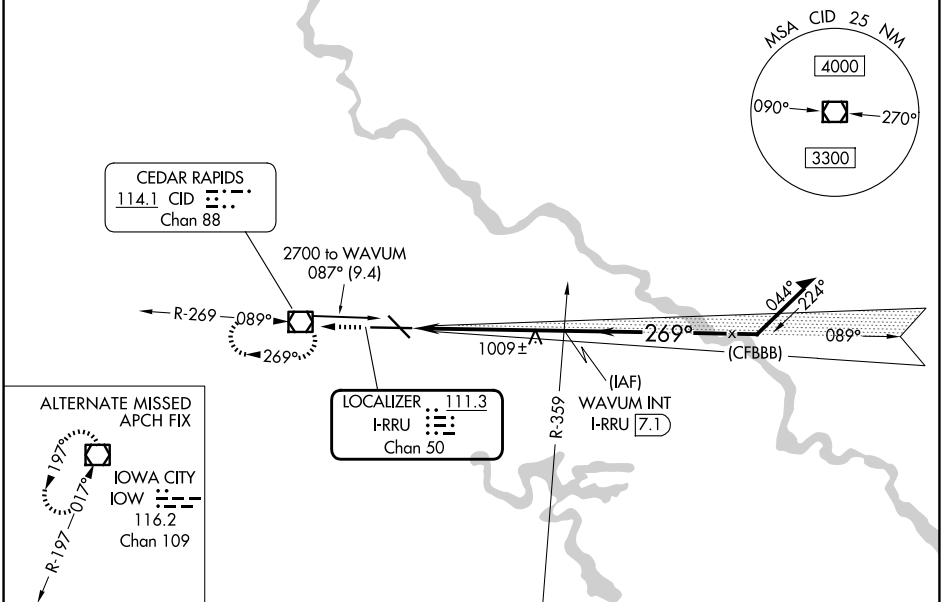
# ILS or LOC RWY 27

THE EASTERN IOWA (CID)

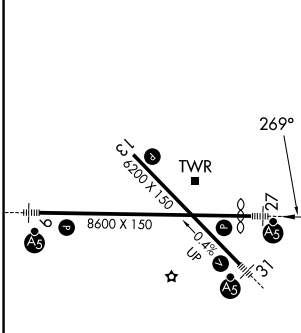
**⚠** VDP NA with Iowa City altimeter setting. Autopilot coupled approach NA below 1910.  
**⚠** When local altimeter setting not received, use Iowa City altimeter setting: increase DA to 1126 feet; increase all MDA 80 feet, increase S-LOC Cat C and D visibility to RVR 5000, and Circling Cat C and D visibility ¼ SM.  
 #RVR 1800 authorized with use of FD or HUD to DA (NA when using Iowa City altimeter setting).

**MALSR**  
  
**MISSED APPROACH:** Climb to 2900 direct CID VOR/DME and hold, continue climb-in-hold to 2900.

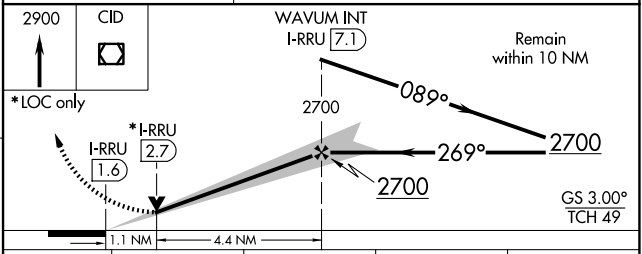
ATIS <b>124.15</b>	CEDAR RAPIDS APP CON * <b>119.7 266.8</b>	CEDAR RAPIDS TOWER * <b>118.7 (CTAF) 0 266.8</b>	GND CON <b>121.6</b>	UNICOM <b>122.95</b>
-----------------------	--	---	-------------------------	-------------------------



ELEV 869	<b>D</b>	TDZE 862
----------	----------	----------



MIRL Rwy 13-31 <b>Ⓛ</b>					
HIRL Rwy 9-27 <b>Ⓛ</b>					
REIL Rwy 13					
FAF to MAP 5.5 NM					
Knots	60	90	120	150	180
Min:Sec	5:30	3:40	2:45	2:12	1:50



CATEGORY	A	B	C	D
S-ILS 27 #	1062/24 200 (200-½)			
S-LOC 27	1260/24	398 (400-½)	1260/35	398 (400-⅝)
CIRCLING	1280-1 411 (500-1)	1320-1 451 (500-1)	1560-2 691 (700-2)	1560-2¼ 691 (700-2¼)

NC-3, 16 APR 2026 to 14 MAY 2026

NC-3, 16 APR 2026 to 14 MAY 2026