

LOC I-CID 109.3	APP CRS 089°	Rwy Ldg TDZE Apt Elev	8175 857 869
---------------------------	------------------------	-----------------------------	---

ILS or LOC RWY 9

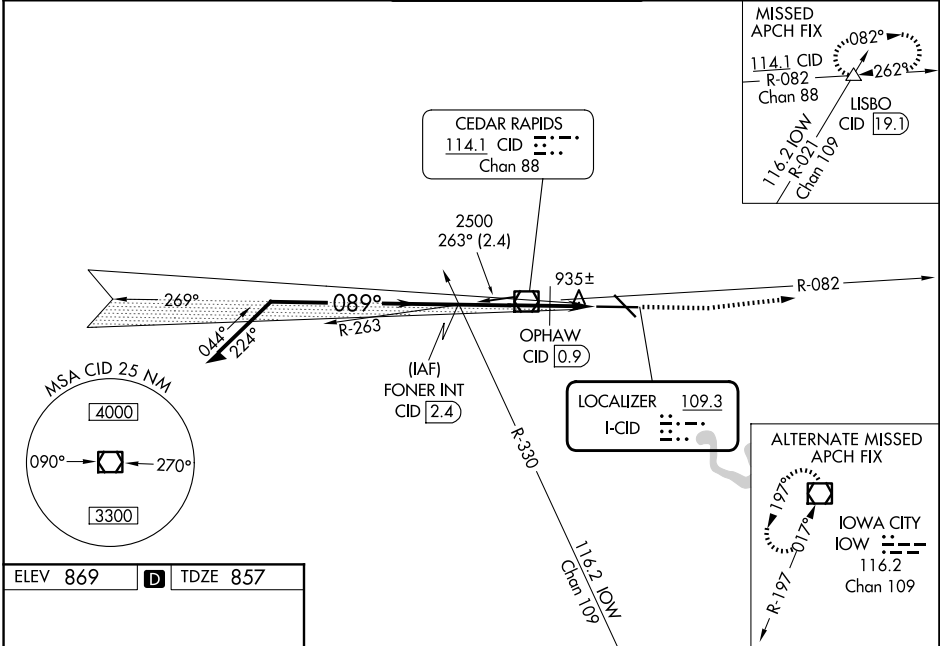
THE EASTERN IOWA (CID)

⚠ When local altimeter setting not received, use Iowa City altimeter setting and increase all DA 64 feet and all MDA 80 feet; increase S-LOC Cat D visibility to RVR 6000. OPHAW fix minimums: increase S-LOC Cat C visibility to RVR 4000 and Cat D to RVR 6000. When using Iowa City altimeter setting, for inop MALSR, increase S-ILS 9 all Cats visibility to RVR 5000. Autopilot coupled approach NA below 1100 MSL.
RVR 1800 authorized with use of FD or HUD to DA (NA when using Iowa City altimeter setting).

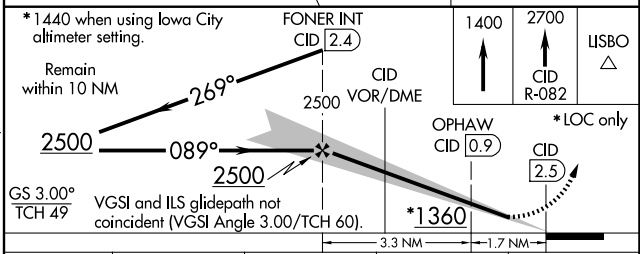
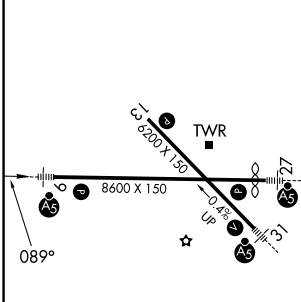


MISSED APPROACH: Climb to 1400 then climb to 2700 via CID VOR/DME R-082 to LISBO/CID VOR/DME 19.1 DME and hold.

ATIS 124.15	CEDAR RAPIDS APP CON* 119.7 266.8	CEDAR RAPIDS TOWER* 118.7 (CTAF) 266.8	GND CON 121.6	UNICOM 122.95
-----------------------	---	--	-------------------------	-------------------------



ELEV 869	D	TDZE 857
----------	---	----------



CATEGORY	A	B	C	D
S-ILS 9#	1057/24 200 (200-½)			
S-LOC 9	1360/24 503 (500-½)		1360/50 503 (500-1)	
OPHAW FIX MINIMUMS				
S-LOC 9	1220/24 363 (400-½)			1220/40 363 (400-¾)

NC-3, 16 APR 2026 to 14 MAY 2026

NC-3, 16 APR 2026 to 14 MAY 2026