

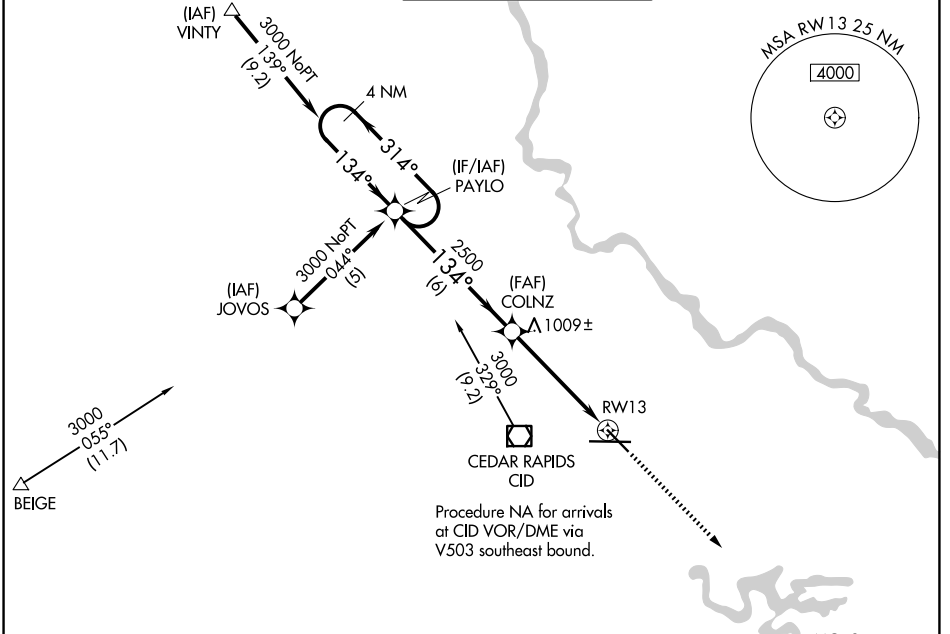
WAAS CH 86201 W13A	APP CRS 134°	Rwy Ldg TDZE Apt Elev	6200 869 869
--	------------------------	-----------------------------	---

RNAV (GPS) RWY 13

THE EASTERN IOWA (CID)

RNP APCH.		MISSED APPROACH: Climb to 3000 direct MORSE and hold.		
Baro-VNAV NA below -16°C (4°F).				

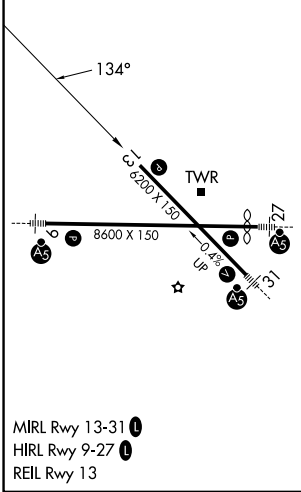
ATIS 124.15	CEDAR RAPIDS APP CON* 119.7 266.8	CEDAR RAPIDS TOWER* 118.7 (CTAF) 266.8	GND CON 121.6	UNICOM 122.95
-----------------------	---	--	-------------------------	-------------------------



NC-3, 16 APR 2026 to 14 MAY 2026

NC-3, 16 APR 2026 to 14 MAY 2026

ELEV 869	D	TDZE 869
----------	----------	----------



4 NM Holding Pattern	PAYLO		COLNZ		3000	MORSE
	GP 3.00° TCH 40		2500		*LNAV only.	
3000 ← 314°		134°		*1 NM to RWY 13		
6 NM		3.9 NM		1 NM		
CATEGORY	A	B	C	D		
LPV DA	1120-1 251 (300-1)					
LNNAV/VNAV DA	1200-1¼ 331 (400-1¼)					
LNNAV MDA	1260-1 391 (400-1)				1260-1¼ 391 (400-1¼)	

VGSI and descent angles not coincident (VGSI Angle 3.00/TCH 51).