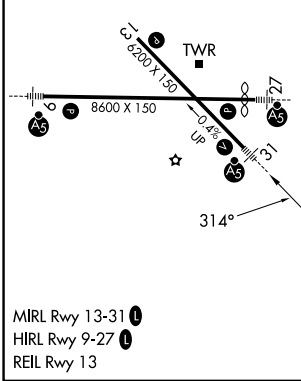
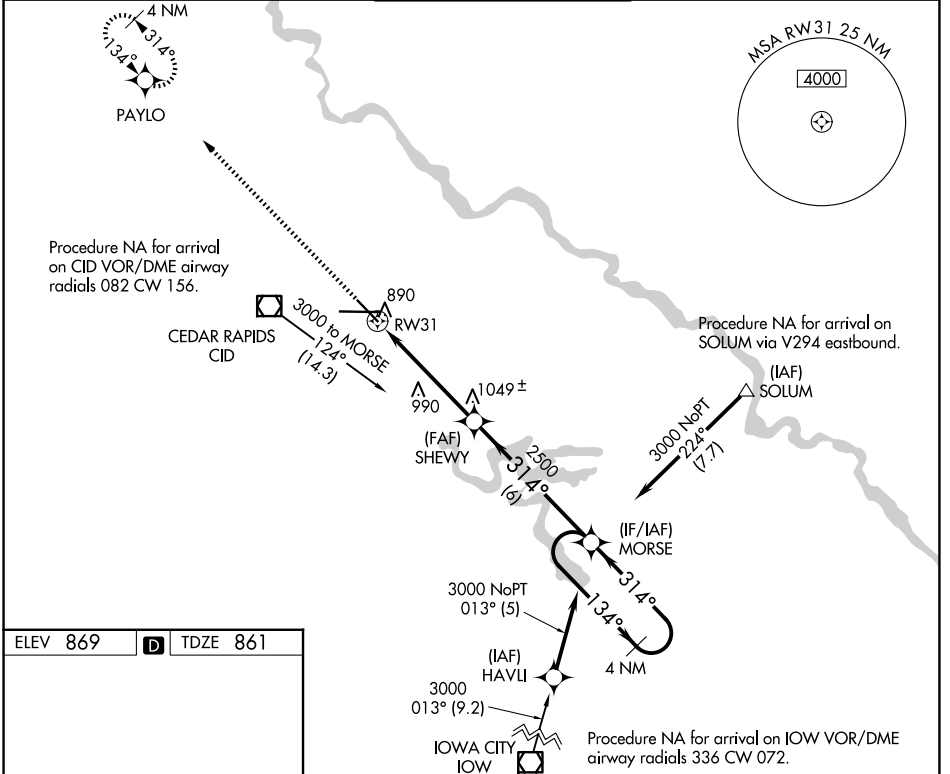


WAAS CH 77503 W31A	APP CRS 314°	Rwy Ldg TDZE Apt Elev	6200 861 869
--	------------------------	-----------------------------	---

RNAV (GPS) RWY 31

THE EASTERN IOWA (CID)

RNP APCH. Baro-VNAV NA below -16°C (4°F).		MALSR 	MISSED APPROACH: Climb to 3000 direct PAYLO and hold.	
ATIS 124.15	CEDAR RAPIDS APP CON* 119.7 266.8	CEDAR RAPIDS TOWER* 118.7 (CTAF) 266.8	GND CON 121.6	UNICOM 122.95



ELEV 869	D	TDZE 861	
3000	PAYLO	MORSE	4 NM Holding Pattern
*LNAV only *1.1 NM to RW31			
3000	SHEWY		MORSE
*LNAV only		*1.1 NM to RW31	
RW31		314°	
1.1		3.9 NM	
6 NM		3000	
134°		314°	
GP 3.00°		TCH 43	
CATEGORY	A	B	C
LPV DA	1120-½ 259 (300-½)		
LNAV/VNAV DA	1140-½	279 (300-½)	1140-¾ 279 (300-¾)
LNAV MDA	1240-½	379 (400-½)	1240-1 379 (400-1)

NC-3, 16 APR 2026 to 14 MAY 2026

NC-3, 16 APR 2026 to 14 MAY 2026