

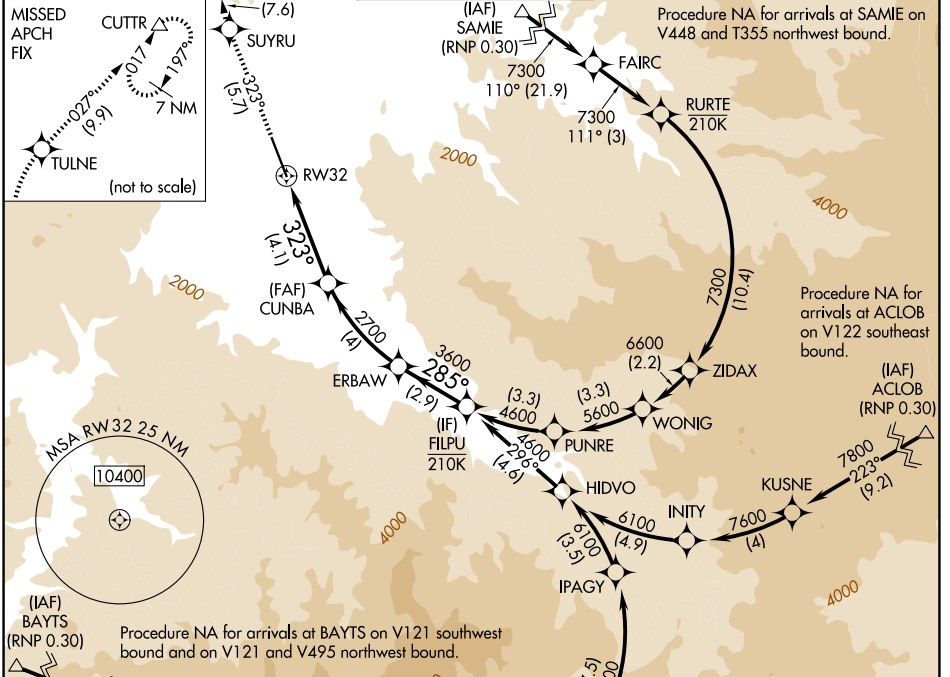
APP CRS	Rwy Ldg	8800
323°	TDZE	1335
	Apt Elev	1335

RNAV (RNP) Z RWY 32

ROGUE VALLEY INTL/MEDFORD (MFR)

RNP AR APCH-GPS.		MISSED APPROACH: Climb to 9000 on 323° to SUYRU, right turn to TULNE, then on track 027° to CUTTR and hold, continue climb-in-hold to 9000.
-2°C For uncompensated Baro-VNAV systems, procedure NA below -6°C or above 54°C.		

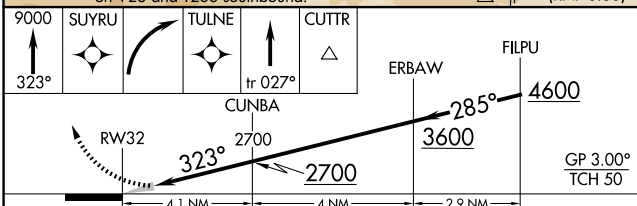
ATIS 127.25	CASCADE APP CON * 124.3 379.9	MEDFORD TOWER * 119.4 (CTAF) 257.8	GND CON 121.8	UNICOM 122.95
-----------------------	---	--	-------------------------	-------------------------



NW-1, 16 APR 2026 to 14 MAY 2026

NW-1, 16 APR 2026 to 14 MAY 2026

9000	SUYRU	TULNE	CUTTR
↑ 323°			
		tr 027°	



CATEGORY	A	B	C	D
RNP 0.10 DA	1683-1		348 (400-1)	
RNP 0.30 DA	1870-1½		535 (600-1½)	

AUTHORIZATION REQUIRED

