

APP CRS 143°	Rwy Ldg 8800
	TDZE 1303
	Apt Elev 1335

RNAV (GPS) Y RWY 14

ROGUE VALLEY INTL/MEDFORD (MFR)

RNP APCH.

⚠ When Medford altimeter setting not received, procedure NA.
Inop table does not apply to Cats C and D.

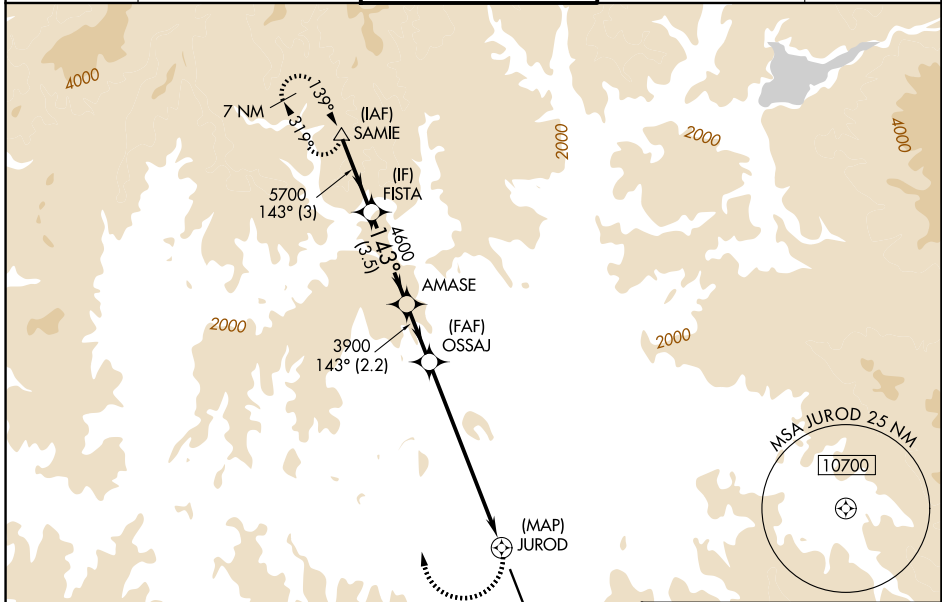
❄ -2°C

MALSR

A5

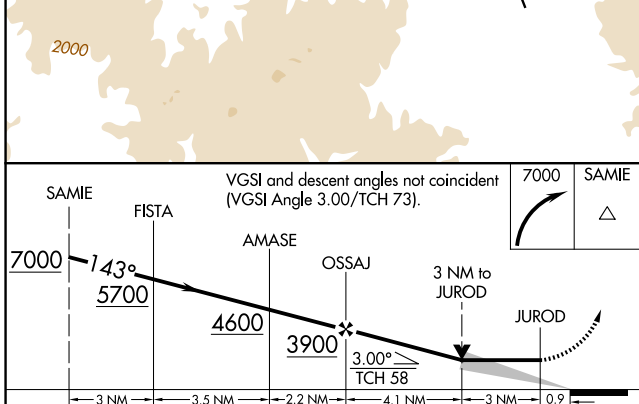
MISSED APPROACH: Climbing right turn 7000 direct SAMIE and hold, continue climb-in-hold to 7000.
*Missed approach requires minimum climb of 334 feet per NM to 4800.

ATIS 127.25	CASCADE APP CON * 124.3 379.9	MEDFORD TOWER * 119.4 (CTAF) 257.8	GND CON 121.8	UNICOM 122.95
-----------------------	-----------------------------------------	----------------------------------------------	-------------------------	-------------------------

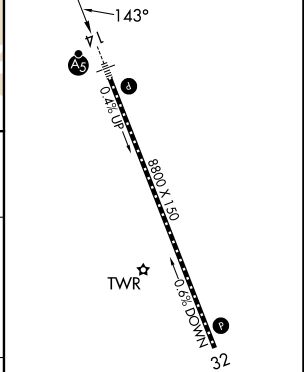


NW-1, 16 APR 2026 to 14 MAY 2026

NW-1, 16 APR 2026 to 14 MAY 2026



ELEV 1335 **D** TDZE 1303



CATEGORY	A	B	C	D
LNAV MDA*	2600/40 1297 (1300-3/4)	2600/55 1297 (1300-1)	2600-3 1297 (1300-3)	
LNAV MDA	2600/40 1297 (1300-3/4)	2600/55 1297 (1300-1)	3320-3 2017 (2000-3)	3460-3 2157 (2200-3)

CL Rwy 14-32 **L**
 TDZ/CL Rwy 14 **L**
 REIL Rwy 32 **L**
 HIRL Rwy 14-32 **L**