

WAAS CH <b>65601</b> <b>W09A</b>	APP CRS <b>094°</b>	Rwy Ldg TDZE <b>33</b> Apt Elev <b>33</b>	<b>6000</b>
--	------------------------	---	-------------

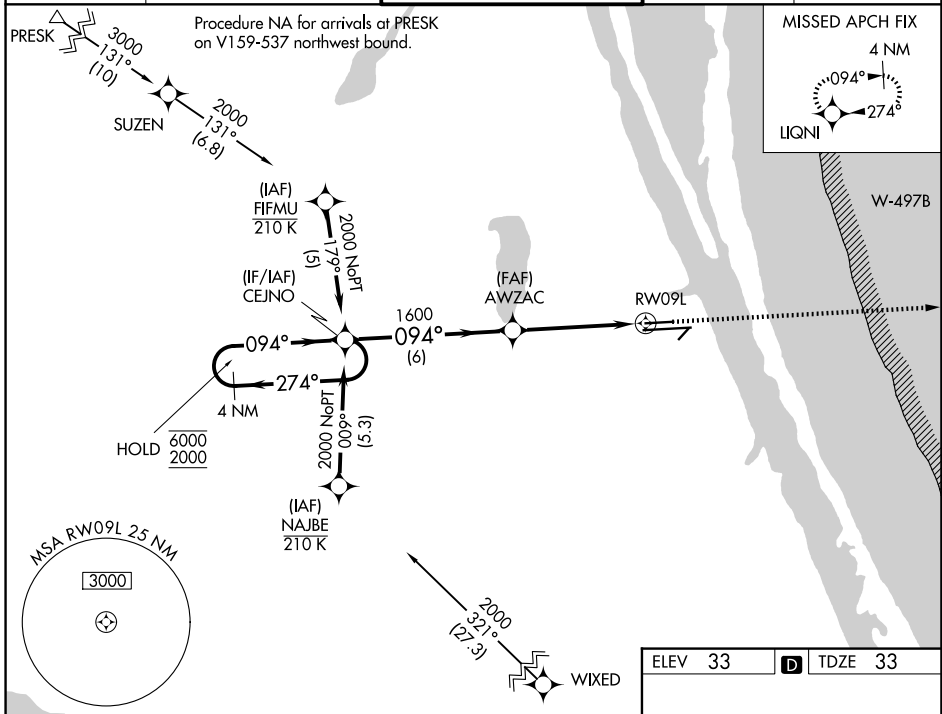
# RNAV (GPS) RWY 9L

MELBOURNE ORLANDO INTL (MLB)

RNP APCH - GPS.  
 For uncompensated Baro-VNAV systems, LNAV/VNAV NA below 2°C or above 54°C. Rwy 9L helicopter visibility reduction below 3/4 SM NA.

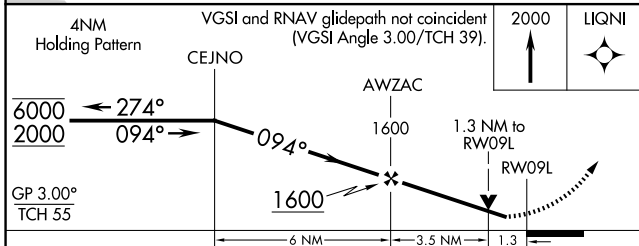
MISSED APPROACH: Climb to 2000 direct LIQNI and hold.

ATIS <b>132.55</b>	ORLANDO APP CON <b>126.025 281.425</b>	MELBOURNE TOWER ★ <b>118.2 (CTAF) 257.8</b>	GND CON <b>121.9</b>	UNICOM <b>122.95</b>
-----------------------	---	--	-------------------------	-------------------------

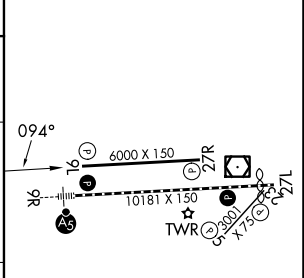


SE-3, 16 APR 2026 to 14 MAY 2026

SE-3, 16 APR 2026 to 14 MAY 2026



ELEV 33	TDZE 33
---------	---------



CATEGORY	A	B	C	D
LPV DA		283-3/4	250 (300-3/4)	
LNAV/VNAV DA		473-1 1/4	440 (500-1 1/4)	
LNAV MDA	480-1	447 (500-1)	480-1 3/8	447 (500-1 3/8)
CIRCLING	500-1 467 (500-1)	560-1 527 (600-1)	680-1 3/4 647 (700-1 3/4)	880-2 3/4 847 (900-2 3/4)

REIL Rwy 27L 1  
 HIRL Rwy 9R-27L 1  
 MIRL Rwys 5-23 and 9L-27R 1  
 TDZ/CL Rwy 9R 1