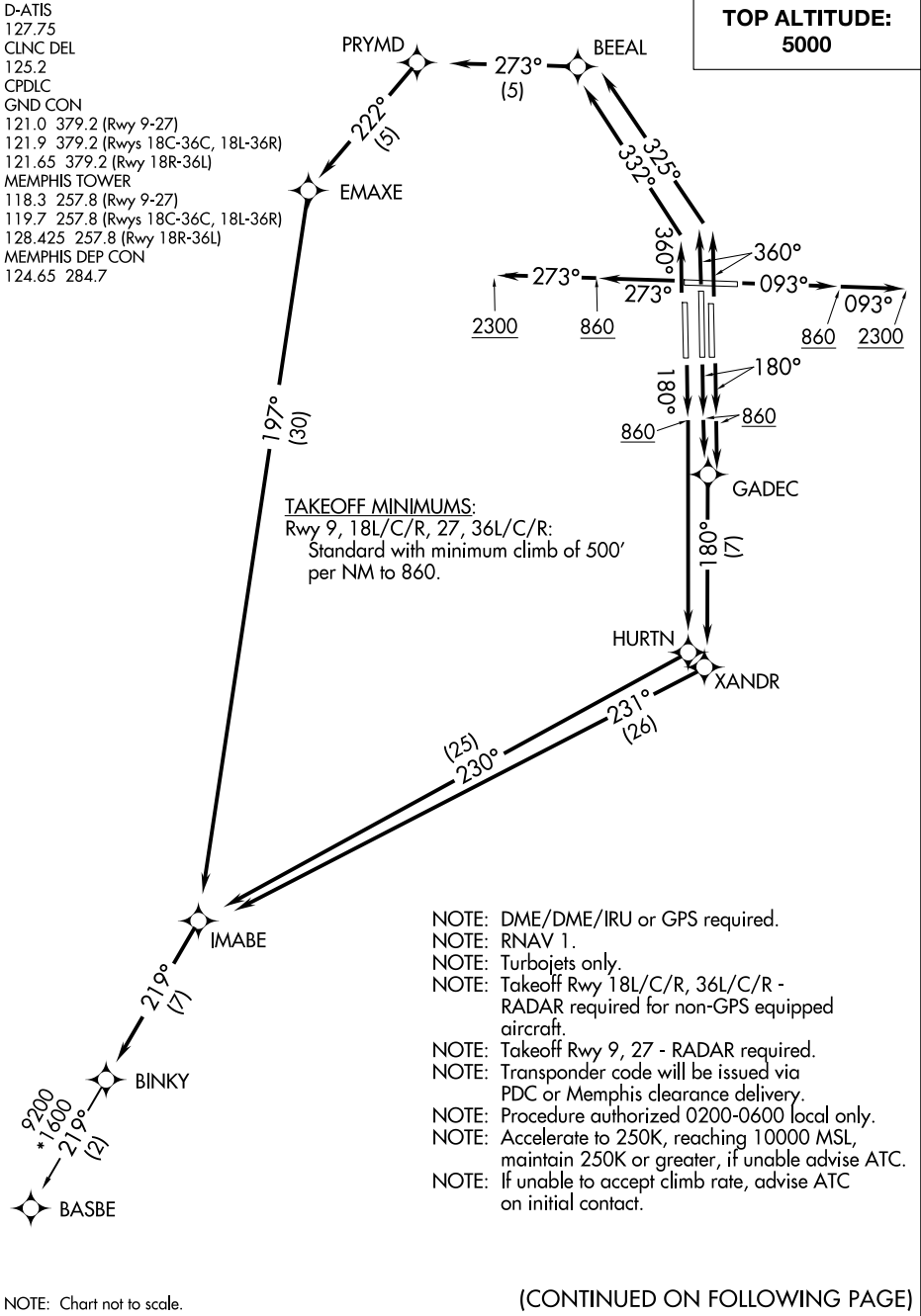


# BINKY SIX DEPARTURE (RNAV)

D-ATIS  
127.75  
CLNC DEL  
125.2  
CPDLC  
GND CON  
121.0 379.2 (Rwy 9-27)  
121.9 379.2 (Rwys 18C-36C, 18L-36R)  
121.65 379.2 (Rwy 18R-36L)  
MEMPHIS TOWER  
118.3 257.8 (Rwy 9-27)  
119.7 257.8 (Rwys 18C-36C, 18L-36R)  
128.425 257.8 (Rwy 18R-36L)  
MEMPHIS DEP CON  
124.65 284.7

**TOP ALTITUDE:  
5000**



**TAKEOFF MINIMUMS:**  
Rwy 9, 18L/C/R, 27, 36L/C/R:  
Standard with minimum climb of 500'  
per NM to 860.

- NOTE: DME/DME/IRU or GPS required.
- NOTE: RNAV 1.
- NOTE: Turbojets only.
- NOTE: Takeoff Rwy 18L/C/R, 36L/C/R - RADAR required for non-GPS equipped aircraft.
- NOTE: Takeoff Rwy 9, 27 - RADAR required.
- NOTE: Transponder code will be issued via PDC or Memphis clearance delivery.
- NOTE: Procedure authorized 0200-0600 local only.
- NOTE: Accelerate to 250K, reaching 10000 MSL, maintain 250K or greater, if unable advise ATC.
- NOTE: If unable to accept climb rate, advise ATC on initial contact.

NOTE: Chart not to scale.

(CONTINUED ON FOLLOWING PAGE)

SE-1, 16 APR 2026 to 14 MAY 2026

SE-1, 16 APR 2026 to 14 MAY 2026



DEPARTURE ROUTE DESCRIPTION

TAKEOFF RUNWAY 9: Climb on heading 093° to 860, then continue climb to 2300 on heading 093° or as assigned by ATC, for vectors to IMABE, then on depicted route to BINKY, thence....

TAKEOFF RUNWAYS 18L/C: Climb on heading 180° to 860, then direct GADEC, then on depicted route to BINKY, thence....

TAKEOFF RUNWAY 18R: Climb on heading 180° to 860, then direct HURTN, then on depicted route to BINKY, thence....

TAKEOFF RUNWAY 27: Climb on heading 273° to 860, then continue climb to 2300 on heading 273° or as assigned by ATC for vectors to IMABE, then on depicted route to BINKY, thence....

TAKEOFF RUNWAY 36L: Climb on heading 360° to intercept course 332° to BEEAL, then on depicted route to BINKY, thence....

TAKEOFF RUNWAYS 36C/R: Climb on heading 360° to intercept course 325° to BEEAL, then on depicted route to BINKY, thence....

....maintain 5000. Expect clearance to filed altitude within ten (10) minutes after departure.

BASBE TRANSITION (BINKY6.BASBE):

SE-1, 16 APR 2026 to 14 MAY 2026

SE-1, 16 APR 2026 to 14 MAY 2026