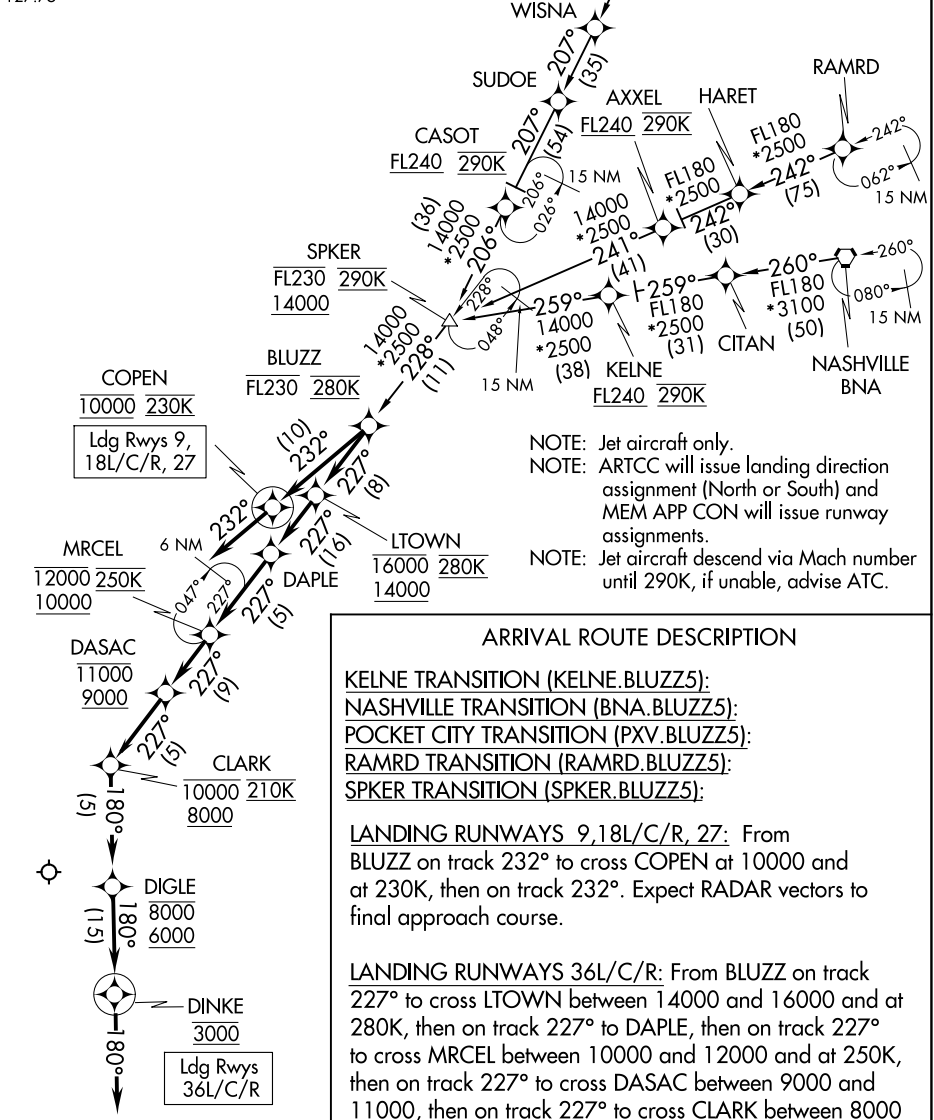


BLUZZ FIVE ARRIVAL (RNAV)

MEMPHIS APP CON
119.1 291.6 (176°-355°)
125.8 338.3 (356°-175°)
D-ATIS
127.75

RNAV 1 - DME/DME/IRU or GPS.
RADAR required.



- NOTE: Jet aircraft only.
- NOTE: ARTCC will issue landing direction assignment (North or South) and MEM APP CON will issue runway assignments.
- NOTE: Jet aircraft descend via Mach number until 290K, if unable, advise ATC.

ARRIVAL ROUTE DESCRIPTION

- KELNE TRANSITION (KELNE.BLUZZ5):
- NASHVILLE TRANSITION (BNA.BLUZZ5):
- POCKET CITY TRANSITION (PXV.BLUZZ5):
- RAMRD TRANSITION (RAMRD.BLUZZ5):
- SPKER TRANSITION (SPKER.BLUZZ5):

LANDING RUNWAYS 9,18L/C/R, 27: From BLUZZ on track 232° to cross COPEN at 10000 and at 230K, then on track 232°. Expect RADAR vectors to final approach course.

LANDING RUNWAYS 36L/C/R: From BLUZZ on track 227° to cross LTOWN between 14000 and 16000 and at 280K, then on track 227° to DAPLE, then on track 227° to cross MRCEL between 10000 and 12000 and at 250K, then on track 227° to cross DASAC between 9000 and 11000, then on track 227° to cross CLARK between 8000 and 10000 and at 210K, then on track 180° to cross DIGLE between 6000 and 8000, then on track 180° to cross DINKE at 3000, then on track 180°. Expect RADAR vectors to final approach course.

NOTE: Chart not to scale.

SE-1, 16 APR 2026 to 14 MAY 2026

SE-1, 16 APR 2026 to 14 MAY 2026