

# CONDR FOUR ARRIVAL (RNAV)

SE-1, 16 APR 2026 to 14 MAY 2026

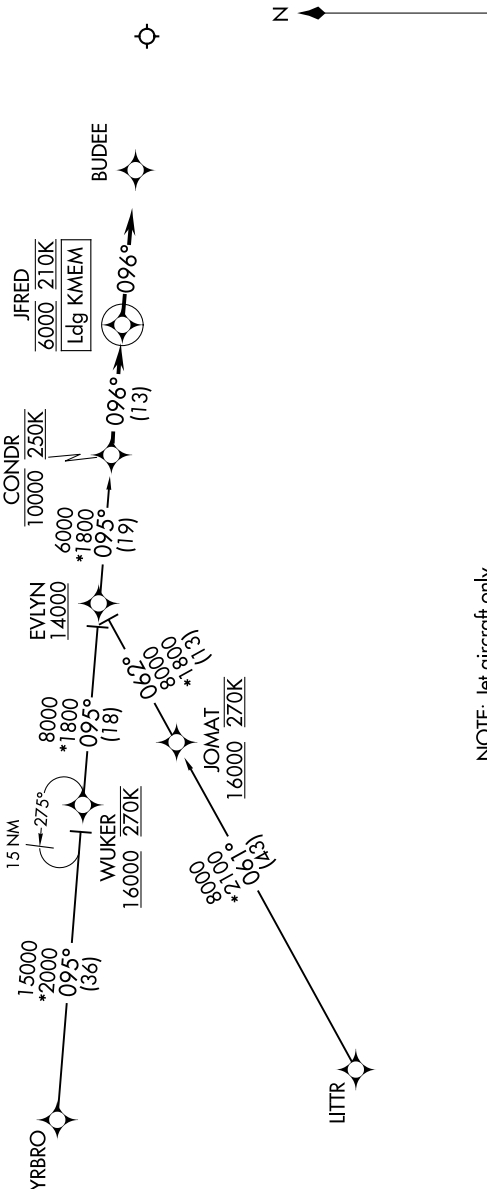
**ARRIVAL ROUTE DESCRIPTION**

EVLYN TRANSITION (EVLYN.CONDR4):  
LITTR TRANSITION (LITTR.CONDR4):  
YRBRO TRANSITION (YRBRO.CONDR4):

From CONDR on track 096° to cross JFRED at 6000 and at 210K, then on track 096°. Expect RADAR vectors to final approach course.

RNAV 1 - DME/DME/IRU or GPS.  
 RADAR required.

MEMPHIS APP CON  
 119.1 291.6 (176°-355°)  
 125.8 338.3 (356°-175°)  
 D-ATIS  
 127.75



NOTE: Jet aircraft only.  
 NOTE: Do not file - to be assigned by ATC.

NOTE: Chart not to scale.

SE-1, 16 APR 2026 to 14 MAY 2026