

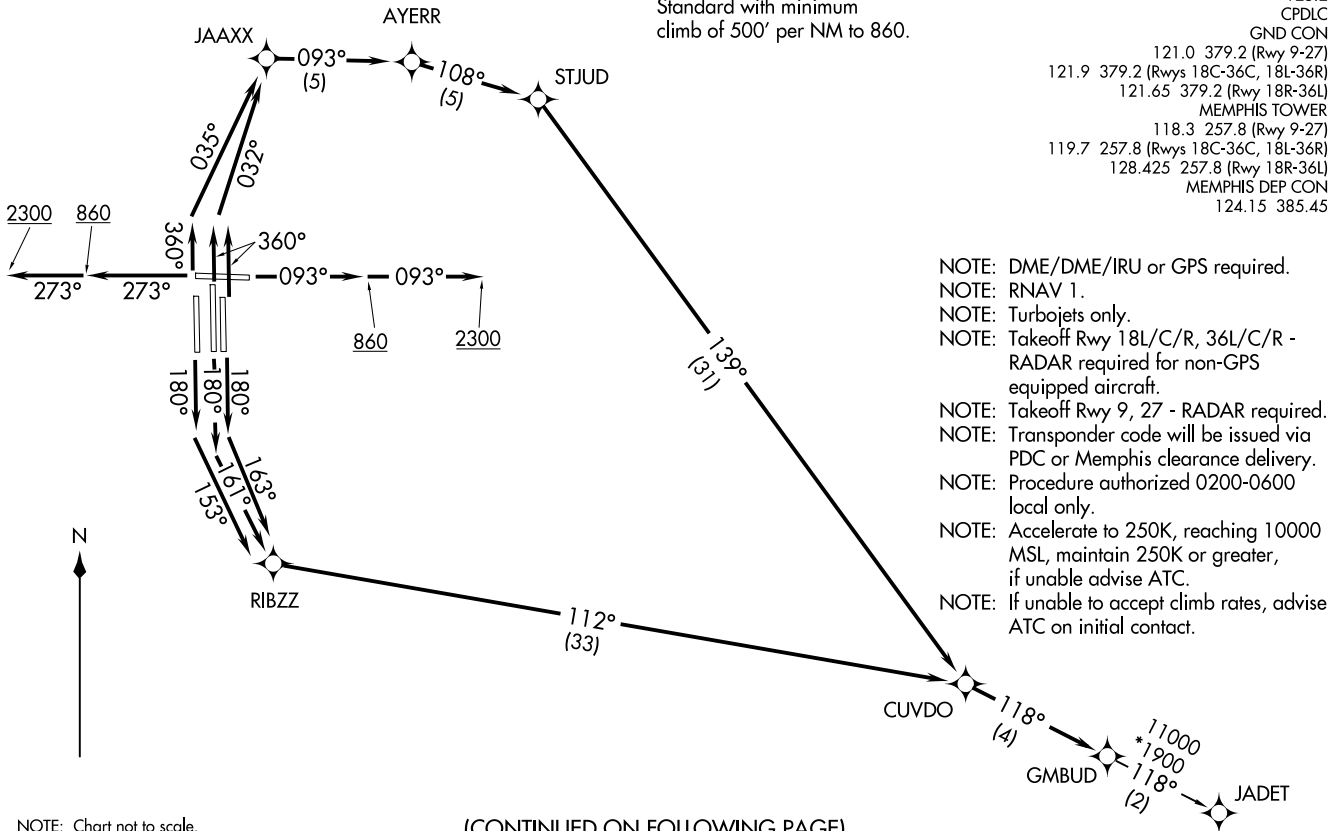
GMBUD SEVEN DEPARTURE (RNAV)
(GMBUD7.GMBUD) 31 DEC 20

FREDERICK W SMITH INTL/MEMPHIS (OEDM)
MEMPHIS, TENNESSEE

TOP ALTITUDE:
5000

TAKEOFF MINIMUMS:
Rwy 9, 18L/C/R, 27, 36L/C/R:
Standard with minimum
climb of 500' per NM to 860.

D-ATIS 127.75
 CLNC DEL 125.2
 CPDLC
 GND CON
 121.0 379.2 (Rwy 9-27)
 121.9 379.2 (Rwys 18C-36C, 18L-36R)
 121.65 379.2 (Rwy 18R-36L)
 MEMPHIS TOWER
 118.3 257.8 (Rwy 9-27)
 119.7 257.8 (Rwys 18C-36C, 18L-36R)
 128.425 257.8 (Rwy 18R-36L)
 MEMPHIS DEP CON
 124.15 385.45



NOTE: Chart not to scale.

(CONTINUED ON FOLLOWING PAGE)

(GMBUD7.GMBUD) 26078
GMBUD SEVEN DEPARTURE (RNAV)

AL-253 (FAA)
FREDERICK W SMITH INTL/MEMPHIS (OEDM)
MEMPHIS, TENNESSEE



DEPARTURE ROUTE DESCRIPTION

TAKEOFF RUNWAY 9: Climb on heading 093° to 860, then continue climb to 2300 on heading 093° or as assigned by ATC, for RADAR vectors to CUVDO, then on depicted route to GMBUD, thence....

TAKEOFF RUNWAY 18C: Climb on heading 180° to intercept course 161° to RIBZZ, then on depicted route to GMBUD, thence....

TAKEOFF RUNWAY 18L: Climb on heading 180° to intercept course 163° to RIBZZ, then on depicted route to GMBUD, thence....

TAKEOFF RUNWAY 18R: Climb on heading 180° to intercept course 153° to RIBZZ, then on depicted route to GMBUD, thence....

TAKEOFF RUNWAY 27: Climb on heading 273° to 860, then continue climb to 2300 on heading 273° or as assigned by ATC, for RADAR vectors to cross CUVDO, then on depicted route to GMBUD, thence....

TAKEOFF RUNWAY 36L: Climb on heading 360° to intercept course 035° to JAAXX, then on depicted route to GMBUD, thence....

TAKEOFF RUNWAYS 36C/R: Climb on heading 360° to intercept course 032° to JAAXX, then on depicted route to GMBUD, thence....

....maintain 5000. Expect clearance to filed altitude within ten (10) minutes after departure.

JADET TRANSITION (GMBUD7.JADET):

SE-1, 16 APR 2026 to 14 MAY 2026

SE-1, 16 APR 2026 to 14 MAY 2026