

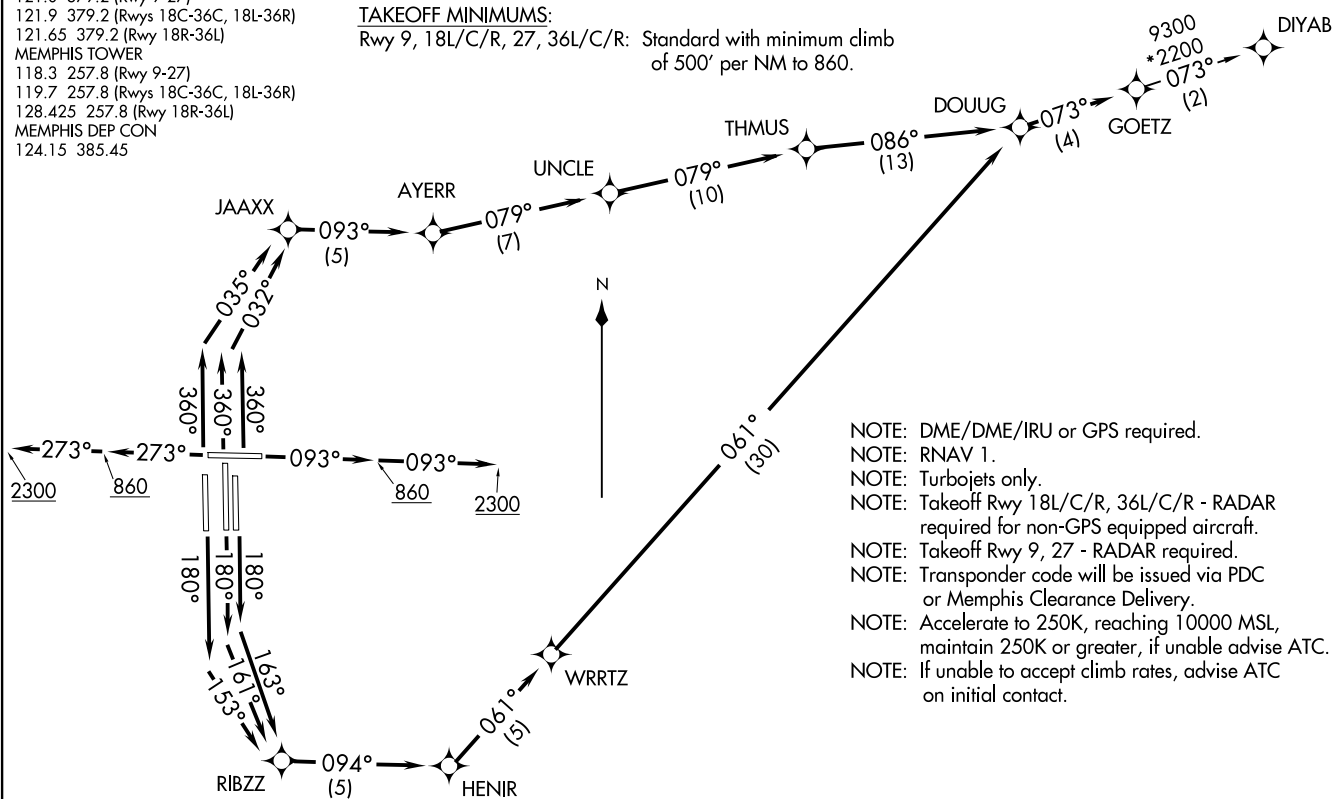
**TOP ALTITUDE:
5000**

TAKEOFF MINIMUMS:
Rwy 9, 18L/C/R, 27, 36L/C/R: Standard with minimum climb of 500' per NM to 860.

D-ATIS 127.75
CLNC DEL 125.2
CPDLC
GND CON
121.0 379.2 (Rwy 9-27)
121.9 379.2 (Rwys 18C-36C, 18L-36R)
121.65 379.2 (Rwy 18R-36L)
MEMPHIS TOWER
118.3 257.8 (Rwy 9-27)
119.7 257.8 (Rwys 18C-36C, 18L-36R)
128.425 257.8 (Rwy 18R-36L)
MEMPHIS DEP CON
124.15 385.45

(GOETZ) GOETZ SEVEN DEPARTURE (RNAV) (GOETZZ.GOEITZ) 26078
MEMPHIS, TENNESSEE
FREDERICK W SMITH INTL/MEMPHIS (MEM)

(GOETZZ.GOEITZ) 26078
AL-253 (FAA)
FREDERICK W SMITH INTL/MEMPHIS (MEM)
MEMPHIS, TENNESSEE



- NOTE: DME/DME/IRU or GPS required.
- NOTE: RNAV 1.
- NOTE: Turbojets only.
- NOTE: Takeoff Rwy 18L/C/R, 36L/C/R - RADAR required for non-GPS equipped aircraft.
- NOTE: Takeoff Rwy 9, 27 - RADAR required.
- NOTE: Transponder code will be issued via PDC or Memphis Clearance Delivery.
- NOTE: Accelerate to 250K, reaching 10000 MSL, maintain 250K or greater, if unable advise ATC.
- NOTE: If unable to accept climb rates, advise ATC on initial contact.

(CONTINUED ON FOLLOWING PAGE)

NOTE: Chart not to scale.

GOETZ SEVEN DEPARTURE (RNAV)



DEPARTURE ROUTE DESCRIPTION

TAKEOFF RUNWAY 9: Climb on heading 093° to 860, then continue climb to 2300 on heading 093° or as assigned by ATC, for RADAR vectors to DOUUG, then on depicted route to GOETZ, thence

TAKEOFF RUNWAY 18C: Climb on heading 180° to intercept course 161° to RIBZZ, then on depicted route to GOETZ, thence

TAKEOFF RUNWAY 18L: Climb on heading 180° to intercept course 163° to RIBZZ, then on depicted route to GOETZ, thence

TAKEOFF RUNWAY 18R: Climb on heading 180° to intercept course 153° to RIBZZ, then on depicted route to GOETZ, thence

TAKEOFF RUNWAY 27: Climb on heading 273° to 860, then continue climb to 2300 on heading 273° or as assigned by ATC, for RADAR vectors to DOUUG, then on depicted route to GOETZ, thence

TAKEOFF RUNWAY 36L: Climb on heading 360° to intercept course 035° to JAAXX, then on depicted route to GOETZ, thence

TAKEOFF RUNWAYS 36C/R: Climb on heading 360° to intercept course 032° to JAAXX, then on depicted route to GOETZ, thence

. . . . maintain 5000. Expect clearance to filed altitude within ten (10) minutes after departure.

DIYAB TRANSITION (GOETZ7.DIYAB)

SE-1, 16 APR 2026 to 14 MAY 2026

SE-1, 16 APR 2026 to 14 MAY 2026