

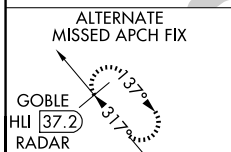
LOC/DME I-TSE <b>110.5</b> Chan <b>42</b>	APP CRS <b>360°</b>	Rwy Ldg <b>10715</b> TDZE <b>341</b> Apt Elev <b>341</b>
---	------------------------	--

# ILS RWY 36C (CAT II & III)

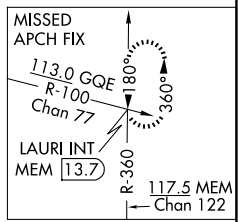
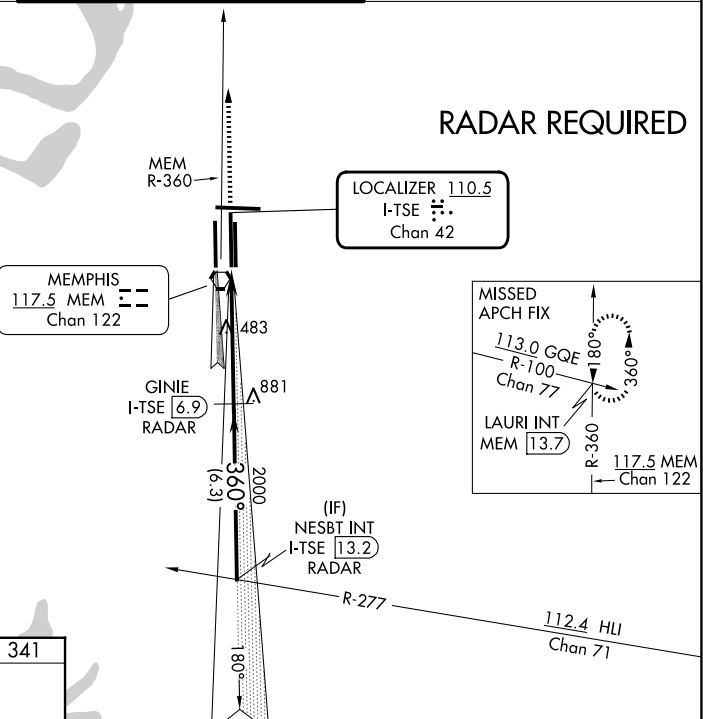
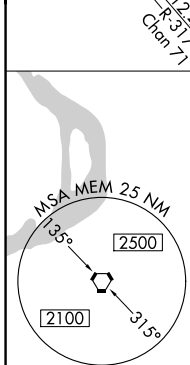
FREDERICK W SMITH INTL/MEMPHIS (MEM)

MEMPHIS APP CON <b>119.1 291.6</b> (176°-355°) <b>125.8 338.3</b> (356°-175°)	MEMPHIS TOWER (Rwy 9-27) <b>118.3 257.8</b> (Rwys 18C-36C, 18L-36R) <b>119.7 257.8</b> (Rwy 18R-36L) <b>128.425 257.8</b>	GND CON (Rwy 9-27) <b>121.0 379.2</b> (Rwys 18C-36C, 18L-36R) <b>121.9 379.2</b> (Rwy 18R-36L) <b>121.65 379.2</b>
---	--	---

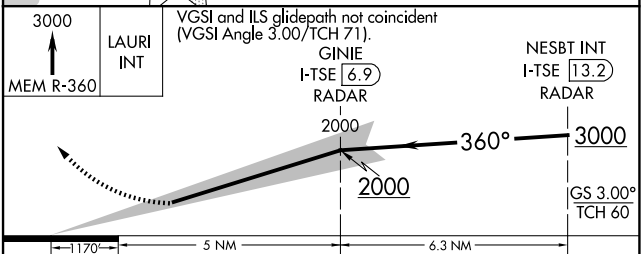
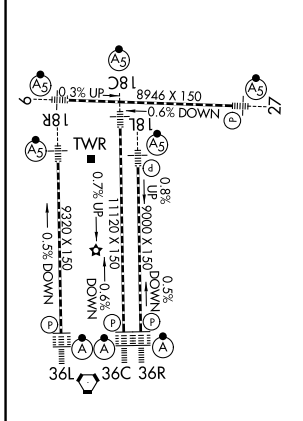
D-ATIS  
**127.75**



**RADAR REQUIRED**



ELEV <b>341</b>	<b>D</b>	TDZE <b>341</b>
-----------------	----------	-----------------



CATEGORY	A	B	C	D
S-ILS 36C	CAT II RA 118/12 100 DA 441			
S-ILS 36C	CAT IIIa		RVR 07	
S-ILS 36C	CAT IIIb		RVR 03	
S-ILS 36C	CAT IIIc		NA	

## CATEGORY II & III ILS - SPECIAL AIRCREW & AIRCRAFT CERTIFICATION REQUIRED

TDZL/RCLS Rwys 18L, 18C, 18R, 36R, 36C, and 36L  
HIRL all rwys