

LOC/DME I-OHN 108.9 Chan 26	APP CRS 360°	Rwy Ldg 9320 TDZE 321 Apt Elev 341
--	------------------------	---

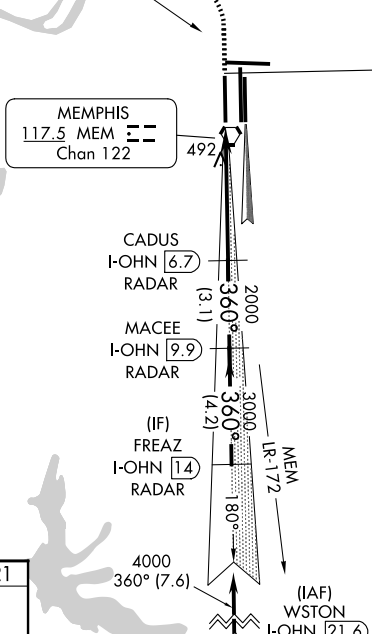
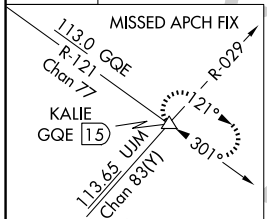
ILS RWY 36L (CAT II & III)
FREDERICK W SMITH INTL/MEMPHIS (MEM)

Simultaneous approach authorized with Rwy 36C/R.
DME or RADAR required.

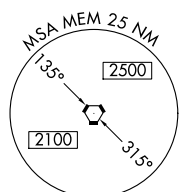
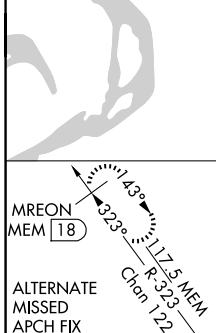
ALS-F-2
MISSED APPROACH: Climb to 1000 then climbing left turn to 5000 via heading 330° and GQE VOR/DME R-121 to KALIE INT/GQE 15 DME and hold, continue climb-in-hold to 5000.

MEMPHIS APP CON 119.1 291.6 (176°-355°) 125.8 338.3 (356°-175°)	MEMPHIS TOWER (Rwy 9-27) 118.3 257.8 (Rwys 18C-36C, 18L-36R) 119.7 257.8 (Rwy 18R-36L) 128.425 257.8	GND CON (Rwy 9-27) 121.0 379.2 (Rwys 18C-36C, 18L-36R) 121.9 379.2 (Rwy 18R-36L) 121.65 379.2
---	--	---

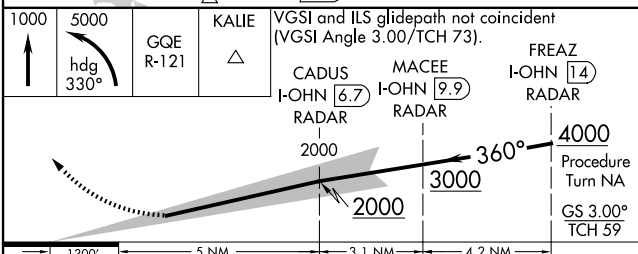
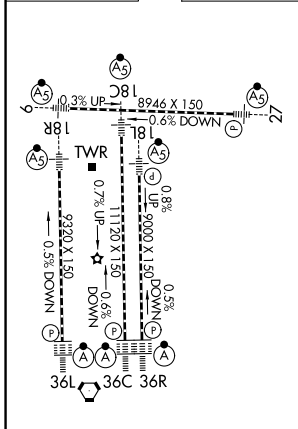
D-ATIS 127.75	113.0 GQE Chan 77	R-121
-------------------------	-------------------	-------



LOCALIZER 108.9
I-OHN
Chan 26



ELEV 341	D TDZE 321
----------	-------------------



CATEGORY	A	B	C	D
S-ILS 36L	CAT II RA 100/12 100 DA 421			
S-ILS 36L	CAT IIIa RVR 07			
S-ILS 36L	CAT IIIb RVR 03			
S-ILS 36L	CAT IIIc NA			

CATEGORY II & III ILS - SPECIAL AIRCREW & AIRCRAFT CERTIFICATION REQUIRED

SE-1, 16 APR 2026 to 14 MAY 2026

SE-1, 16 APR 2026 to 14 MAY 2026