

LOC/DME I-EXS 111.15 Chan 48(Y)	APP CRS 180°	Rwy Ldg 9000
		TDZE 301
		Apt Elev 341

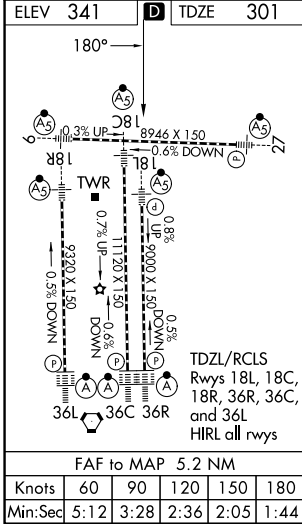
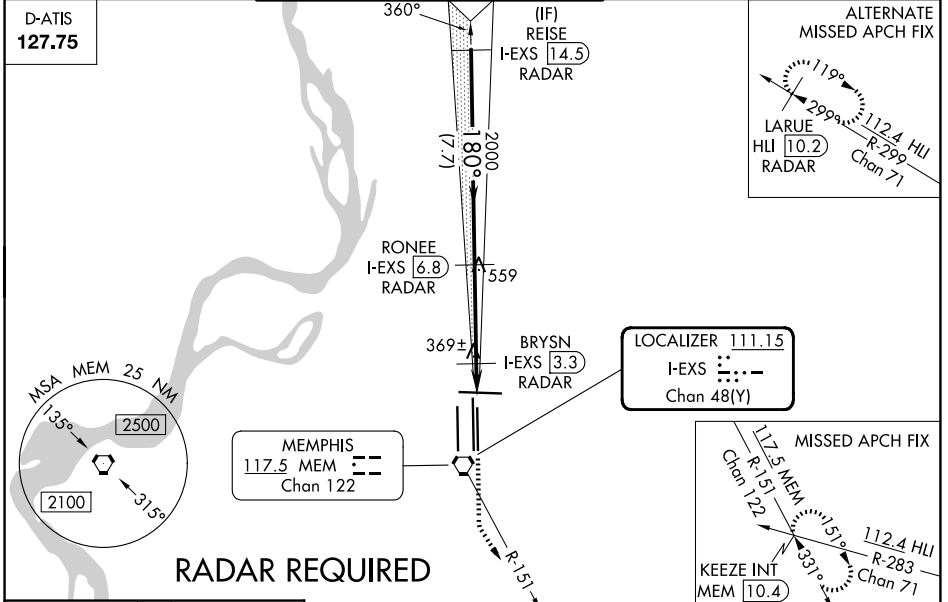
ILS or LOC RWY 18L

FREDERICK W SMITH INTL/MEMPHIS (MEM)

Simultaneous approach authorized. DME or RADAR required.
For inop ALS, increase S-ILS 18L Cat E visibility to RVR 4000, S-LOC 18L Cat E visibility to 1 3/4 SM, BRYSN fix minimums, increase S-LOC 18L Cats D and E visibility to RVR 5000.

MALS/R
MISSED APPROACH: Climb to 900 then climbing left turn to 5000 on MEM VORTAC R-151 to KEEZE INT/MEM 10.4 DME and hold, continue climb-in-hold to 5000.

MEMPHIS APP CON 119.1 291.6 (176°-355°) 125.8 338.3 (356°-175°)	MEMPHIS TOWER (Rwy 9-27) 118.3 257.8 (Rwys 18C-36C, 18L-36R) 119.7 257.8 (Rwy 18R-36L) 128.425 257.8	GND CON (Rwy 9-27) 121.0 379.2 (Rwys 18C-36C, 18L-36R) 121.9 379.2 (Rwy 18R-36L) 121.65 379.2
---	--	---



VGSI and ILS glidepath not coincident (VGSI Angle 3.00/TCH 73).

REISE I-EXS 14.5 RADAR	RONEE I-EXS 6.8 RADAR	BRYSN I-EXS 3.3 RADAR	I-EXS 2.5	I-EXS 1.7	
900	5000	MEM R-151	KEEZE INT	*LOC only.	
3000	2000	*820			
GS 3.00° TCH 60	7.7 NM	3.5 NM	0.8 NM	0.9 NM	
CATEGORY	A	B	C	D	E
S-ILS 18L	501/18 200 (200-1/2)				501/24 200 (200-1/2)
S-LOC 18L	820/24	519 (500-1/2)	820/50 519 (500-1)	820/60	519 (500-1/4)
CIRCLING	940-1	599 (600-1)	940-1 1/2 599 (600-1 1/2)	1020-2 1/4 679 (700-2 1/4)	1140-2 3/4 799 (800-2 3/4)
BRYSN FIX MINIMUMS					
S-LOC 18L	620/24	319 (300-1/2)	620/40	319 (300-3/4)	
CIRCLING	940-1	599 (600-1)	940-1 1/2 599 (600-1 1/2)	1020-2 1/4 679 (700-2 1/4)	1140-2 3/4 799 (800-2 3/4)

SE-1, 16 APR 2026 to 14 MAY 2026

SE-1, 16 APR 2026 to 14 MAY 2026