

LOC I-MEM <b>109.5</b>	APP CRS <b>093°</b>	Rwy Ldg TDZE Apt Elev	<b>8946</b> <b>259</b> <b>341</b>
---------------------------	------------------------	-----------------------------	---

**ILS or LOC RWY 9**  
FREDERICK W SMITH INTL/MEMPHIS (MEM)

▼ For inop ALS, increase S-ILS 9 Cat E visibility to RVR 4000 and S-LOC 9 Cat E visibility to 1¾ SM.  
▲

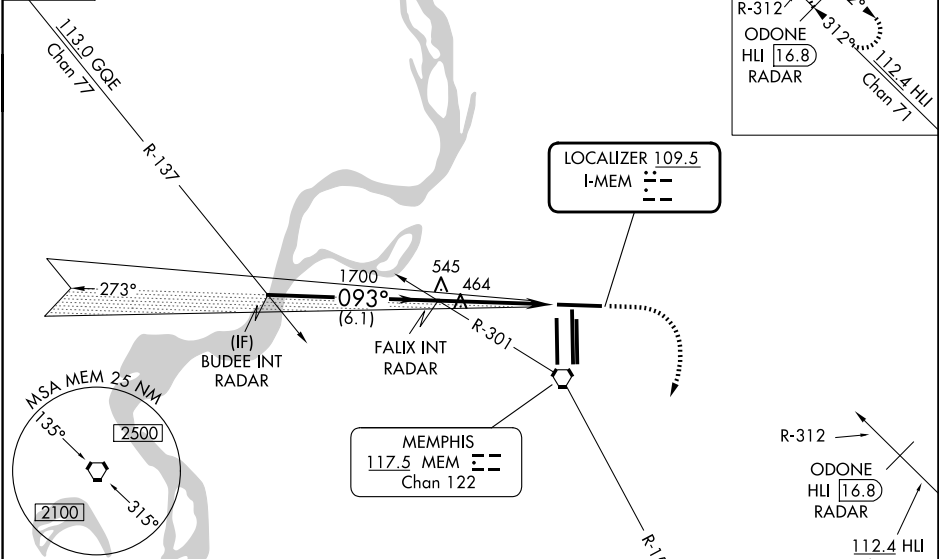
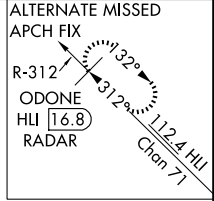


MISSED APPROACH: Climb to 1000 then climbing right turn to 5000 on MEM R-151 to KEEZE INT/MEM 10.4 DME and hold, continue climb-in-hold to 5000.

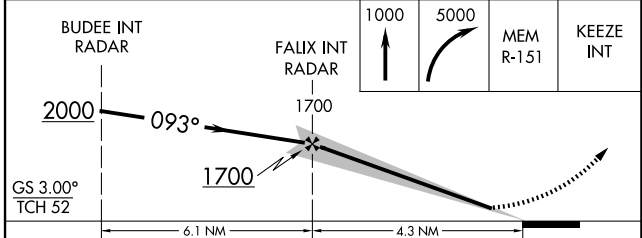
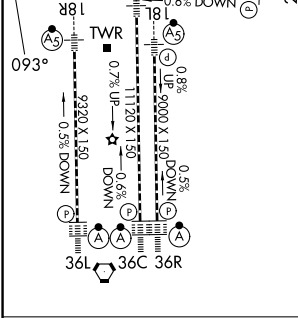
MEMPHIS APP CON	MEMPHIS TOWER	GND CON
<b>119.1 291.6</b> (176°-355°)	(Rwy 9-27) <b>118.3 257.8</b>	(Rwy 9-27) <b>121.0 379.2</b>
<b>125.8 338.3</b> (356°-175°)	(Rwys 18C-36C, 18L-36R) <b>119.7 257.8</b>	(Rwys 18C-36C, 18L-36R) <b>121.9 379.2</b>
	(Rwy 18R-36L) <b>128.425 257.8</b>	(Rwy 18R-36L) <b>121.65 379.2</b>

D-ATIS  
**127.75**

**RADAR REQUIRED**



ELEV 341	<b>D</b>	TDZE 259
TDZL/RCLS Rwys 18L, 18C, 18R, 36R, 36C, and 36L HIRL all rwys		



CATEGORY	A	B	C	D	E
S-ILS 9	466/24 207 (200-½)				
S-LOC 9	720/24 461 (400-½)	720/50 461 (400-1)	720/60 461 (400-1½)		
CIRCLING	940-1 599 (600-1)	940-1½ 599 (600-1½)	1020-2¼ 679 (700-2¼)	1140-2¾ 799 (800-2¾)	

FAF to MAP 4.3 NM					
Knots	60	90	120	150	180
Min:Sec	4:18	2:52	2:09	1:43	1:26

SE-1, 16 APR 2026 to 14 MAY 2026

SE-1, 16 APR 2026 to 14 MAY 2026