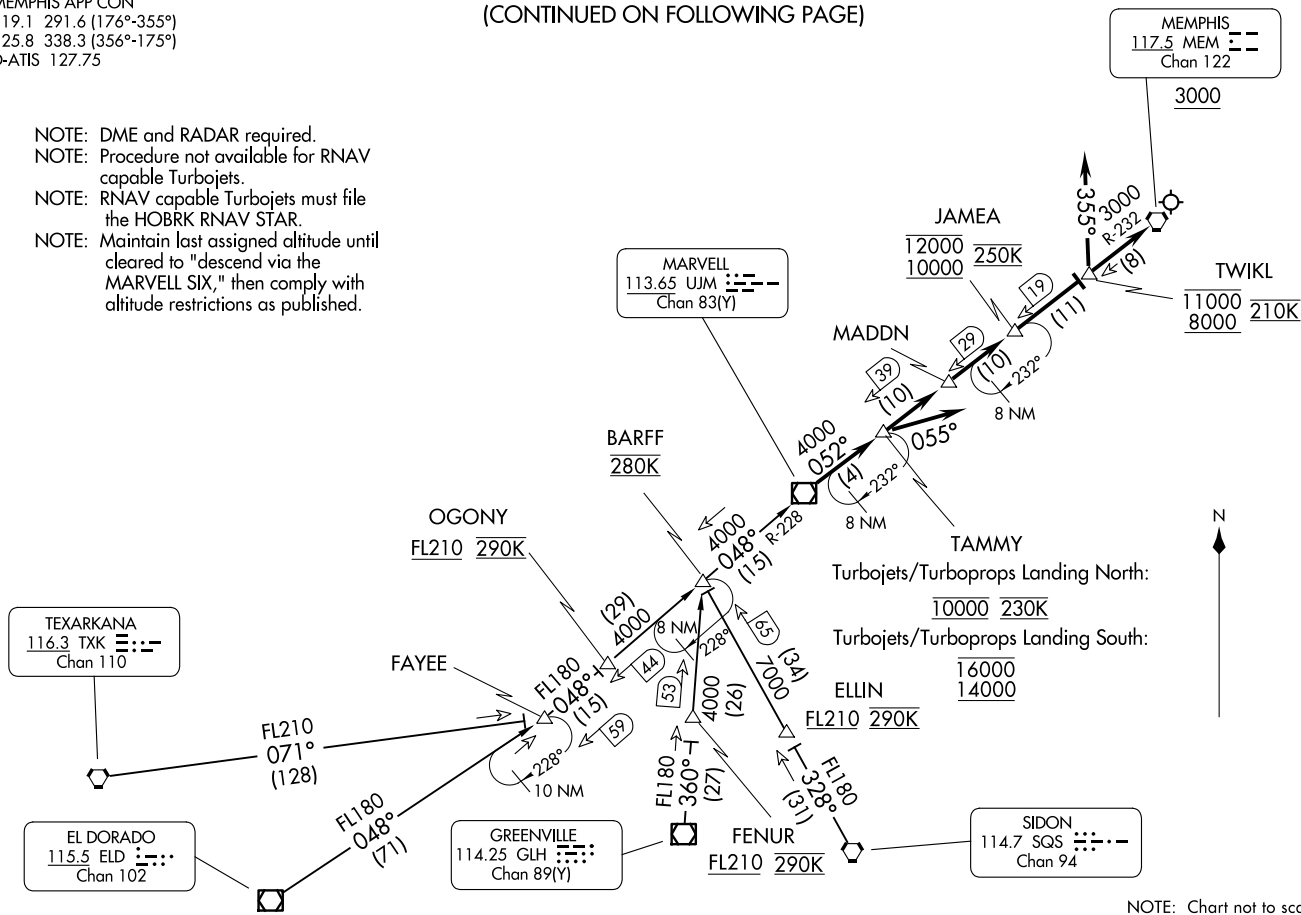


(CONTINUED ON FOLLOWING PAGE)

MEMPHIS APP CON  
119.1 291.6 (176°-355°)  
125.8 338.3 (356°-175°)  
D-ATIS 127.75

- NOTE: DME and RADAR required.
- NOTE: Procedure not available for RNAV capable Turbojets.
- NOTE: RNAV capable Turbojets must file the HOBKR RNAV STAR.
- NOTE: Maintain last assigned altitude until cleared to "descend via the MARVELL SIX," then comply with altitude restrictions as published.



NOTE: Chart not to scale.

MARVELL SIX ARRIVAL  
(UJM, UJM6) 10NOV16

FREDERICK W SMITH INTL/MEMPHIS (MEM)  
MEMPHIS, TENNESSEE

(UJM, UJM6) 26078  
MARVELL SIX ARRIVAL

AL-253 (FAA)  
FREDERICK W SMITH INTL/MEMPHIS (MEM)  
MEMPHIS, TENNESSEE

ARRIVAL ROUTE DESCRIPTION

EL DORADO TRANSITION (ELD.UJM6): From over ELD VOR/DME on ELD R-048 to FAYEE, then on UJM R-228 to UJM VOR/DME. Thence. . . .

GREENVILLE TRANSITION (GLH.UJM6): From over GLH VOR/DME on GLH R-360 to BARFF, then on UJM R-228 to UJM VOR/DME. Thence. . . .

SIDON TRANSITION (SQS.UJM6): From over SQS VORTAC on SQS R-328 to BARFF, then on UJM R-228 to UJM VOR/DME. Thence. . . .

TEXARKANA TRANSITION (TXK.UJM6): From over TXK VORTAC on TXK R-071 to FAYEE, then on UJM R-228 to UJM VOR/DME. Thence. . . .

TURBOJETS/TURBOPROPS LANDING SOUTH: From over UJM VOR/DME on MEM VORTAC R-232 to cross TAMMY/MEM 39 DME at or above 14000 and at or below 16000, then on MEM VORTAC R-232 to MADDN/MEM 29 DME, then on MEM VORTAC R-232 to JAMEA/MEM 19 DME at or above 10000 and at or below 12000 at 250K, then on MEM VORTAC R-232 to cross TWIKL/ MEM 8 DME at or above 8000 and at or below 11000 and at 210K, then on heading 355°, expect radar vectors to final approach course.

TURBOJETS/TURBOPROPS LANDING NORTH: From over UJM VOR/DME on MEM VORTAC R-232 to cross TAMMY/MEM 39 DME at 10000 and at 230K, then on heading 055, expect radar vectors to final approach course.

NON-TURBINE AIRCRAFT ALL RUNWAYS: From over UJM VOR/DME on MEM VORTAC R-232 to cross MEM VORTAC at or above 3000, expect radar vectors to final approach course after passing TAMMY/MEM 39 DME.

SE-1, 16 APR 2026 to 14 MAY 2026

SE-1, 16 APR 2026 to 14 MAY 2026