

WAAS CH <b>40407</b> <b>W36B</b>	APP CRS <b>360°</b>	Rwy Ldg TDZE <b>341</b> Apt Elev <b>341</b>	<b>10715</b>
--	------------------------	---	--------------

# RNAV (GPS) RWY 36C

FREDERICK W SMITH INTL/MEMPHIS (MEM)

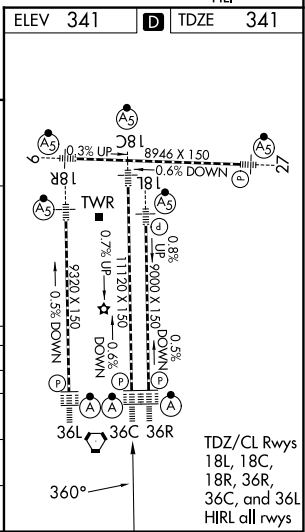
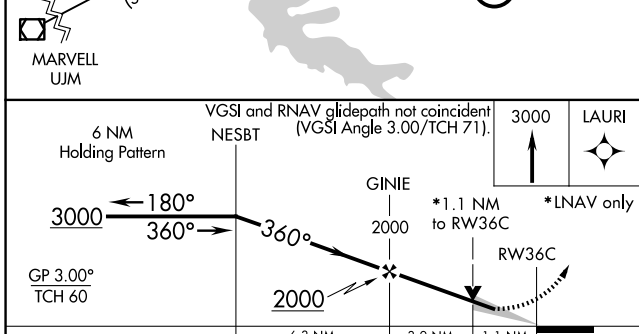
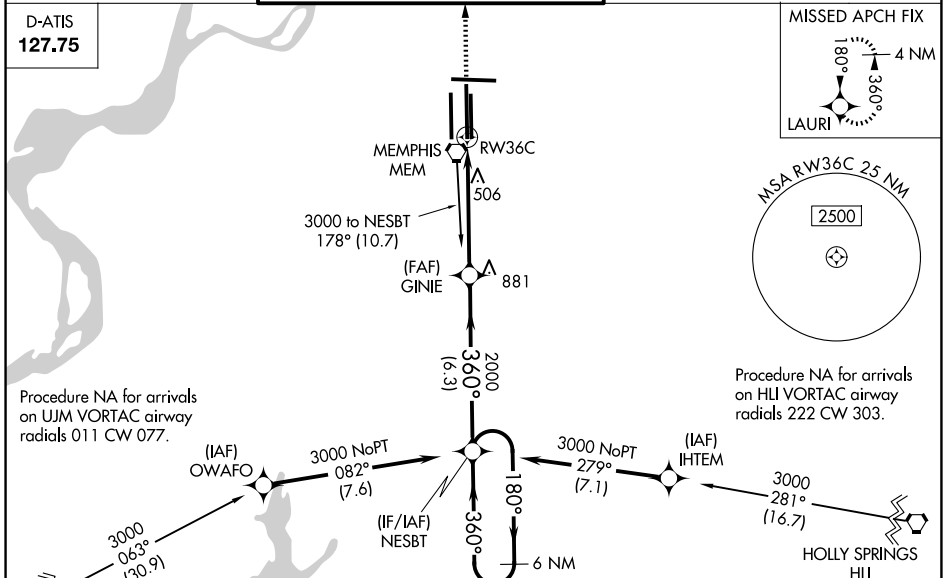
**RNP APCH.**

▼ For uncompensated Baro-VNAV systems, LNAV/VNAV NA below -15°C or above 54°C. Simultaneous approach authorized. For inop ALS increase LPV all Cats visibility to RVR 5000, increase LNAV Cat D visibility to RVR 6000. LNAV procedure NA during simultaneous operations. Use of FD or AP required during simultaneous operations.

ALS-2

MISSED APPROACH: Climb to 3000 direct LAURI and hold.

MEMPHIS APP CON <b>119.1 291.6</b> (176°-355°) <b>125.8 338.3</b> (356°-175°)	MEMPHIS TOWER (Rwy 9-27) <b>118.3 257.8</b> (Rwys 18C-36C, 18L-36R) <b>119.7 257.8</b> (Rwy 18R-36L) <b>128.425 257.8</b>	GND CON (Rwy 9-27) <b>121.0 379.2</b> (Rwys 18C-36C, 18L-36R) <b>121.9 379.2</b> (Rwy 18R-36L) <b>121.65 379.2</b>
---	--	---



CATEGORY	A	B	C	D
LPV DA		665/24	324 (400-½)	
LNAV/VNAV DA		765/50	424 (500-1)	
LNAV MDA	760/24	419 (500-½)	760/40 419 (500-¾)	760/50 419 (500-1)
CIRCLING	940-1	599 (600-1)	940-1½ 599 (600-1½)	1020-2¼ 679 (700-2¼)

SE-1, 16 APR 2026 to 14 MAY 2026

SE-1, 16 APR 2026 to 14 MAY 2026