

WAAS CH <b>65907</b> <b>W36A</b>	APP CRS <b>360°</b>	Rwy Ldg TDZE Apt Elev	<b>9320</b> <b>321</b> <b>341</b>
--	------------------------	-----------------------------	---

# RNAV (GPS) RWY 36L

FREDERICK W SMITH INTL/MEMPHIS(MEM)

**⚠** For uncompensated Baro-VNAV systems, LNAV/VNAV NA below -15°C (5°F) or above 48°C (118°F). Simultaneous approach authorized. DME/DME RNP-0.3 NA. LNAV procedure NA during simultaneous operations. Use of FD or AP required during simultaneous operations.

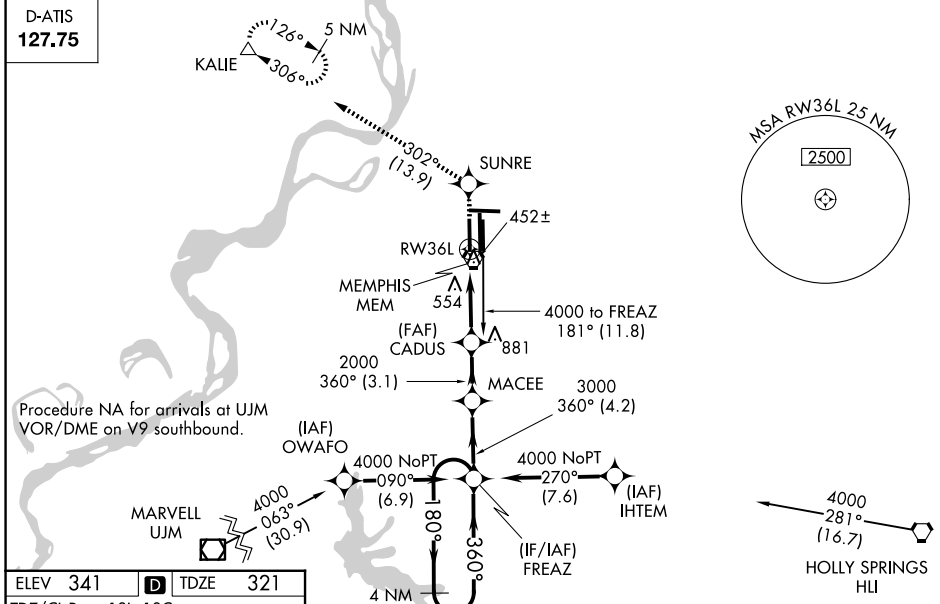
ALSF-2



**MISSED APPROACH:** Climb to 5000 direct SUNRE and on track 302° to KALIE and hold, continue climb-in-hold to 5000.

MEMPHIS APP CON	MEMPHIS TOWER	GND CON
<b>119.1 291.6</b> (176°-355°)	(Rwy 9-27) <b>118.3 257.8</b>	(Rwy 9-27) <b>121.0 379.2</b>
<b>125.8 338.3</b> (356°-175°)	(Rwys 18C-36C, 18L-36R) <b>119.7 257.8</b>	(Rwys 18C-36C, 18L-36R) <b>121.9 379.2</b>
	(Rwy 18R-36L) <b>128.425 257.8</b>	(Rwy 18R-36L) <b>121.65 379.2</b>

D-ATIS  
**127.75**

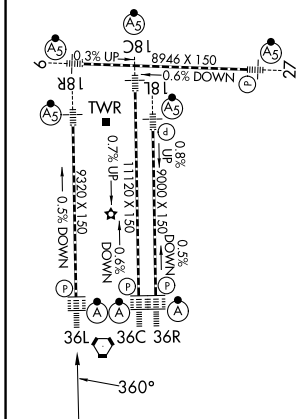


Procedure NA for arrivals at UJM VOR/DME on V9 southbound.

Procedure NA for arrival on HLI VORTAC airway radials 222 CW 303.

ELEV 341	<b>D</b>	TDZE 321
----------	----------	----------

TDZ/CL Rwys 18L, 18C, 18R, 36R, 36C, and 36L  
HIRL all rwys



5000	SUNRE	tr 302°	KALIE	FREQZ	4 NM Holding Pattern
*LNAV only.					
RW36L		*1.2 NM to RW36L	CADUS 2000	MACCEE	FREQZ 4000
1.2		3.8 NM	3.1 NM	4.2 NM	
CATEGORY	A	B	C	D	
LPV DA	673/40 352 (400-¾)				
LNAV/VNAV DA	760/50 439 (500-1)				
LNAV MDA	780/24	459 (500-½)	780/40	780/50	780/50
			459 (500-¾)	459 (500-1)	459 (500-1)
CIRCLING	940-1	599 (600-1)	940-1½	1020-2¼	1020-2¼
			599 (600-1½)	679 (700-2¼)	679 (700-2¼)

SE-1, 16 APR 2026 to 14 MAY 2026

SE-1, 16 APR 2026 to 14 MAY 2026