


RNAV (RNP) X RWY 18L

FREDERICK W SMITH INTL/MEMPHIS (MEM)

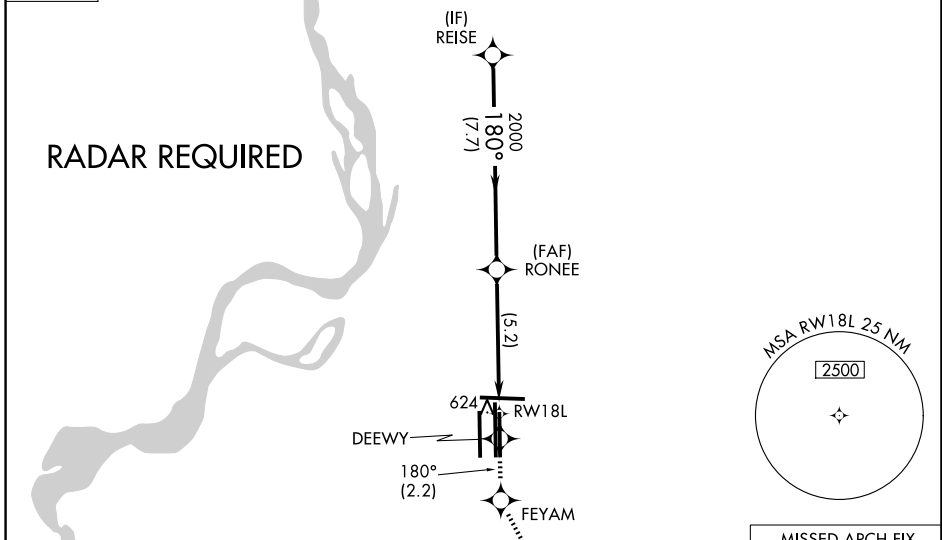
APP CRS	Rwy Ldg	9000
180°	TDZE	301
	Apt Elev	341

▼ For uncompensated Baro-VNAV systems, LNAV/VNAV NA below -9°C (16°F) or above 48°C (118 °F). Simultaneous approach authorized. GPS required. Missed approach requires RNP less than 1.0. For inop ALS increase RNP 0.11 all Cats visibility to RVR 6000.

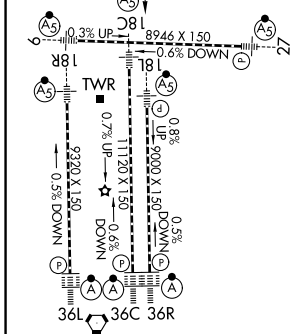
MALSRL

MISSED APPROACH: Climb to 5000 on track 180° to DEEWY and on track 180° to FEYAM left turn on track 153° to KEEZE and hold, continue climb-in-hold to 5000.

MEMPHIS APP CON	MEMPHIS TOWER	GND CON
119.1 291.6 (176°-355°)	118.3 257.8 (Rwy 9-27)	121.0 379.2 (Rwy 9-27)
125.8 338.3 (356°-175°)	119.7 257.8 (Rwys 18C-36C, 18L-36R)	121.9 379.2 (Rwys 18C-36C, 18L-36R)
	128.425 257.8 (Rwy 18R-36L)	121.65 379.2 (Rwy 18R-36L)

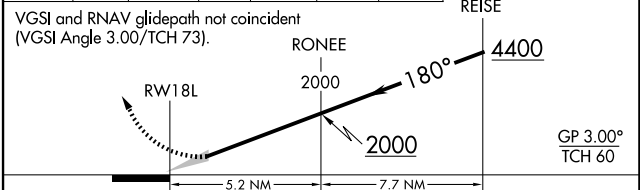
D-ATIS
127.75



ELEV 341	D	TDZE 301
----------	----------	----------



5000	tr 180°	DEEWY	tr 180°	FEYAM	tr 153°	KEEZE
------	---------	-------	---------	-------	---------	-------



CATEGORY	A	B	C	D
RNP 0.11 DA	647/40 346 (400-¾)			

TDZL/RCLS Rwys 18L, 18C, 18R, 36R, 36C, and 36L
 HIRL all rwys

AUTHORIZATION REQUIRED

SE-1, 16 APR 2026 to 14 MAY 2026

SE-1, 16 APR 2026 to 14 MAY 2026