


APP CRS	Rwy Ldg	9320
180°	TDZE	295
	Apt Elev	341

RNAV (RNP) X RWY 18R

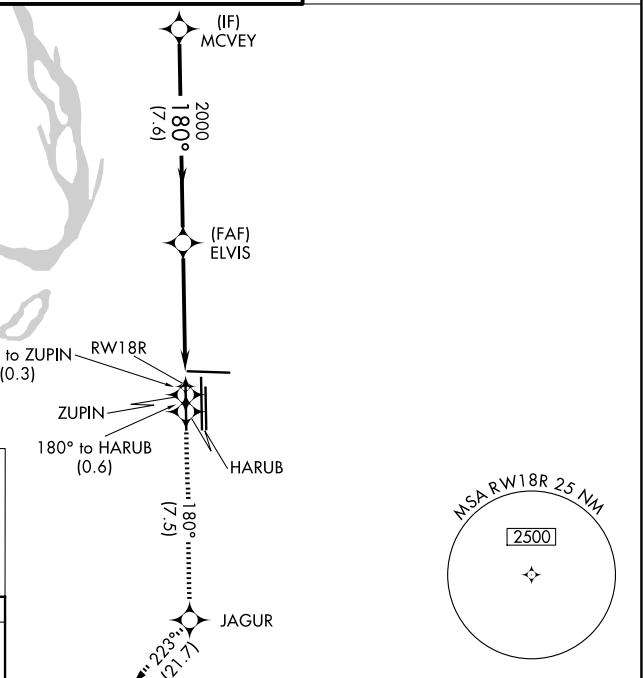
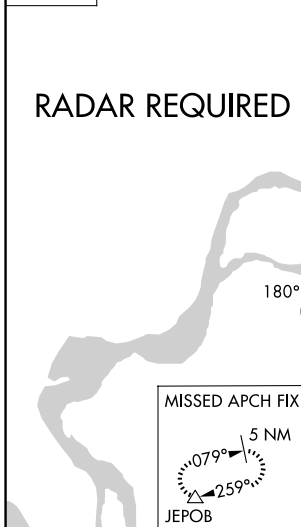
FREDERICK W SMITH INTL/MEMPHIS (MEM)

▼ For uncompensated Baro-VNAV systems, procedure NA below -9°C (16°F) or above 48°C (118°F). Simultaneous approach authorized. GPS required. Missed approach requires RNP less than 1.0. Use of FD or AP required during simultaneous operations.

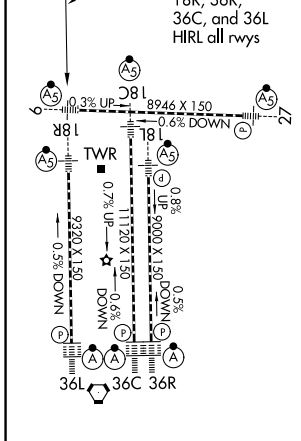
MALSR  MISSED APPROACH: Climb to 5000 on track 180° to ZUPIN and on track 180° to HARUB and on track 180° to JAGUR and on track 223° to JEPOB and hold.

MEMPHIS APP CON	MEMPHIS TOWER	GND CON
119.1 291.6 (176°-355°)	(Rwy 9-27) 118.3 257.8	(Rwy 9-27) 121.0 379.2
125.8 338.3 (356°-175°)	(Rwys 18C-36C, 18L-36R) 119.7 257.8	(Rwys 18C-36C, 18L-36R) 121.9 379.2
	(Rwy 18R-36L) 128.425 257.8	(Rwy 18R-36L) 121.65 379.2

D-ATIS
127.75



ELEV 341	D	TDZE 295
-----------------	----------	-----------------



5000	ZUPIN	HARUB	JAGUR	JEPOB
↑	tr 180°	tr 180°	tr 180°	tr 223°
	MCVEY			
		ELVIS		
		2000		4400
		180°		
			2000	
				GP 3.00°
				TCH 52
		5.1 NM	7.6 NM	

CATEGORY	A	B	C	D
RNP 0.14 DA		737/45	442 (400-7/8)	

AUTHORIZATION REQUIRED

SE-1, 16 APR 2026 to 14 MAY 2026

SE-1, 16 APR 2026 to 14 MAY 2026