


APP CRS 180°	Rwy Ldg TDZE Apt Elev	11120 290 341
------------------------	-----------------------------	--

RNAV (RNP) Y RWY 18C

FREDERICK W SMITH INTL/MEMPHIS (MEM)

▼ For uncompensated Baro-VNAV systems, procedure NA below -10°C (14°F) or above 54°C (130°F). GPS required. For inop ALS, increase RNP 0.30* all Cats visibility to 1½ SM and RNP 0.30 all Cats visibility to 1½ SM. Simultaneous approach authorized. Use of FD or AP required during simultaneous operations.

MALSR



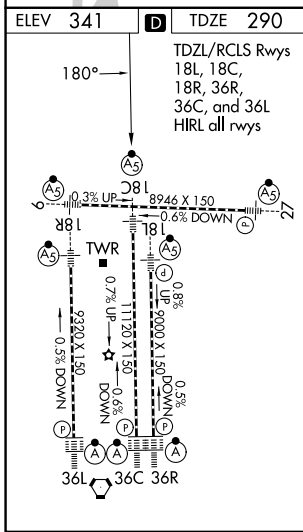
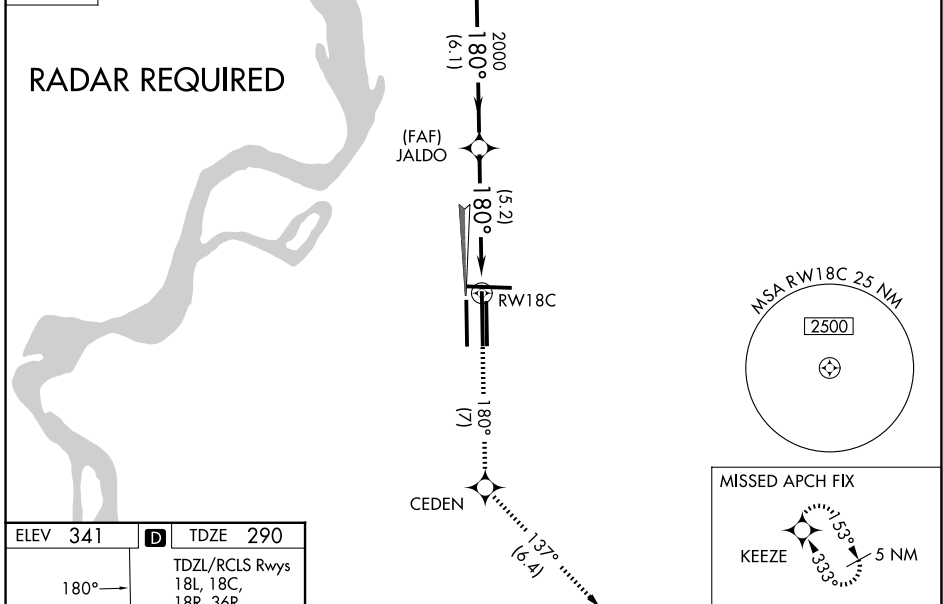
MISSED APPROACH: Climb to 5000 on track 180° to CEDEN on track 137° to KEEZE and hold, continue climb-in-hold to 5000. *Missed approach requires a minimum climb of 400 feet per NM to 1000.

MEMPHIS APP CON	(Rwy 9-27)	118.3 257.8	(Rwy 9-27)	121.0 379.2
119.1 291.6 (176°-355°)	(Rwys 18C-36C, 18L-36R)	119.7 257.8	(Rwys 18C-36C, 18L-36R)	121.9 379.2
125.8 338.3 (356°-175°)	(Rwy 18R-36L)	128.425 257.8	(Rwy 18R-36L)	121.65 379.2

MEMPHIS TOWER	
(Rwy 9-27)	118.3 257.8
(Rwys 18C-36C, 18L-36R)	119.7 257.8
(Rwy 18R-36L)	128.425 257.8

GND CON	
(Rwy 9-27)	121.0 379.2
(Rwys 18C-36C, 18L-36R)	121.9 379.2
(Rwy 18R-36L)	121.65 379.2

D-ATIS
127.75



5000	tr 180°	CEDEN	tr 137°	KEEZE	LARI
		JALDO			3900
		RWY 18C	2000	180°	2000
			5.2 NM	6.1 NM	
GP 3.00° TCH 54					
CATEGORY	A	B	C	D	
RNP 0.30 DA*	655/35 365 (400-5%)				
RNP 0.30 DA	747/54 457 (500-1)				

AUTHORIZATION REQUIRED

SE-1, 16 APR 2026 to 14 MAY 2026

SE-1, 16 APR 2026 to 14 MAY 2026