

WAAS CH 56606 W18A	APP CRS 180°	Rwy Ldg TDZE Apt Elev	9320 295 341
--	------------------------	-----------------------------	---

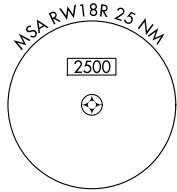
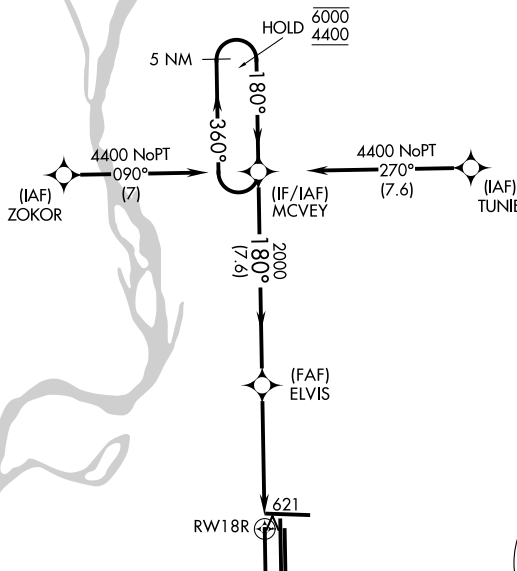
RNAV (GPS) Z RWY 18R

FREDERICK W SMITH INTL/MEMPHIS (MEM)

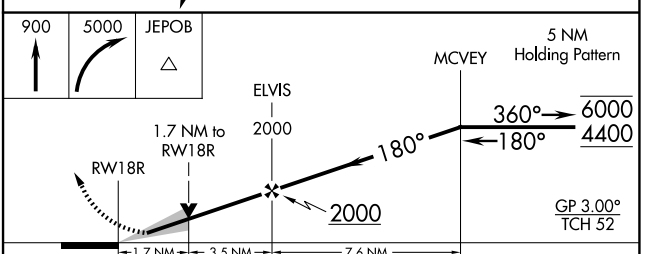
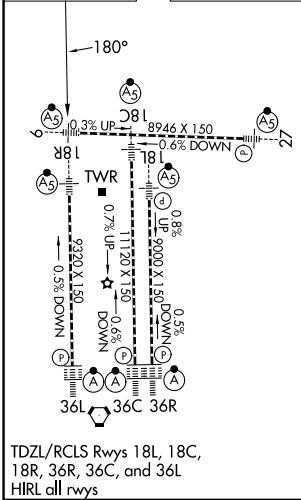
RNP APCH - GPS.	MALSR	MISSED APPROACH: Climb to 900 then climbing right turn to 5000 direct JEPOB and hold.
-----------------	-------	--

MEMPHIS APP CON	MEMPHIS TOWER	GND CON
119.1 291.6 (176°-355°)	(Rwy 9-27) 118.3 257.8	(Rwy 9-27) 121.0 379.2
125.8 338.3 (356°-175°)	(Rwys 18C-36C, 18L-36R) 119.7 257.8	(Rwys 18C-36C, 18L-36R) 121.9 379.2
	(Rwy 18R-36L) 128.425 257.8	(Rwy 18R-36L) 121.65 379.2

D-ATIS
127.75



ELEV 341	D	TDZE 295
-----------------	----------	-----------------



CATEGORY	A	B	C	D
LPV DA		495/18	200 (200-½)	
LNAV/VNAV DA		874-1¼	579 (600-1¼)	
LNAV MDA	880/24	585 (600-½)	880-1¼	585 (600-1¼)
CIRCLING	940-1	599 (600-1)	940-1¾ 599 (600-1¾)	1020-2¼ 679 (700-2¼)

MEMPHIS, TENNESSEE
Amdt 2G 07OCT21

35°03'N-89°59'W

FREDERICK W SMITH INTL/MEMPHIS (MEM)
RNAV (GPS) Z RWY 18R

SE-1, 16 APR 2026 to 14 MAY 2026

SE-1, 16 APR 2026 to 14 MAY 2026