

(SELPH7.SELPH) 26078

SELPH SEVEN DEPARTURE (RNAV)

AL-253 (FAA)

FREDERICK W SMITH INTL/MEMPHIS (M.E.M)

MEMPHIS, TENNESSEE

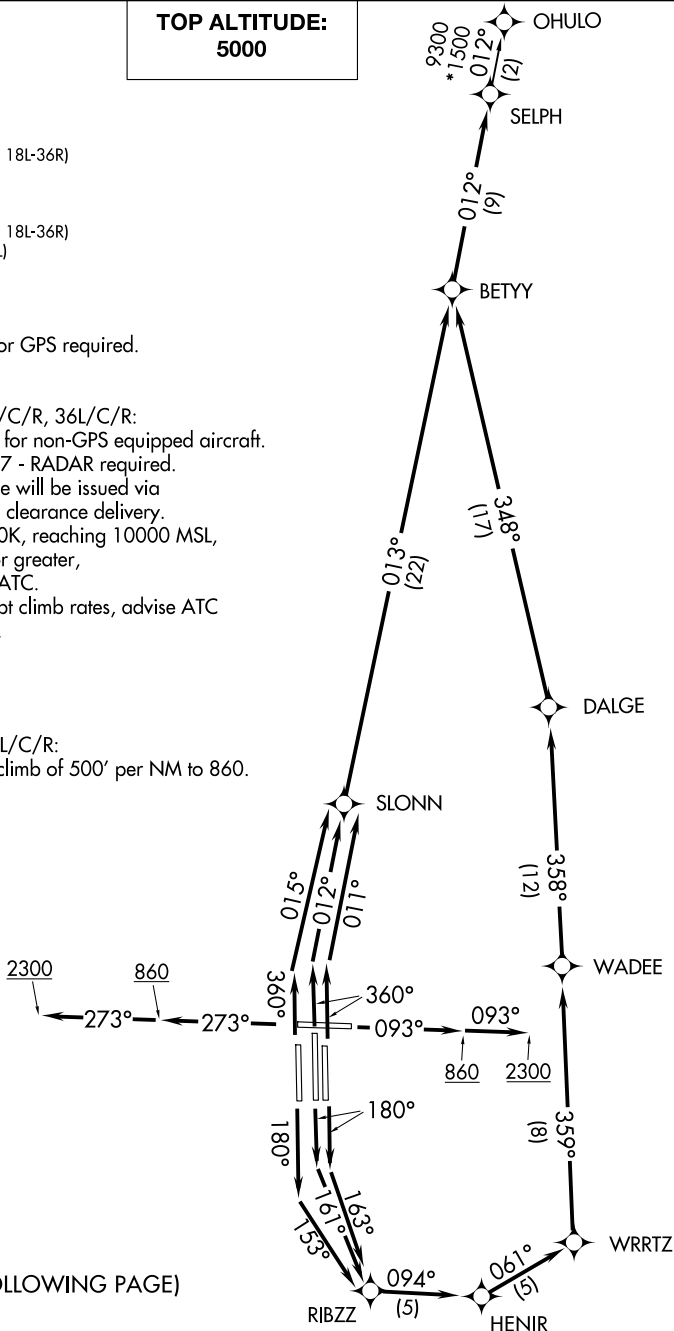
D-ATIS
 127.75
 CLINC DEL
 125.2
 CPDLC
 GND CON
 121.0 379.2 (Rwy 9-27)
 121.9 379.2 (Rwys 18C-36C, 18L-36R)
 121.65 379.2 (Rwy 18R-36L)
 MEMPHIS TOWER
 118.3 257.8 (Rwy 9-27)
 119.7 257.8 (Rwys 18C-36C, 18L-36R)
 128.425 257.8 (Rwy 18R-36L)
 MEMPHIS DEP CON
 124.15 385.45

**TOP ALTITUDE:
 5000**

- NOTE: DME/DME/IRU or GPS required.
 NOTE: RNAV 1.
 NOTE: Turbojets only.
 NOTE: Takeoff Rwy 18L/C/R, 36L/C/R:
 RADAR required for non-GPS equipped aircraft.
 NOTE: Takeoff Rwy 9, 27 - RADAR required.
 NOTE: Transponder code will be issued via
 PDC or Memphis clearance delivery.
 NOTE: Accelerate to 250K, reaching 10000 MSL,
 maintain 250K or greater,
 if unable advise ATC.
 NOTE: If unable to accept climb rates, advise ATC
 on initial contact.

TAKEOFF MINIMUMS:

Rwy 9, 18L/C/R, 27, 36L/C/R:
 Standard with minimum climb of 500' per NM to 860.



(CONTINUED ON FOLLOWING PAGE)

NOTE: Chart not to scale.

SELPH SEVEN DEPARTURE (RNAV)

(SELPH7.SELPH) 31DEC20

MEMPHIS, TENNESSEE
 FREDERICK W SMITH INTL/MEMPHIS (M.E.M)

SE-1, 16 APR 2026 to 14 MAY 2026

SE-1, 16 APR 2026 to 14 MAY 2026



DEPARTURE ROUTE DESCRIPTION

TAKEOFF RUNWAY 9: Climb on heading 093° to 860, then continue climb to 2300 on heading 093° or as assigned by ATC, for RADAR vectors to BETYY, then on depicted route to SELPH, thence . . .

TAKEOFF RUNWAY 18C: Climb on heading 180° to intercept course 161° to RIBZZ, then on depicted route to SELPH, thence . . .

TAKEOFF RUNWAY 18L: Climb on heading 180° to intercept course 163° to RIBZZ, then on depicted route to SELPH, thence . . .

TAKEOFF RUNWAY 18R: Climb on heading 180° to intercept course 153° to RIBZZ, then on depicted route to SELPH, thence . . .

TAKEOFF RUNWAY 27: Climb on heading 273° to 860, then continue climb to 2300 on heading 273° or as assigned by ATC, for RADAR vectors to BETYY, then on depicted route to SELPH, thence . . .

TAKEOFF RUNWAY 36C: Climb on heading 360° to intercept course 012° to SLONN, then on depicted route to SELPH, thence . . .

TAKEOFF RUNWAY 36L: Climb on heading 360° to intercept course 015° to SLONN, then on depicted route to SELPH, thence . . .

TAKEOFF RUNWAY 36R: Climb on heading 360° to intercept course 011° to SLONN, then on depicted route to SELPH, thence . . .

. . . maintain 5000. Expect clearance to filed altitude within ten (10) minutes after departure.

OHULO TRANSITION (SELPH7.OHULO)

SE-1, 16 APR 2026 to 14 MAY 2026

SE-1, 16 APR 2026 to 14 MAY 2026