

(WLDER.WLDER1) 26078  
**WLDER ONE ARRIVAL**

FREDERICK W SMITH INTL/MEMPHIS (MEM)  
 AL-253 (FAA) MEMPHIS, TENNESSEE

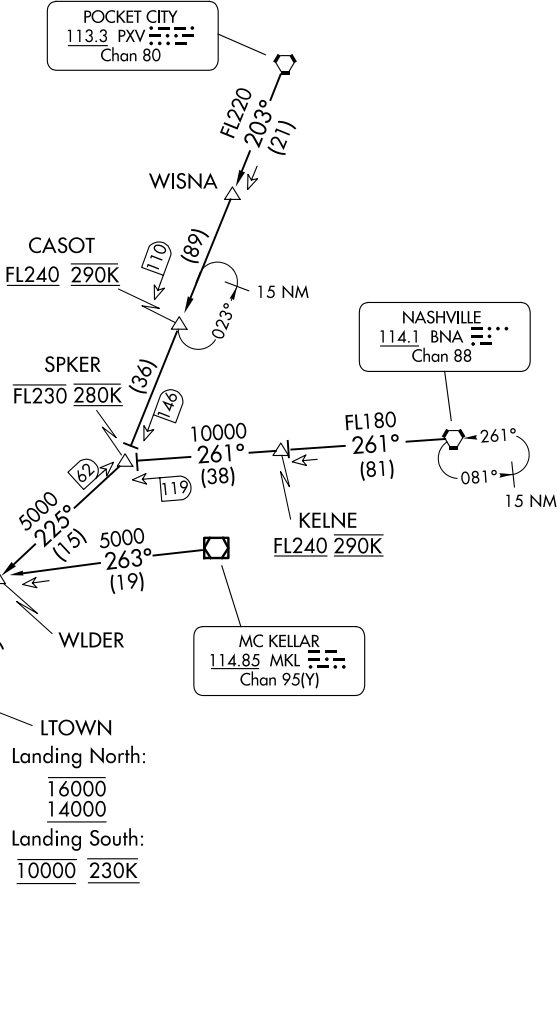
MEMPHIS APP CON  
 119.1 291.6 (176°-355°)  
 125.8 338.3 (356°-175°)  
 D-ATIS  
 127.75

POCKET CITY  
 113.3 PXV  
 Chan 80

NASHVILLE  
 114.1 BNA  
 Chan 88

MC KELLAR  
 114.85 MKL  
 Chan 95(Y)

MEMPHIS  
 117.5 MEM  
 Chan 122



- NOTE: DME and RADAR required.
- NOTE: Procedure NA for RNAV capable jets.
- NOTE: RNAV capable jets must file the BLUZZ RNAV STAR.
- NOTE: Maintain last assigned altitude until cleared to "Descend via the WLDER ONE", then comply with altitude restrictions as published.

(CONTINUED ON FOLLOWING PAGE)

NOTE: Chart not to scale.

**WLDER ONE ARRIVAL**  
 (WLDER.WLDER1) 24MAR22

MEMPHIS, TENNESSEE  
 FREDERICK W SMITH INTL/MEMPHIS (MEM)

SE-1, 16 APR 2026 to 14 MAY 2026

SE-1, 16 APR 2026 to 14 MAY 2026

ARRIVAL ROUTE DESCRIPTION

NASHVILLE TRANSITION (BNA.WLDER1): From over BNA VORTAC on BNA R-261 to SPKER, then on MEM R-045 to WLDER, thence. . . .

MC KELLAR TRANSITION (MKL.WLDER1): From over MKL VOR/DME on MKL R-263 to WLDER, thence. . . .

POCKET CITY TRANSITION (PXV.WLDER1): From over PXV VORTAC on PXV R-203 to SPKER, then on MEM R-045 to WLDER, thence. . . .

LANDING NORTH: From over WLDER/MEM VORTAC 47 DME on MEM R-045 to cross LTOWN/MEM 43 DME at or above 14000 and at or below 16000, then on MEM R-045 to cross DAPLE/MEM 27 DME, then on MEM R-045 to MRCEL/MEM 22 DME at or above 10000 and at or below 12000 and at 250K, then on MEM R-045 to cross DASAC/MEM 13 DME at or above 9000 and at or below 11000, then on on MEM R-045 to cross CLARK/MEM 8 DME at or above 8000 and at 210K, then on heading 180°, expect RADAR vectors to final approach course.

LANDING SOUTH: From over WLDER/MEM VORTAC 47 DME on MEM R-045 to cross LTOWN/MEM 43 DME at 10000 and 230K, then on heading 245°, expect RADAR vectors to final approach course.

SE-1, 16 APR 2026 to 14 MAY 2026

SE-1, 16 APR 2026 to 14 MAY 2026