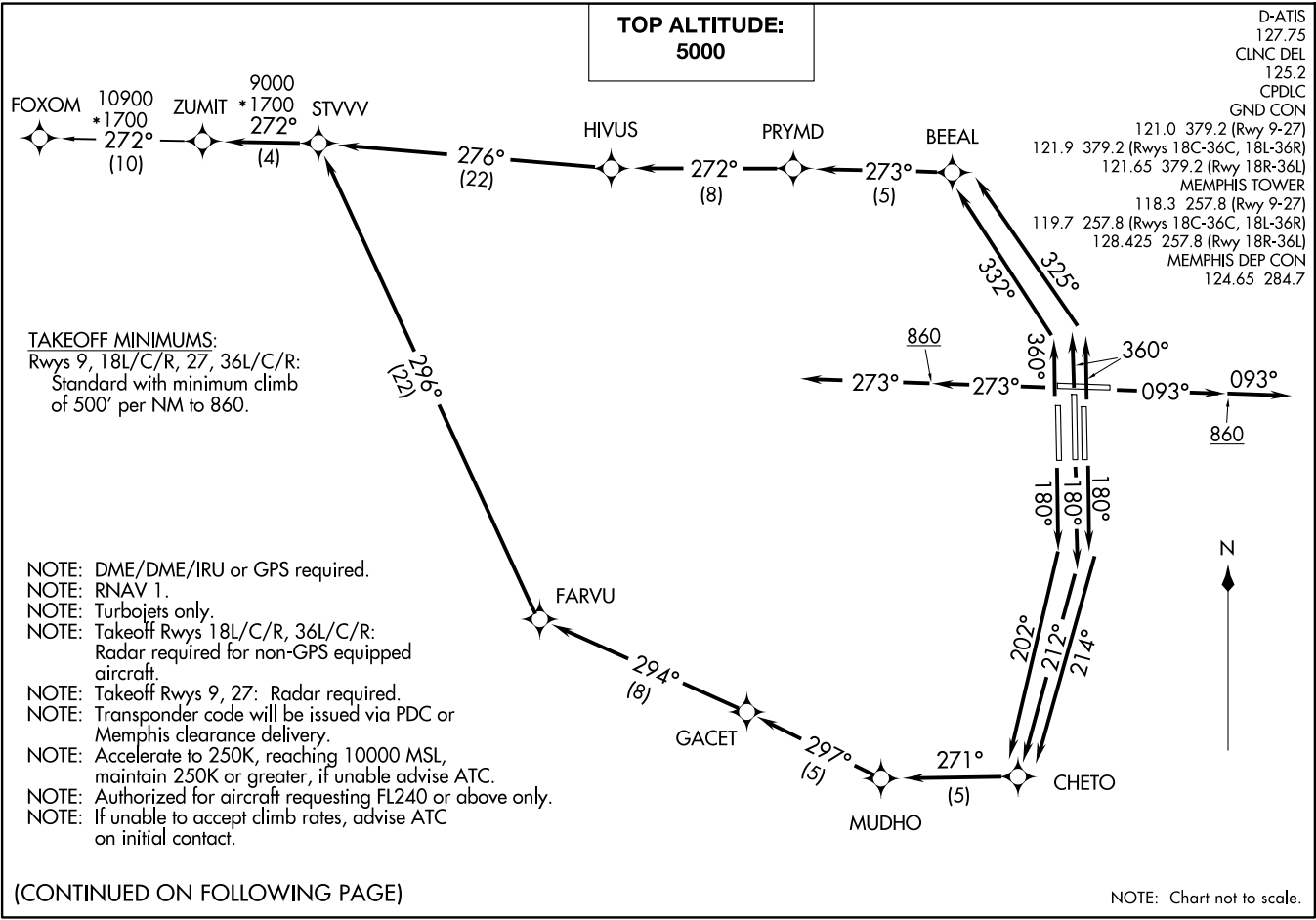


**TOP ALTITUDE:
5000**

D-ATIS
127.75
CLNC DEL
125.2
CPDLC
GND CON
121.0 379.2 (Rwy 9-27)
121.9 379.2 (Rwys 18C-36C, 18L-36R)
121.65 379.2 (Rwy 18R-36L)
MEMPHIS TOWER
118.3 257.8 (Rwy 9-27)
119.7 257.8 (Rwys 18C-36C, 18L-36R)
128.425 257.8 (Rwy 18R-36L)
MEMPHIS DEP CON
124.65 284.7

(ZUMIT5 ZUMIT) 26078
AL-253 (FAA)
FREDERICK W SMITH INTL/MEMPHIS (MEM) MEMPHIS, TENNESSEE

ZUMIT FIVE DEPARTURE (RNAV)
(ZUMIT5 ZUMIT) 31DECC20
MEMPHIS, TENNESSEE
FREDERICK W SMITH INTL/MEMPHIS (MEM)



DEPARTURE ROUTE DESCRIPTION



TAKEOFF RUNWAY 9: Climb on heading 093° to 860, then continue climb on heading 093°, expect vectors to STVVV, then on depicted route to ZUMIT, thence....

TAKEOFF RUNWAY 18C: Climb on heading 180° to intercept course 212° to CHETO, then on depicted route to ZUMIT, thence....

TAKEOFF RUNWAY 18L: Climb on heading 180° to intercept course 214° to CHETO, then on depicted route to ZUMIT, thence....

TAKEOFF RUNWAY 18R: Climb on heading 180° to intercept course 202° to CHETO, then on depicted route to ZUMIT, thence....

TAKEOFF RUNWAY 27: Climb on heading 273° to 860, then continue climb on heading 273°, expect vectors to STVVV, then on depicted route to ZUMIT, thence....

TAKEOFF RUNWAY 36L: Climb on heading 360° to intercept course 332° to BEEAL, then on depicted route to ZUMIT, thence....

TAKEOFF RUNWAYS 36C/R: Climb on heading 360° to intercept course 325° to BEEAL, then on depicted route to ZUMIT, thence....

....maintain 5000. Expect clearance to filed altitude within ten (10) minutes after departure.

FOXOM TRANSITION (ZUMIT5.FOXOM):

SE-1, 16 APR 2026 to 14 MAY 2026

SE-1, 16 APR 2026 to 14 MAY 2026