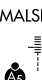


WAAS CH <b>86500</b> <b>W01A</b>	APP CRS <b>011°</b>	Rwy Ldg <b>9013</b> TDZE <b>289</b> Apt Elev <b>298</b>
--	------------------------	---

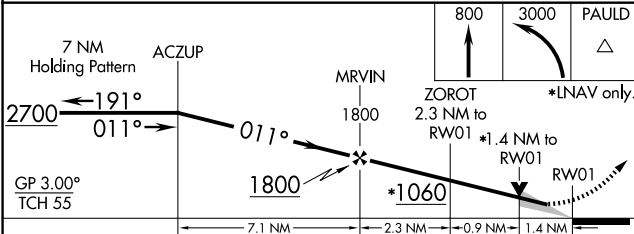
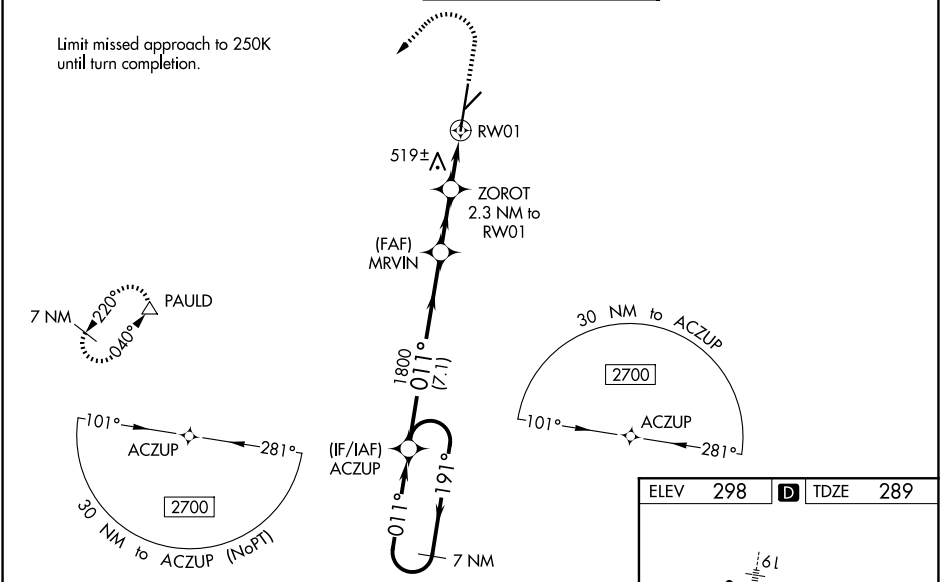
# RNAV (GPS) RWY 1

KEY FLD (MEI)

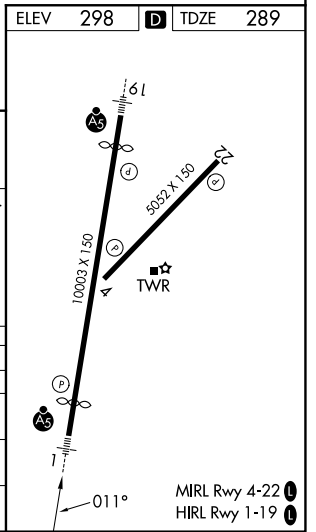
**⚠** For uncompensated Baro-VNAV systems, LNAV/VNAV NA below -8°C (18°F) or above 54°C (130°F). Circling NA southeast of Rwy 1 and 22. DME/DME RNP-0.3 NA. When local altimeter setting not received, use Hattiesburg/Laurel Rgnl altimeter setting and increase all DA 138 feet and all MDA 140 feet, LPV all Cats visibility to RVR 3100, LNAV/VNAV all Cats and LNAV Cats C, D, and E visibilities to 1½ mile, and Circling Cat C visibility ½ mile and Cat D visibility ¼ mile. For inop MALSRR increase LPV Cat E to RVR 4000, LNAV/VNAV Cat E visibility to RVR 6000, and LNAV Cat E visibility to 1½ mile. For inop MALSRR when using Hattiesburg/Laurel Rgnl altimeter setting, increase LPV all Cats visibility to RVR 5000, LNAV/VNAV Cat E visibility to 1½ mile, and LNAV Cat E visibility to 1¾ mile. VDP and Baro-VNAV NA when using Hattiesburg/Laurel Rgnl altimeter setting. Night landing: Rwy 22 NA. \*\* RVR 1800 authorized with use of FD or AP or HUD to DA, NA when using Hattiesburg/Laurel Rgnl altimeter setting.

**MALSRR**  
  
**MISSED APPROACH:**  
 Climb to 800 then climbing left turn to 3000 direct PAULD and hold.

ATIS <b>126.475 291.675</b>	MERIDIAN APP CON* <b>120.5 269.325</b>	KEY TOWER* <b>133.975 (CTAF) 257.8</b>	GND CON <b>121.9 348.6</b>	UNICOM <b>122.95</b>
--------------------------------	---	---	-------------------------------	-------------------------



CATEGORY	A	B	C	D	E
LPV DA **	489/24		200 (200-½)		
LNAV/VNAV DA	709/47		420 (500-1)		
LNAV MDA	780/24	491 (500-½)	780/50		491 (500-1)
CIRCLING	860-1 562 (600-1)	880-1 582 (600-1)	960-1¾ 662 (700-1¾)	1120-2¾ 822 (900-2¾)	1120-3 822 (900-3)



SC-4, 16 APR 2026 to 14 MAY 2026

SC-4, 16 APR 2026 to 14 MAY 2026