

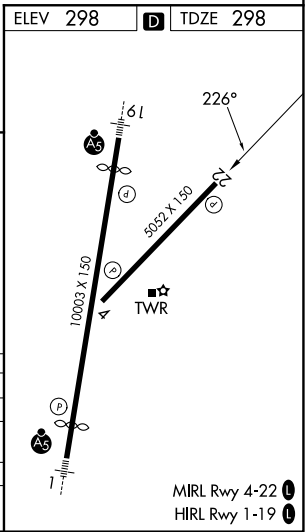
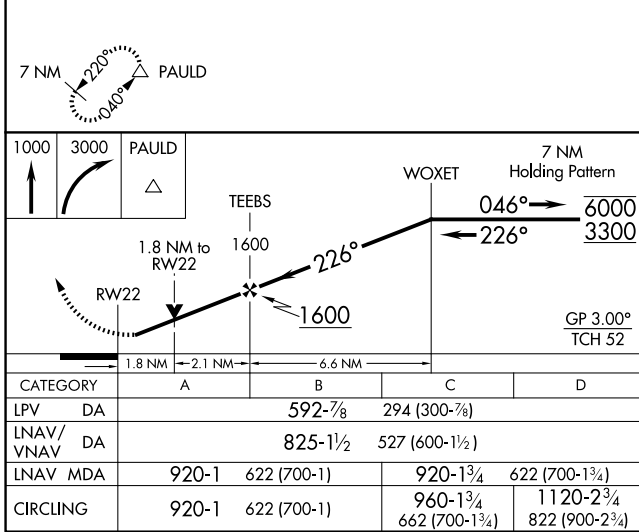
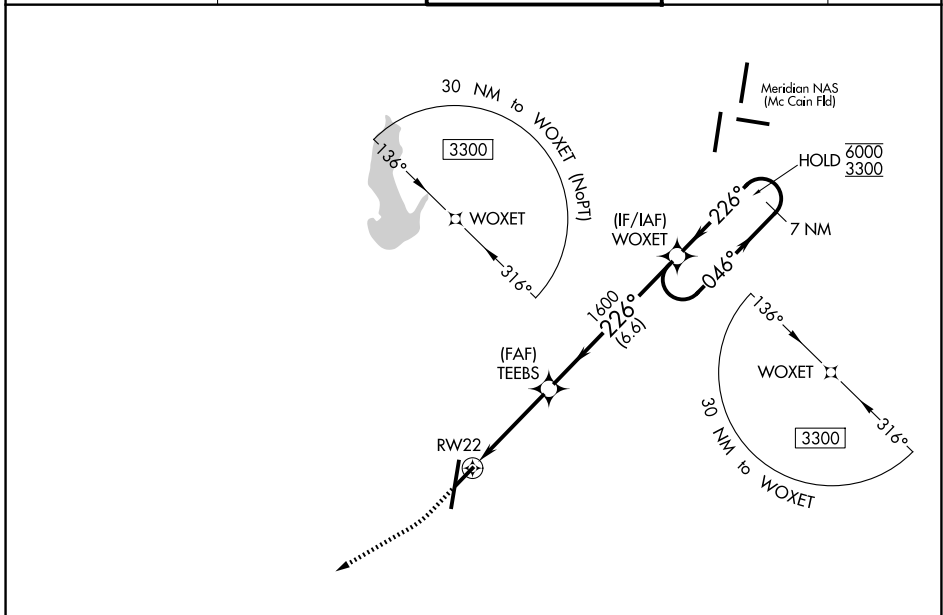
WAAS CH 48833 W22A	APP CRS 226°	Rwy Ldg TDZE 298 Apt Elev 298
--	------------------------	---

RNAV (GPS) RWY 22

KEY FLD (MEI)

RNP APCH - GPS.		MISSED APPROACH: Climb to 1000 then climbing right turn to 3000 direct PAULD and hold.
<p>▼ Rwy 22 helicopter visibility reduction below 3/4 SM NA. ▲ For uncompensated Baro-VNAV systems, LNAV/VNAV NA below -7°C or above 54°C. ▲ Circling NA east of Rwy 1 and southeast of Rwy 22.</p>		

ATIS 126.475 291.675	MERIDIAN APP CON* 120.5 269.325	KEY TOWER* 133.975 (CTAF) 257.8	GND CON 121.9 348.6	UNICOM 122.95
--------------------------------	---	---	-------------------------------	-------------------------



SC-4, 16 APR 2026 to 14 MAY 2026

SC-4, 16 APR 2026 to 14 MAY 2026

MIRL Rwy 4-22
HIRL Rwy 1-19