

RNAV (GPS) RWY 4

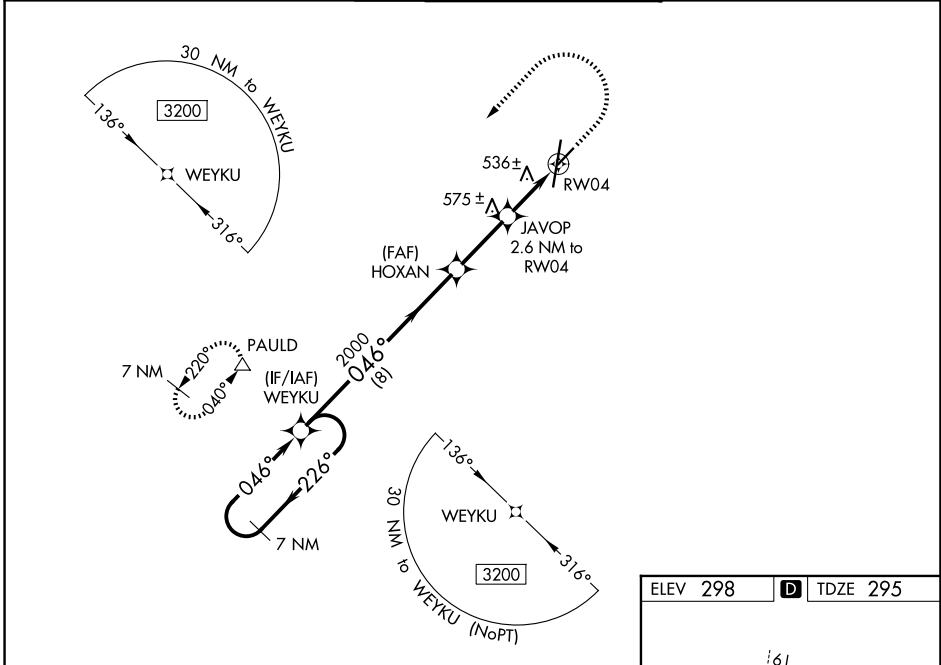
KEY FLD (MEI)

WAAS CH 42533 W04A	APP CRS 046°	Rwy Ldg TDZE 295 Apt Elev 298
--	------------------------	---

⚠ For uncompensated Baro-VNAV systems, LNAV/VNAV NA below -8°C (18°F) or above 54°C (130°F). Circling NA southeast of Rwy 1 and 22. DME/DME RNP-0.3 NA. When local altimeter setting not received, use Hattiesburg/Laurel Rgnl altimeter setting and increase all DA 138 feet and all MDA 140 feet; increase LPV and LNAV/VNAV all Cats visibilities ½ mile, LNAV Cats C/D visibility ½ mile, and Circling Cat C visibility ½ mile and Cat D visibility ¼ mile. Helicopter visibility reduction below ¾ SM NA. Baro-VNAV and VDP NA with Hattiesburg/Laurel Rgnl altimeter setting. Night landing: Rwy 22 NA.

MISSED APPROACH:
Climb to 1300 then climbing left turn to 3000 direct PAULD and hold.

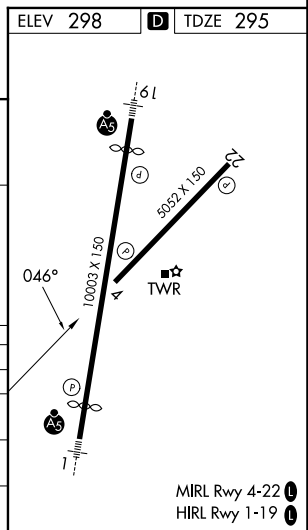
ATIS 126.475 291.675	MERIDIAN APP CON★ 120.5 269.325	KEY TOWER★ 133.975 (CTAF) 0 257.8	GND CON 121.9 348.6	UNICOM 122.95
--------------------------------	---	---	-------------------------------	-------------------------



SC-4, 16 APR 2026 to 14 MAY 2026

SC-4, 16 APR 2026 to 14 MAY 2026

7 NM Holding Pattern WEYKU	1300	3000	PAULD
3200 ← 226° 046° →	HOXAN 2000	JAVOP 2.6 NM to RW04	*LNAV only.
GP 3.00° TCH 45	2000	*1.4 NM to RW04	RW04
	8 NM	2.6 NM	1.2 NM
CATEGORY	A	B	C
LPV DA	576-7/8		281 (300-7/8)
LNAV/VNAV DA	849-17/8		554 (600-17/8)
LNAV MDA	800-1	505 (600-1)	800-13/8 505 (600-13/8)
CIRCLING	860-1 562 (600-1)	880-1 582 (600-1)	960-13/4 662 (700-13/4) 1120-23/4 822 (900-23/4)



MIRL Rwy 4-22
HIRL Rwy 1-19