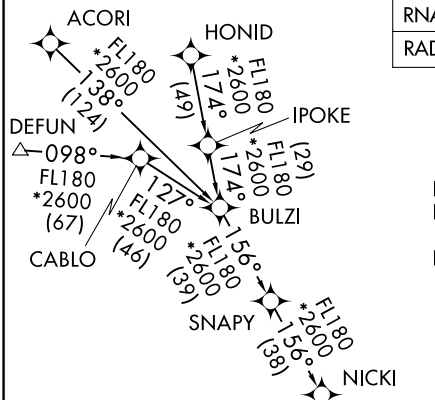


# CUURT ONE ARRIVAL (RNAV) Transition Routes

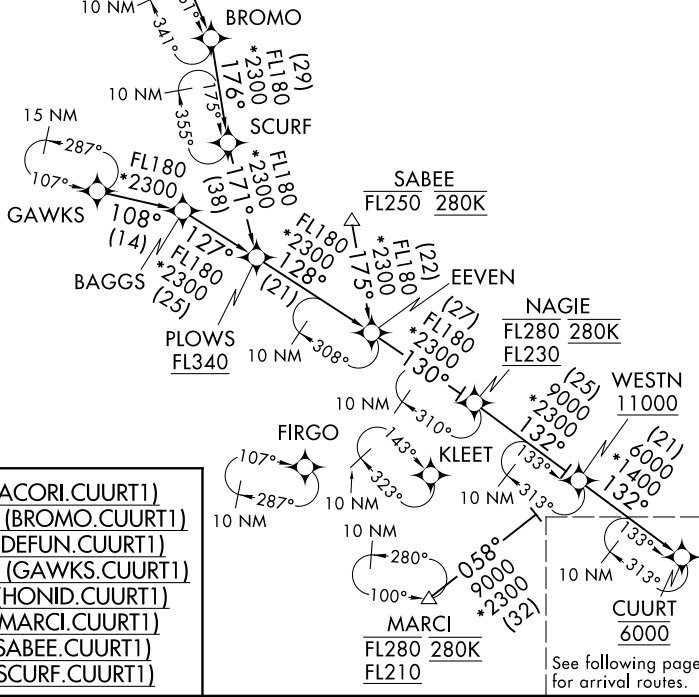
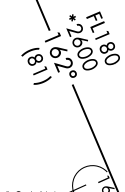
MIAMI, FLORIDA

RNAV 1 - DME/DME/IRU or GPS.
RADAR required.

MIAMI APP CON  
120.5 350.225  
ATIS  
125.9



NOTE: Jet aircraft only.  
NOTE: Do not file BROMO or SCURF Transition - to be assigned by ATC.  
NOTE: SABEE Transition for traffic departing KTPA area only.



NOTE: Chart not to scale.

- ACORI TRANSITION (ACORI.CUURT1)
- BROMO TRANSITION (BROMO.CUURT1)
- DEFUN TRANSITION (DEFUN.CUURT1)
- GAWKS TRANSITION (GAWKS.CUURT1)
- HONID TRANSITION (HONID.CUURT1)
- MARCI TRANSITION (MARCI.CUURT1)
- SABEE TRANSITION (SABEE.CUURT1)
- SCURF TRANSITION (SCURF.CUURT1)

See following page for arrival routes.

# CUURT ONE ARRIVAL (RNAV) Transition Routes

MIAMI, FLORIDA

SE-3, 16 APR 2026 to 14 MAY 2026

SE-3, 16 APR 2026 to 14 MAY 2026

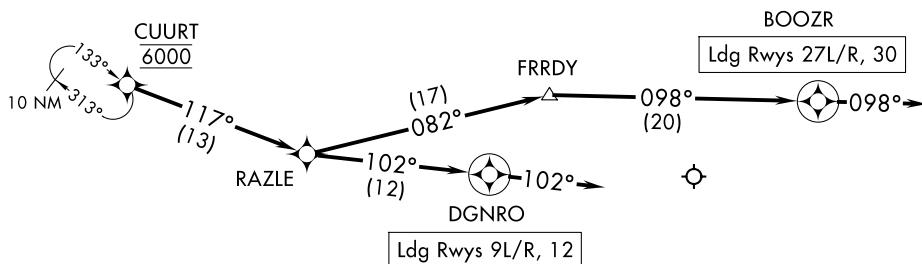
# CUURT ONE ARRIVAL (RNAV) Arrival Routes

RNAV 1 - DME/DME/IRU or GPS.

RADAR required.

MIAMI APP CON  
120.5 350.225  
ATIS  
125.9

NOTE: Jet aircraft only.  
NOTE: Landing east use Rwy 9L Transition, landing west use Rwy 27R Transition.  
Expect runway assignment from MIA approach prior to CUURT.  
NOTE: Between 2300L and 0700L expect Rwy 12.



SE-3, 16 APR 2026 to 14 MAY 2026

SE-3, 16 APR 2026 to 14 MAY 2026

NOTE: Chart not to scale.

## ARRIVAL ROUTE DESCRIPTION

From CUURT on track 117° to RAZLE.

**LANDING RUNWAYS 9L/R, 12:** From RAZLE on track 102° to DGNRO, then on track 102°. Expect RADAR vectors to final approach course.

**LANDING RUNWAYS 27L/R, 30:** From RAZLE on track 082° to FRRDY, then on track 098° to BOOZR, then on track 098°. Expect RADAR vectors to final approach course.