

(FLMGO2.FLMGO) 25331

AL-256 (FAA)

MIAMI-OPA LOCKA EXEC (OPF)

FLMGO TWO DEPARTURE(RNAV)

MIAMI, FLORIDA

MIAMI DEP CON
 126.85 290.325
 ATIS
 125.9
 CLNC DEL
 119.2
 GND CON
 120.025
 OPA LOCKA TOWER ★
 134.675 (CTAF)

**TOP ALTITUDE:
 ASSIGNED BY ATC**

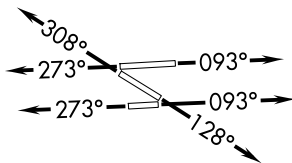
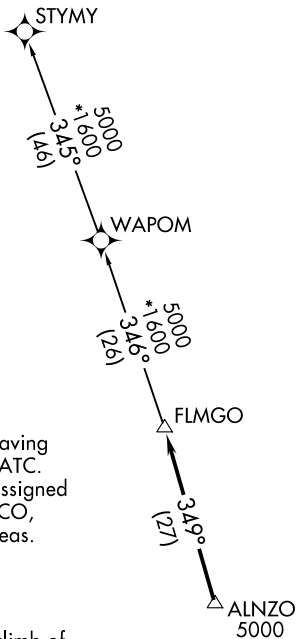
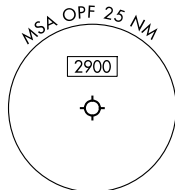
RNAV 1 - DME/DME/IRU or GPS.

RADAR required.

NOTE: Jet aircraft only.
 NOTE: Accelerate to 250K until leaving 10000, if unable, advise ATC.
 NOTE: WAPOM Transition ATC assigned except aircraft landing; MCO, DAB, and MLB terminal areas.

TAKEOFF MINIMUMS

- Rwy 9L: Standard with minimum climb of 500'/NM to 1000.
- Rwy 9R: Standard with minimum climb of 500'/NM to 700.
- Rwys 12, 27R: Standard with minimum climb of 500'/NM to 600.
- Rwys 27L, 30: Standard.



NOTE: Chart not to scale.

DEPARTURE ROUTE DESCRIPTION

- TAKEOFF RUNWAYS 9L/R: Climb on heading 093° or as assigned by ATC for RADAR vectors to cross ALNZO at or above 5000, thence. . . .
- TAKEOFF RUNWAY 12: Climb on heading 128° or as assigned by ATC for RADAR vectors to cross ALNZO at or above 5000, thence. . . .
- TAKEOFF RUNWAYS 27L/R: Climb on heading 273° or as assigned by ATC for RADAR vectors to cross ALNZO at or above 5000, thence. . . .
- TAKEOFF RUNWAY 30: Climb on heading 308° or as assigned by ATC for RADAR vectors to cross ALNZO at or above 5000, thence. . . .

. . . on track 349° to FLMGO, then on assigned transition. Maintain ATC assigned altitude. Expect filed altitude within 10 minutes after departure.

- STYMY TRANSITION (FLMGO2.STYMY)
- WAPOM TRANSITION (FLMGO2.WAPOM)

FLMGO TWO DEPARTURE(RNAV)
 (FLMGO2.FLMGO) 21MAR24

MIAMI, FLORIDA
 MIAMI-OPA LOCKA EXEC (OPF)

SE-3, 16 APR 2026 to 14 MAY 2026

SE-3, 16 APR 2026 to 14 MAY 2026