

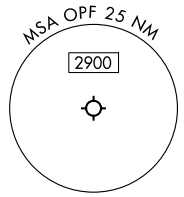
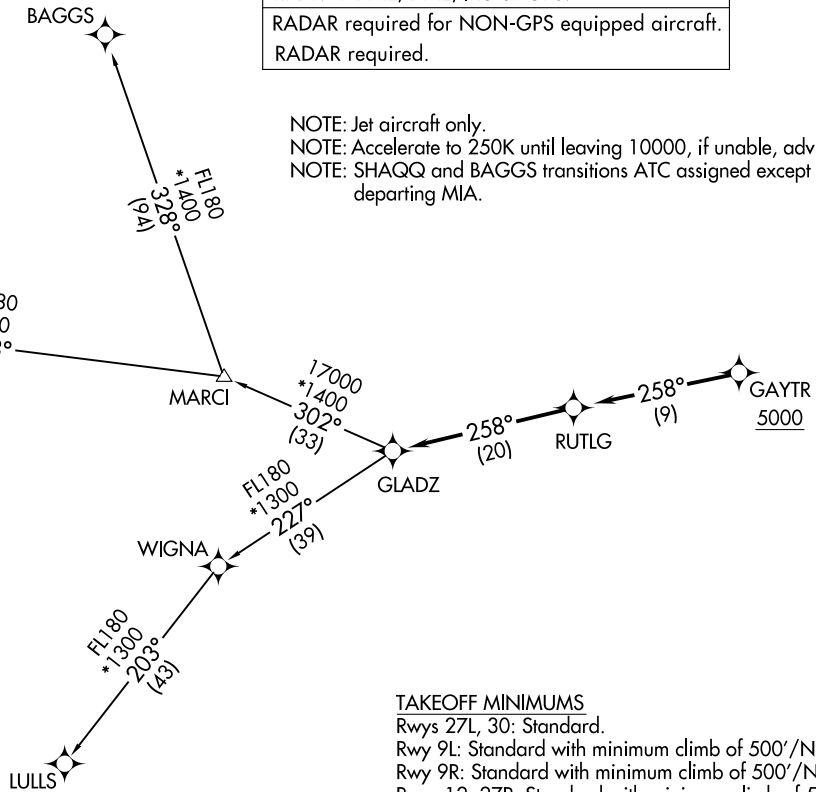
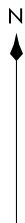
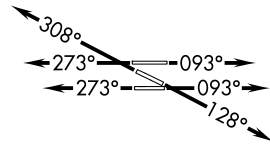
GLADZ FOUR DEPARTURE (RNAV)
(GLADZ4, GLADZ) 31OCT24

MIAMI DEP CON
126.85 290.325
ATIS
125.9
CLINC DEL
119.2
GND CON
120.025
OPA LOCKA TOWER*
134.675 (CTAF)

RNAV-1 DME/DME/IRU or GPS.
RADAR required for NON-GPS equipped aircraft.
RADAR required.

**TOP ALTITUDE:
ASSIGNED BY ATC**

NOTE: Jet aircraft only.
NOTE: Accelerate to 250K until leaving 10000, if unable, advise ATC.
NOTE: SHAQQ and BAGGS transitions ATC assigned except aircraft departing MIA.



TAKEOFF MINIMUMS
Rwys 27L, 30: Standard.
Rwy 9L: Standard with minimum climb of 500'/NM to 1000.
Rwy 9R: Standard with minimum climb of 500'/NM to 700.
Rwys 12, 27R: Standard with minimum climb of 500'/NM to 600.

NOTE: Chart not to scale.

(CONTINUED ON FOLLOWING PAGE)

(GLADZ4, GLADZ) 25331
GLADZ FOUR DEPARTURE (RNAV)

AL-256 (FAA)

MIAMI-OPA LOCKA EXEC (OPF)
MIAMI, FLORIDA

MIAMI, FLORIDA
MIAMI-OPA LOCKA EXEC (OPF)

GLADZ FOUR DEPARTURE (RNAV)



DEPARTURE ROUTE DESCRIPTION

TAKEOFF RUNWAYS 9L/R: Climb on heading 093° or as assigned by ATC for RADAR vectors to cross GAYTR at or above 5000, thence. . . .

TAKEOFF RUNWAY 12: Climb on heading 128° or as assigned by ATC for RADAR vectors to cross GAYTR at or above 5000, thence. . . .

TAKEOFF RUNWAYS 27L/R: Climb on heading 273° or as assigned by ATC for RADAR vectors to cross GAYTR at or above 5000, thence. . . .

TAKEOFF RUNWAY 30: Climb on heading 308° or as assigned by ATC for RADAR vectors to cross GAYTR at or above 5000, thence. . . .

. . . on track 258° to RUTLG, then on track 258° to GLADZ, then on transition. Maintain ATC assigned altitude, expect clearance to filed altitude 10 minutes after departure.

BAGGS TRANSITION (GLADZ4.BAGGS)

LULLS TRANSITION (GLADZ4.LULLS)

SHAQQ TRANSITION (GLADZ4.SHAQQ)

SE-3, 16 APR 2026 to 14 MAY 2026

SE-3, 16 APR 2026 to 14 MAY 2026