

LOC/DME I-OLX <b>111.55</b> Chan 52 (Y)	APP CRS <b>128°</b>	Rwy Ldg 6000 TDZE 8 Apt Elev 8
---	------------------------	---

# ILS or LOC RWY 12

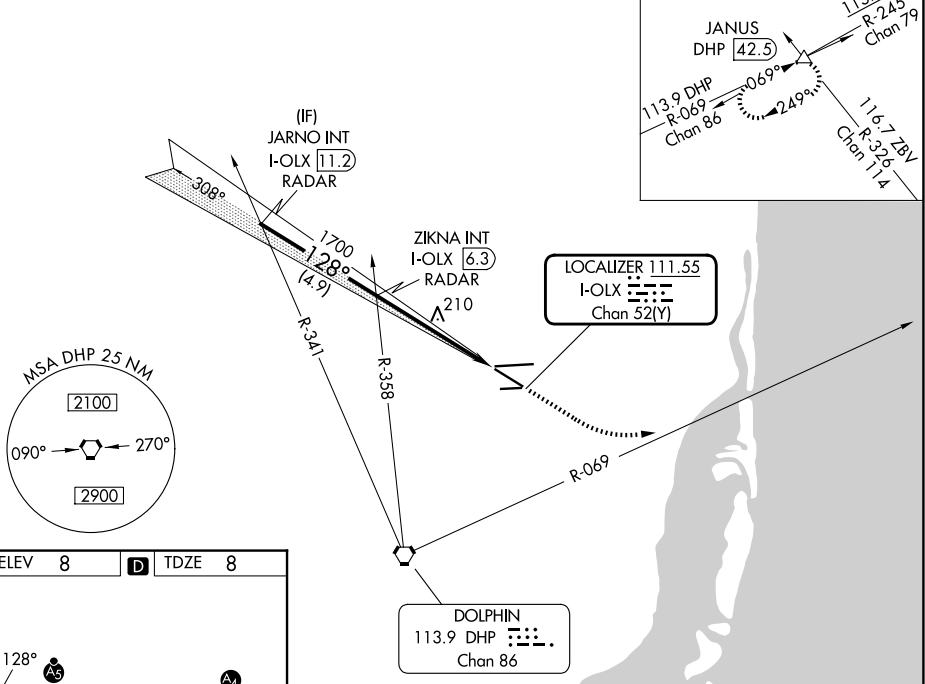
MIAMI-OPA LOCKA EXEC (OPF)

**⚠** Inop table does not apply to S-ILS 12. Helicopter visibility reduction below 3/4 SM NA. VDP NA with Miami Intl altimeter setting. When local altimeter setting not received, use Miami Intl altimeter setting and increase all DA/MDA 20 feet and Circling Cat D visibility 1/4 SM. For inop MALSR, increase S-LOC 12 Cats A and B visibility to 1 mile and Cats C and D visibility to 1 1/2 miles.

**MALSR**  
MISSED APPROACH: Climb to 800 then climbing left turn to 2000 on heading 090° and DHP VORTAC R-069 to JANUS INT/DHP 42.5 DME and hold.

ATIS <b>125.9</b>	MIAMI APP CON <b>128.6 306.975</b>	OPA LOCKA TOWER * <b>134.675 (CTAF) 0</b>	GND CON <b>120.025</b>	CLNC DEL <b>119.2</b>	GCO <b>119.45</b>
----------------------	---------------------------------------	--	---------------------------	--------------------------	----------------------

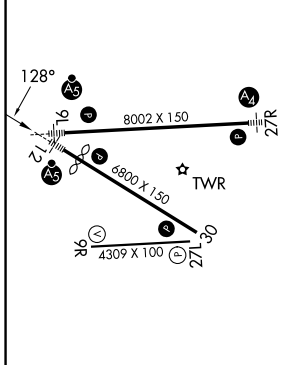
## RADAR REQUIRED



SE-3, 16 APR 2026 to 14 MAY 2026

SE-3, 16 APR 2026 to 14 MAY 2026

ELEV 8	<b>D</b>	TDZE 8
--------	----------	--------



MIRL Rwy 9R-27L
HIRL Rwys 9L-27R and 12-30
FAF to MAP 5.2 NM
Knots: 60, 90, 120, 150, 180
Min:Sec: 5:12, 3:28, 2:36, 2:05, 1:44

JARNO INT I-OLX 11.2 RADAR	ZIKNA INT I-OLX 6.3 RADAR	800	2000	JANUS
		hdg 090°	DHP R-069	
		*LOC only.		
1700 — 128° — 1700		*I-OLX 2.6 I-OLX 1.2		
GS 3.00° TCH 53		4.9 NM   3.7 NM   1.5 NM		
CATEGORY	A	B	C	D
S-ILS 12	208-3/4 200 (200-3/4)			
S-LOC 12	520-3/4 512 (600-3/4)		520-1 512 (600-1)	
CIRCLING	540-1 532 (600-1)		620-1 3/4 740-2 1/4 612 (700-1 1/4) 732 (800-2 1/4)	