

(LIFRR2.LIFRR) 25331

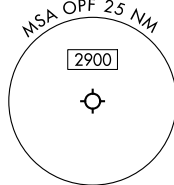
AL-256 (FAA)

MIAMI-OPA LOCKA EXEC (OPF')
MIAMI, FLORIDA

LIFRR TWO DEPARTURE (RNAV)

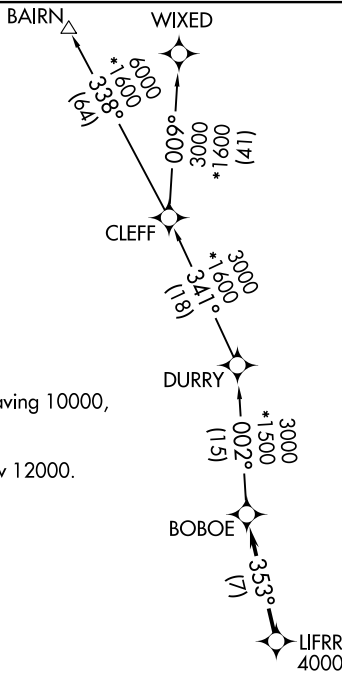
MIAMI DEP CON
126.85 290.325
ATIS
125.9
CLNC DEL
119.2
GND CON
120.025
OPA LOCKA TOWER *
134.675 (CTAF)

**TOP ALTITUDE:
ASSIGNED BY ATC**



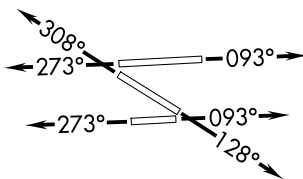
RNAV 1 - DME/DME/IRU or GPS.
RADAR required for non-GPS
equipped aircraft.

NOTE: Accelerate to 250K until leaving 10000,
if unable, advise ATC.
NOTE: Jet aircraft only.
NOTE: For aircraft filed at or below 12000.



TAKEOFF MINIMUMS

- Rwy 9L: Standard with minimum climb of 500'/NM to 1000.
- Rwy 9R: Standard with minimum climb of 500'/NM to 700.
- Rwys 12, 27R: Standard with minimum climb of 500'/NM to 600.
- Rwys 27L, 30: Standard.



NOTE: Chart not to scale.



DEPARTURE ROUTE DESCRIPTION

TAKEOFF RUNWAYS 9L/R: Climb on heading 093° or as assigned by ATC, thence . . .
TAKEOFF RUNWAY 12: Climb on heading 128° or as assigned by ATC, thence . . .
TAKEOFF RUNWAYS 27L/R: Climb on heading 273° or as assigned by ATC, thence . . .
TAKEOFF RUNWAY 30: Climb on heading 308° or as assigned by ATC, thence . . .
 . . .for RADAR vector to cross LIFRR at or above 4000, then on track 353° to BOBOE, then on assigned transition, maintain ATC assigned altitude, expect clearance to filed altitude within 10 minutes after departure.

BAIRN TRANSITION (LIFRR2.BAIRN)
WIXED TRANSITION (LIFRR2.WIXED)

LIFRR TWO DEPARTURE (RNAV)

(LIFRR2.LIFRR) 21MAR24

MIAMI, FLORIDA
MIAMI-OPA LOCKA EXEC (OPF')

SE-3, 16 APR 2026 to 14 MAY 2026

SE-3, 16 APR 2026 to 14 MAY 2026