

WAAS CH <b>62922</b> <b>W27A</b>	APP CRS <b>273°</b>	Rwy Ldg <b>8002</b> TDZE <b>8</b> Apt Elev <b>8</b>
--	------------------------	---

# RNAV (GPS) RWY 27R

MIAMI-OPA LOCKA EXEC (OPF)

RNP APCH - GPS.

**⚠** Baro-VNAV NA when using Miami Intl altimeter setting. For uncompensated Baro-VNAV systems, LNAV/VNAV NA below 5°C or above 54°C. When local altimeter setting not received, use Miami Intl altimeter setting and increase all DA/MDA 20 feet and Circling Cat D visibility ¼ SM. For inop ALS, increase LPV all Cats visibility to ¾ SM, LNAV/VNAV all Cats to 1¾ SM, and LNAV Cats C and D visibility to 1¾ SM. Rwy 27R helicopter visibility reduction below ¾ SM NA.

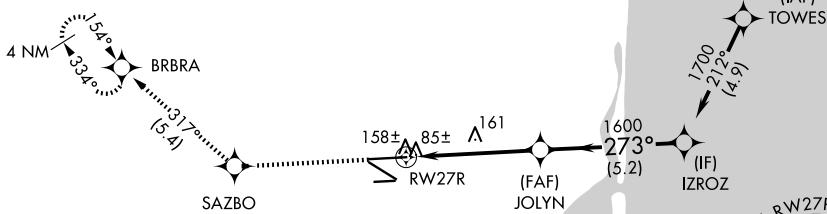
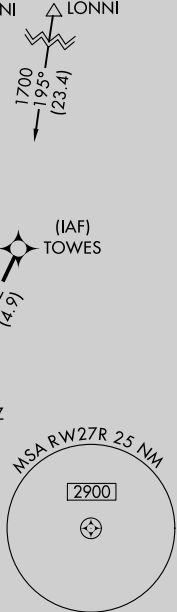
MALS



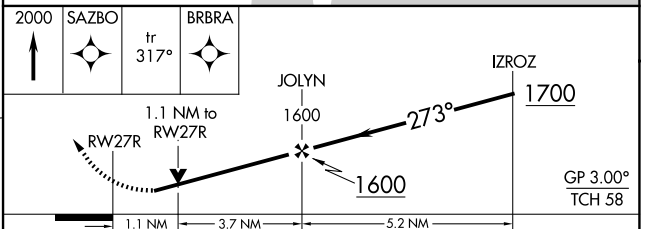
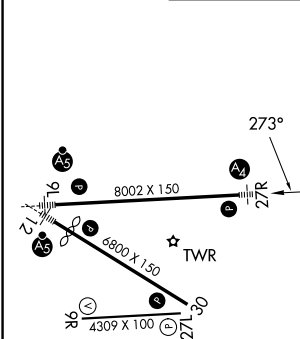
MISSED APPROACH: Climb to 2000 direct SAZBO and on track 317° to BRBRA and hold.

ATIS <b>125.9</b>	MIAMI APP CON <b>128.6 306.975</b>	OPA LOCKA TOWER ★ <b>134.675 (CTAF) 0</b>	GND CON <b>120.025</b>	CLNC DEL <b>119.2</b>	GCO <b>119.45</b>
----------------------	---------------------------------------	--	---------------------------	--------------------------	----------------------

Procedure NA for arrivals at LONNI on V295, BR64V northbound.



ELEV <b>8</b>	<b>D</b>	TDZE <b>8</b>
---------------	----------	---------------



CATEGORY	A	B	C	D
LPV DA		291-¾	283 (300-¾)	
LNAV/VNAV DA		413-1	405 (500-1)	
LNAV MDA	420-¾	412 (500-¾)	420-1	412 (500-1)
CIRCLING	540-1	532 (600-1)	620-1¾ 612 (700-1¾)	740-2¼ 732 (800-2¼)

MIRL Rwy 9R-27L  
HIRL Rwy 9L-27R and 12-30