

(ALTNN2.ALTNN) 25331

AL-257 (FAA)

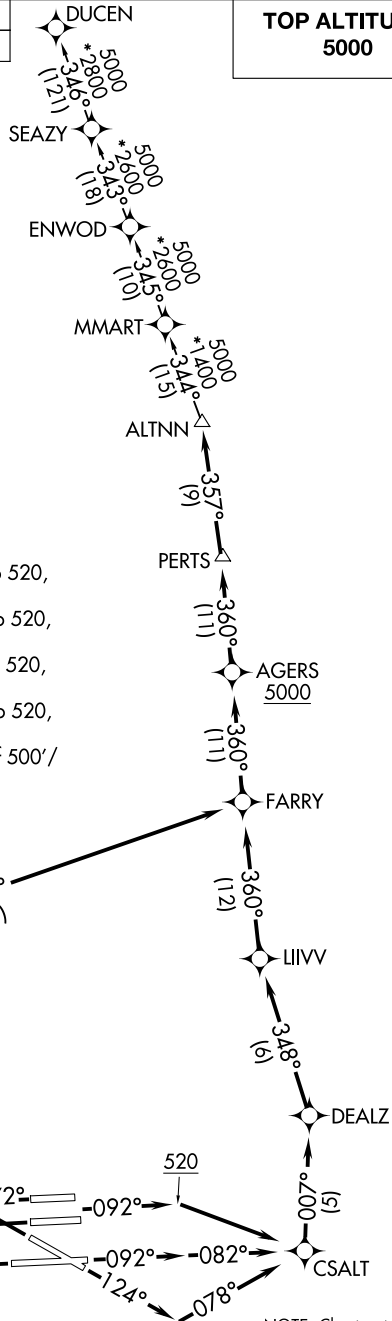
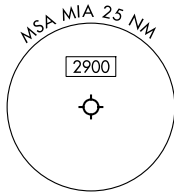
MIAMI INTL (MIA)
MIAMI, FLORIDA

ALTNN TWO DEPARTURE (RNAV)

MIAMI DEP CON
126.85 290.325
D-ATIS
133.675
CLNC DEL
135.35
CPDLC
GND CON
121.8 348.6 (8L/R, 12, 26L/R)
127.5 348.6 (9, 27, 30)
MIAMI TOWER
118.3 256.9

RNAV 1 - DME/DME/IRU or GPS.
RADAR required.

**TOP ALTITUDE:
5000**



TAKEOFF MINIMUMS

- Rwy 8L: Standard with minimum climb of 500'/NM to 520, then minimum climb of 215 to 1400.
- Rwy 8R: Standard with minimum climb of 500'/NM to 520, then minimum climb of 235 to 1400.
- Rwy 9: Standard with minimum climb of 500'/NM to 520, then minimum climb of 240 to 1400.
- Rwy 12: Standard with minimum climb of 500'/NM to 520, then minimum climb of 230 to 1400.
- Rwys 26L/R, 27, 30: Standard with minimum climb of 500'/NM to 520.

NOTE: Jet aircraft only.
NOTE: Accelerate to 250K until leaving 10000, if unable, advise ATC.

(CONTINUED ON FOLLOWING PAGE)

NOTE: Chart not to scale.

ALTNN TWO DEPARTURE (RNAV)

(ALTNN2.ALTNN) 21MAR24

MIAMI, FLORIDA
MIAMI INTL (MIA)

SE-3, 16 APR 2026 to 14 MAY 2026

SE-3, 16 APR 2026 to 14 MAY 2026

ALTNN TWO DEPARTURE (RNAV)



DEPARTURE ROUTE DESCRIPTION

SEE ADDITIONAL REQUIREMENTS ON AAUP

TAKEOFF RUNWAYS 8L/R: Climb on heading 092° to 520, then direct CSALT, then on track 007° to DEALZ, then on track 348° to LIIVV, then on track 360° to FARRY, then on track 360° to cross AGERS at or above 5000, thence

TAKEOFF RUNWAY 9: Climb on heading 092° to intercept course 082° to CSALT, then on track 007° to DEALZ, then on track 348° to LIIVV, then on track 360° to FARRY, then on track 360° to cross AGERS at or above 5000, thence

TAKEOFF RUNWAY 12: Climb on heading 124° to intercept course 078° to CSALT, then on track 007° to DEALZ, then on track 348° to LIIVV, then on track 360° to FARRY, then on track 360° to cross AGERS at or above 5000, thence

TAKEOFF RUNWAY 26L: Climb on heading 272° to intercept course 283° to KROCS, then on track 315° to RUSSS, then on track 007° to RMIRO, then on track 046° to FARRY, then on track 360° to cross AGERS at or above 5000, thence

TAKEOFF RUNWAY 26R: Climb on heading 272° to intercept course 282° to KROCS, then on track 315° to RUSSS, then on track 007° to RMIRO, then on track 046° to FARRY, then on track 360° to cross AGERS at or above 5000, thence

TAKEOFF RUNWAY 27: Climb on heading 272° to intercept course 298° to KROCS, then on track 315° to RUSSS, then on track 007° to RMIRO, then on track 046° to FARRY, then on track 360° to cross AGERS at or above 5000, thence

TAKEOFF RUNWAY 30: Climb on heading 304° to 520, then direct WADLE, then on track 352° to RMIRO, then on track 046° to FARRY, then on track 360° to cross AGERS at or above 5000, thence

. . . . on track 360° to PERTS, then on track 357° to ALTNN, then on assigned transition, maintain 5000, expect filed altitude within 10 minutes after departure.

DUCEN TRANSITION (ALTNN2.DUCEN)

SE-3, 16 APR 2026 to 14 MAY 2026

SE-3, 16 APR 2026 to 14 MAY 2026