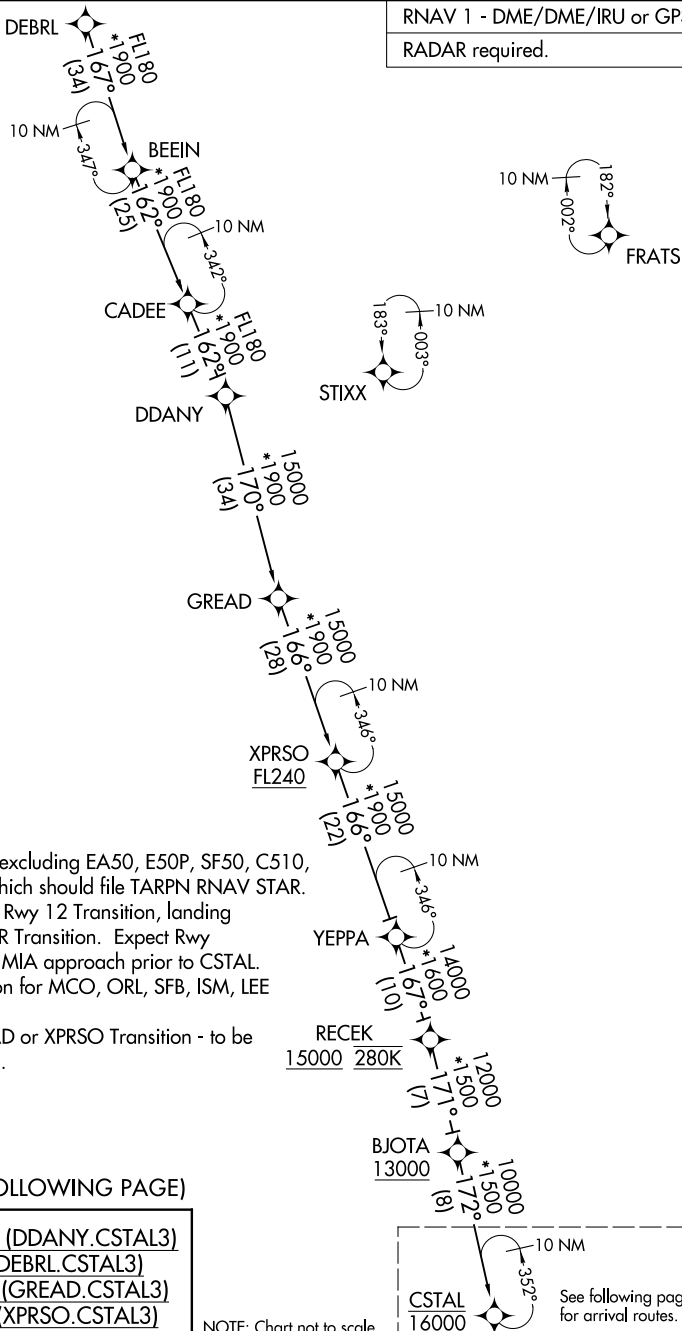


CSTAL THREE ARRIVAL (RNAV) Transition Routes

MIAMI, FLORIDA

MIAMI APP CON
 124.85 263.025
 KHST ATIS*
 132.275 269.9
 MIA D-ATIS
 119.15
 TMB ATIS
 124.0

RNAV 1 - DME/DME/IRU or GPS.
 RADAR required.



NOTE: Jet aircraft only, excluding EA50, E50P, SF50, C510, C525 aircraft, which should file TARPIN RNAV STAR.

NOTE: Landing east use Rwy 12 Transition, landing west use Rwy 26R Transition. Expect Rwy assignment from MIA approach prior to CSTAL.

NOTE: DDANY Transition for MCO, ORL, SFB, ISM, LEE Departures only.

NOTE: Do not file GREAD or XPRSO Transition - to be assigned by ATC.

(CONTINUED ON FOLLOWING PAGE)

DDANY TRANSITION (DDANY.CSTAL3)
 DEBRL TRANSITION (DEBRL.CSTAL3)
 GREAD TRANSITION (GREAD.CSTAL3)
 XPRSO TRANSITION (XPRSO.CSTAL3)

NOTE: Chart not to scale.

CSTAL 16000
 See following page for arrival routes.

SE-3, 16 APR 2026 to 14 MAY 2026

SE-3, 16 APR 2026 to 14 MAY 2026

CSTAL THREE ARRIVAL (RNAV) Transition Routes

MIAMI, FLORIDA

ARRIVAL ROUTE DESCRIPTION

LANDING MIA RUNWAYS 8L/R: From CSTAL on track 174° to cross YACKO at or below 13000, then on track 171° to cross ZYGGY at or above 11000 and at 250K, then on track 171° to cross BNFSH at or above 11000, then on track 197° to cross FENDE at or above 11000, then on track 198° to GUCCI, then on track 233° to BLYMY, then on track 274° to cross RMANI at or above 8000, then on track 273° to cross MDONA at or above 6000, then on track 273° to cross TUPAC at 5000, then on track 273°. Expect RADAR vectors to final approach course.

LANDING MIA RUNWAY 9: From CSTAL on track 174° to cross YACKO at or below 13000, then on track 171° to cross ZYGGY at or above 11000 and at 250K, then on track 171° to cross BNFSH at or above 11000, then on track 197° to cross FENDE at or above 11000, then on track 198° to GUCCI, then on track 213° to cross PRCHE at or above 8000, then on track 262° to cross DAHLA at or above 6000, then on track 272° to cross BILZZ at 5000, then on track 272°. Expect RADAR vectors to final approach course.

LANDING MIA RUNWAY 12: From CSTAL on track 174° to cross YACKO at or below 13000, then on track 171° to cross ZYGGY at or above 11000 and at 250K, then on track 171° to cross BNFSH at or above 11000, then on track 197° to cross FENDE at or above 11000, then on track 198° to GUCCI, then on track 233° to BLYMY, then on track 274° to cross RMANI at or above 8000, then on track 273° to cross MDONA at or above 6000, then on track 303° to cross KPONE at 4000, then on track 274° to cross CHUUM at 4000, then on heading 274°. Expect RADAR vectors to final approach course.

LANDING MIA RUNWAY 26L/R, 27, 30: From CSTAL on track 174° to cross YACKO at or below 13000, then on track 171° to cross ZYGGY at or above 11000 and at 250K, then on track 171° to cross BNFSH at or above 11000, then on track 185° to cross OTION at 11000 and at 230K, then on track 181° to cross BONHD at or above 9000, then on track 181° to cross GDDAY between 8000 and 9000, then on track 181° to cross RHODZ at 6000 and at 210K. Expect ILS or RNAV Rwy 26L/R approach or RADAR vectors to final approach course.

LANDING 07FA/X51/KHST/TMB: From CSTAL on track 174° to cross YACKO at or below 13000, then on track 171° to cross ZYGGY at or above 11000 and at 250K, then on track 171° to cross BNFSH at or above 11000, then on track 197° to cross KEYZZ at or above 11000, then on track 197° to cross CARMA between 9000 and 10000, then on track 197° to cross YARTO at 8000, then on heading 180°. Expect RADAR vectors to final approach course.