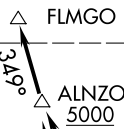


FLMGO TWO DEPARTURE(RNAV) Departure Routes

See following page for transition routes.



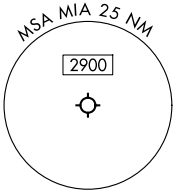
**TOP ALTITUDE:
5000**

MIAMI DEP CON
126.85 290.325
D-ATIS
133.675
CLNC DEL
135.35
CPDLC
GND CON
121.8 348.6 (8L/R, 12, 26L/R)
127.5 348.6 (9, 27, 30)
MIAMI TOWER
118.3 256.9

TAKEOFF MINIMUMS

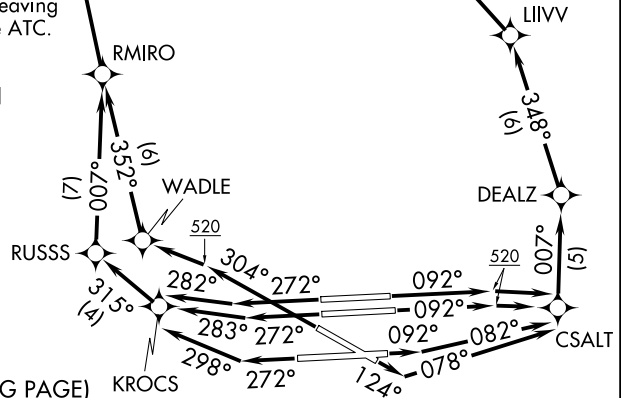
- Rwy 8L: Standard with minimum climb of 500'/NM to 520, then minimum climb of 215' to 1400.
- Rwy 8R: Standard with minimum climb of 500'/NM to 520, then minimum climb of 235' to 1400.
- Rwy 9: Standard with minimum climb of 500'/NM to 520, then minimum climb of 240' to 1400.
- Rwy 12: Standard with minimum climb of 500'/NM to 520, then minimum climb of 230' to 1400.
- Rwys 26L/R, 27, 30: Standard with minimum climb of 500'/NM to 520.

SE-3, 16 APR 2026 to 14 MAY 2026



RNAV 1 - DME/DME/IRU or GPS.
RADAR required.

- NOTE: Jet aircraft only.
- NOTE: Accelerate to 250K until leaving 10000, if unable, advise ATC.
- NOTE: WAPOM Transition ATC assigned except aircraft landing: MCO, DAB, and MLB terminal areas.



NOTE: Chart not to scale.

(CONTINUED ON FOLLOWING PAGE)

SE-3, 16 APR 2026 to 14 MAY 2026

(FLMGO2.FLMGO) 25331

AL-257 (FAA)

MIAMI INTL (MIA)
MIAMI, FLORIDA

FLMGO TWO DEPARTURE(RNAV) Transition Routes

MIAMI DEP CON
126.85 290.325
D-ATIS
133.675
CLNC DEL
135.35
CPDLC
GND CON
121.8 348.6 (8L/R, 12, 26L/R)
127.5 348.6 (9, 27, 30)
MIAMI TOWER
118.3 256.9

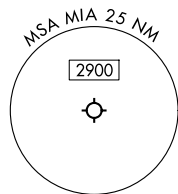
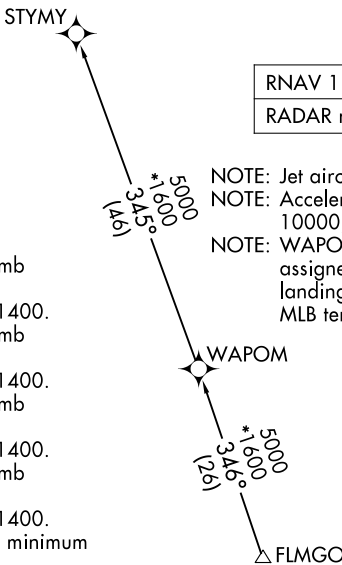
**TOP ALTITUDE:
5000**

RNAV 1 - DME/DME/IRU or GPS.
RADAR required.

NOTE: Jet aircraft only.
NOTE: Accelerate to 250K until leaving 10000, if unable, advise ATC.
NOTE: WAPOM Transition ATC assigned except aircraft landing: MCO, DAB, and MLB terminal areas.

TAKEOFF MINIMUMS

- Rwy 8L: Standard with minimum climb of 500'/NM to 520, then minimum climb of 215' to 1400.
- Rwy 8R: Standard with minimum climb of 500'/NM to 520, then minimum climb of 235' to 1400.
- Rwy 9: Standard with minimum climb of 500'/NM to 520, then minimum climb of 240' to 1400.
- Rwy 12: Standard with minimum climb of 500'/NM to 520, then minimum climb of 230' to 1400.
- Rwys 26L/R, 27, 30: Standard with minimum climb of 500'/NM to 520.



NOTE: Chart not to scale.

DEPARTURE ROUTE DESCRIPTION

SEE ADDITIONAL REQUIREMENTS ON AAUP

- TAKEOFF RUNWAYS 8L/8R:** Climb on heading 092° to 520, then direct CSALT, then on track 007° to DEALZ, then on track 348° to LIIVV, then on track 323° to GEITH, then on track 339° to cross ALNZO at or above 5000, thence. . . .
- TAKEOFF RUNWAY 9:** Climb on heading 092° to intercept course 082° to CSALT, then on track 007° to DEALZ, then on track 348° to LIIVV, then on track 323° to GEITH, then on track 339° to cross ALNZO at or above 5000, thence. . . .
- TAKEOFF RUNWAY 12:** Climb on heading 124° to intercept course 078° to CSALT, then on track 007° to DEALZ, then on track 348° to LIIVV, then on track 323° to GEITH, then on track 339° to cross ALNZO at or above 5000, thence. . . .
- TAKEOFF RUNWAY 26L:** Climb on heading 272° to intercept course 283° to KROCS, then on track 315° to RUSSS, then on track 007° to RMIRO, then on track 353° to cross ALNZO at or above 5000, thence. . . .
- TAKEOFF RUNWAY 26R:** Climb on heading 272° to intercept course 282° to KROCS, then on track 315° to RUSSS, then on track 007° to RMIRO, then on track 353° to cross ALNZO at or above 5000, thence. . . .
- TAKEOFF RUNWAY 27:** Climb on heading 272° to intercept course 298° to KROCS, then on track 315° to RUSSS, then on track 007° to RMIRO, then on track 353° to cross ALNZO at or above 5000, thence. . . .
- TAKEOFF RUNWAY 30:** Climb on heading 304° to 520, then direct WADLE, then on track 352° to RMIRO, then on track 353° to cross ALNZO at or above 5000, thence. . . .

. . . .on track 349° to FLMGO, then on assigned transition. Maintain 5000. Expect filed altitude within 10 minutes after departure.

STYMY TRANSITION (FLMGO2.STYMY)
WAPOM TRANSITION (FLMGO2.WAPOM)

FLMGO TWO DEPARTURE(RNAV) Transition Routes
(FLMGO2.FLMGO) 21MAR24

MIAMI, FLORIDA
MIAMI INTL (MIA)

SE-3, 16 APR 2026 to 14 MAY 2026

SE-3, 16 APR 2026 to 14 MAY 2026