

RNAV-1 DME/DME/IRU or GPS.
 RADAR required for NON-GPS equipped aircraft.
 RADAR required.

**TOP ALTITUDE:
5000**

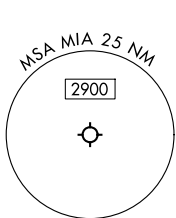
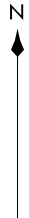
NOTE: Jet aircraft only.
 NOTE: Accelerate to 250K until leaving 10000, if unable, advise ATC.
 NOTE: SHAQQ and BAGGS transitions ATC assigned except aircraft departing MIA.

GLADZ FOUR DEPARTURE (RNAV) (GLADZ4.GLADZ) 31OCT24

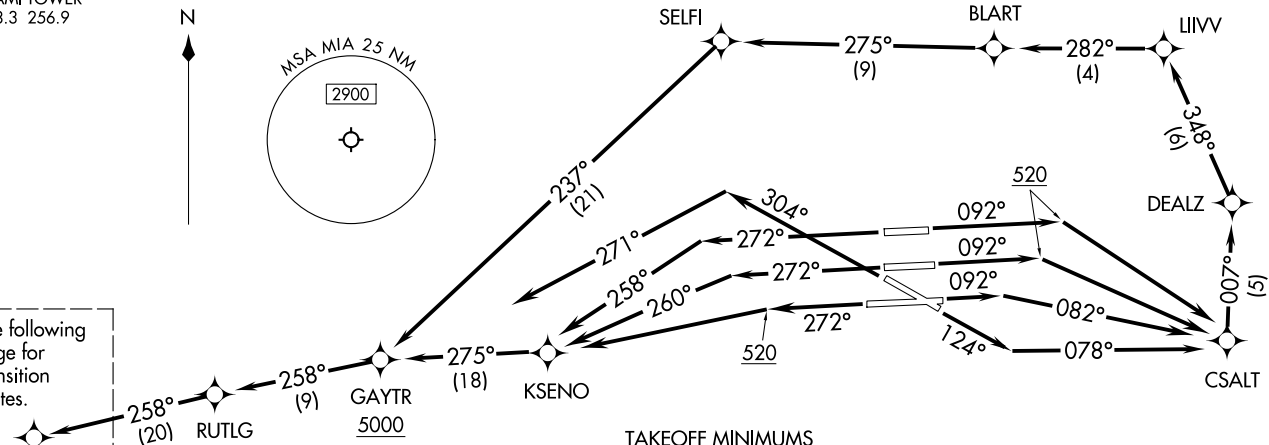
GLADZ FOUR DEPARTURE (RNAV) Departure Routes

MIAMI FLORIDA
MIAMI INTL (MIA)

MIAMI DEP CON
 125.5 354.1 (Departing W)
 126.85 290.325 (Departing E)
 D-ATIS
 133.675
 CLNC DEL
 135.35
 CPDLC
 GND CON
 121.8 348.6 (8L/R, 12, 26L/R)
 127.5 348.6 (9, 27, 30)
 MIAMI TOWER
 118.3 256.9



See following page for transition routes.



TAKEOFF MINIMUMS
 Rwy 8L: Standard with minimum climb of 500'/NM to 520, then minimum climb of 215'/NM to 1400.
 Rwy 8R: Standard with minimum climb of 500'/NM to 520, then minimum climb of 235'/NM to 1400.
 Rwy 9: Standard with minimum climb of 500'/NM to 520, then minimum climb of 240'/NM to 1400.
 Rwy 12: Standard with minimum climb of 500'/NM to 520, then minimum climb of 230'/NM to 1400.
 Rws 26L/R, 27, 30: Standard with minimum climb of 500'/NM to 520.

NOTE: Chart not to scale.

(CONTINUED ON FOLLOWING PAGE)

(GLADZ4.GLADZ) 25331

AL-257 (FAA)
Departure Routes

MIAMI INTL (MIA)
MIAMI, FLORIDA

(GLADZ4, GLADZ) 31OCT24

GLADZ FOUR DEPARTURE (RNAV) Transition Routes

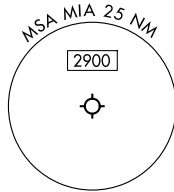
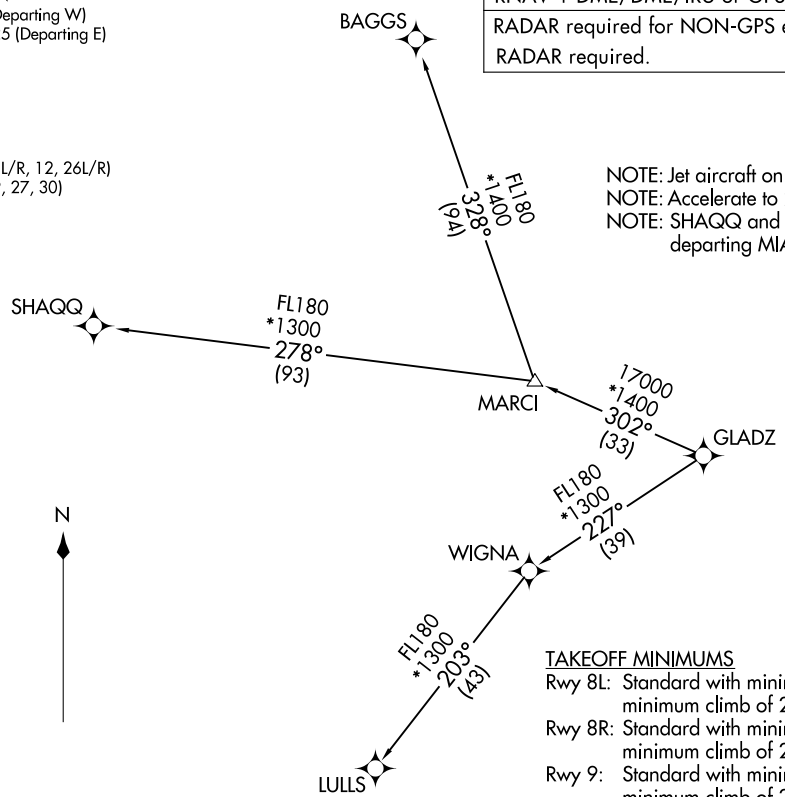
MIAMI, FLORIDA
MIAMI INTL (MIA)

MIAMI DEP CON
125.5 354.1 (Departing W)
126.85 290.325 (Departing E)
D-ATIS
133.675
CLNC DEL
135.35
CPDLC
GND CON
121.8 348.6 (8L/R, 12, 26L/R)
127.5 348.6 (9, 27, 30)
MIAMI TOWER
118.3 256.9

RNAV-1 DME/DME/IRU or GPS.
RADAR required for NON-GPS equipped aircraft.
RADAR required.

**TOP ALTITUDE:
5000**

NOTE: Jet aircraft only.
NOTE: Accelerate to 250K until leaving 10000, if unable, advise ATC.
NOTE: SHAQQ and BAGGS transitions ATC assigned except aircraft departing MIA.



TAKEOFF MINIMUMS

- Rwy 8L: Standard with minimum climb of 500'/NM to 520, then minimum climb of 215'/NM to 1400.
- Rwy 8R: Standard with minimum climb of 500'/NM to 520, then minimum climb of 235'/NM to 1400.
- Rwy 9: Standard with minimum climb of 500'/NM to 520, then minimum climb of 240'/NM to 1400.
- Rwy 12: Standard with minimum climb of 500'/NM to 520, then minimum climb of 230'/NM to 1400.
- Rwys 26L/R, 27, 30: Standard with minimum climb of 500'/NM to 520.

NOTE: Chart not to scale. (CONTINUED ON FOLLOWING PAGE)

(GLADZ4, GLADZ) 25331

AL-257 (FAA)
GLADZ FOUR DEPARTURE (RNAV) Transition Routes

MIAMI INTL (MIA)
MIAMI, FLORIDA

GLADZ FOUR DEPARTURE (RNAV)



DEPARTURE ROUTE DESCRIPTION SEE ADDITIONAL REQUIREMENTS ON AAUP

TAKEOFF RUNWAYS 8L/R: Climb on heading 092° to 520, then direct CSALT, then on track 007° to DEALZ, then on track 348° to LIIVV, then on track 282° to BLART, then on track 275° to SELFI, then on track 237° to cross GAYTR at or above 5000, thence. . . .

TAKEOFF RUNWAY 9: Climb on heading 092° to intercept course 082° to CSALT, then on track 007° to DEALZ, then on track 348° to LIIVV, then on track 282° to BLART, then on track 275° to SELFI, then on track 237° to cross GAYTR at or above 5000, thence. . . .

TAKEOFF RUNWAY 12: Climb on heading 124° to intercept course 078° to CSALT, then on track 007° to DEALZ, then on track 348° to LIIVV, then on track 282° to BLART, then on track 275° to SELFI, then on track 237° to cross GAYTR at or above 5000, thence. . . .

TAKEOFF RUNWAY 26L: Climb on heading 272° to intercept course 260° to KSENO, then on track 275° to cross GAYTR at or above 5000, thence. . . .

TAKEOFF RUNWAY 26R: Climb on heading 272° to intercept course 258° to KSENO, then on track 275° to cross GAYTR at or above 5000, thence. . . .

TAKEOFF RUNWAY 27: Climb on heading 272° to 520, then direct KSENO, then on track 275° to cross GAYTR at or above 5000, thence. . . .

TAKEOFF RUNWAY 30: Climb on heading 304° to intercept course 271° to cross GAYTR at or above 5000, thence. . . .

. . . .on track 258° to RUTLG, then on track 258° to GLADZ, then on transition. Maintain 5000, expect clearance to filed altitude 10 minutes after departure.

BAGGS TRANSITION (GLADZ4.BAGGS)

LULLS TRANSITION (GLADZ4.LULLS)

SHAQQ TRANSITION (GLADZ4.SHAQQ)

SE-3, 16 APR 2026 to 14 MAY 2026

SE-3, 16 APR 2026 to 14 MAY 2026