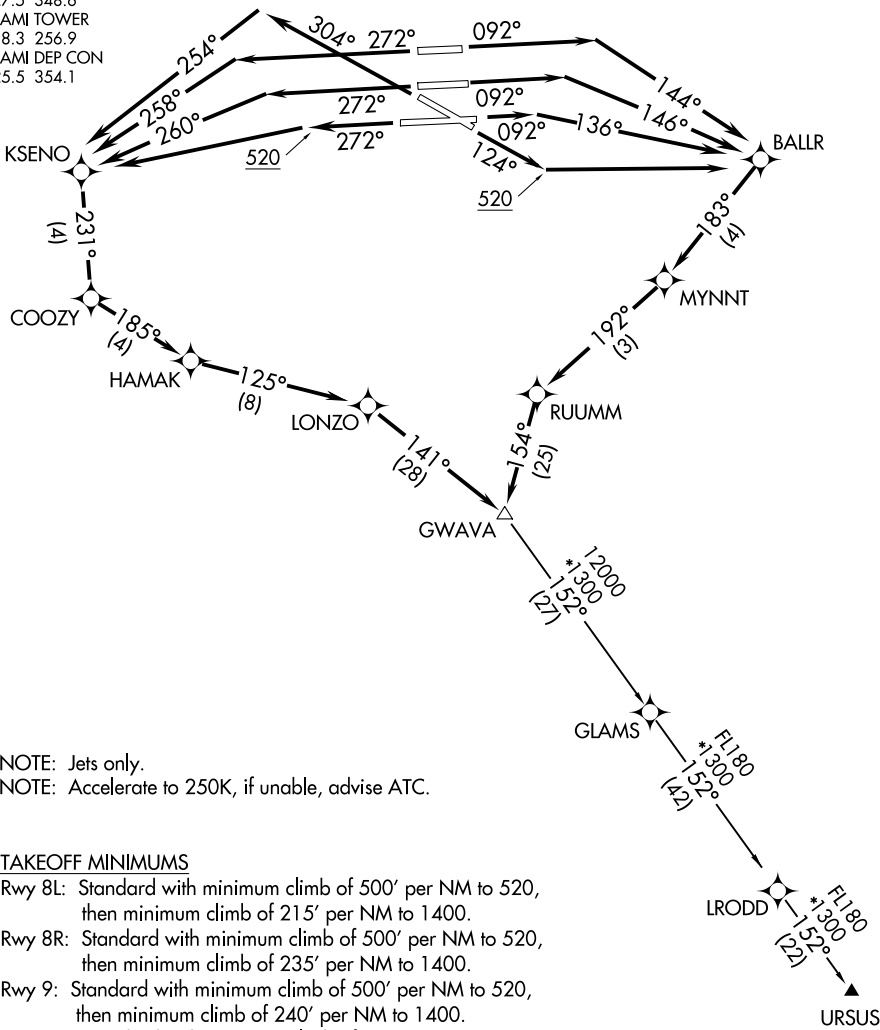


GWAVA TWO DEPARTURE (RNAV)

D-ATIS
 133.675
 CLNC DEL
 135.35
 CPDLC
 GND CON
 (Rwys 8L/R, 12, 26L/R)
 121.8 348.6
 (Rwys 9, 27, 30)
 127.5 348.6
 MIAMI TOWER
 118.3 256.9
 MIAMI DEP CON
 125.5 354.1

**TOP ALTITUDE:
5000**

RNAV 1-DME/DME/IRU or GPS.
 RADAR required.



NOTE: Jets only.
 NOTE: Accelerate to 250K, if unable, advise ATC.

TAKEOFF MINIMUMS

- Rwy 8L: Standard with minimum climb of 500' per NM to 520, then minimum climb of 215' per NM to 1400.
- Rwy 8R: Standard with minimum climb of 500' per NM to 520, then minimum climb of 235' per NM to 1400.
- Rwy 9: Standard with minimum climb of 500' per NM to 520, then minimum climb of 240' per NM to 1400.
- Rwy 12: Standard with minimum climb of 500' per NM to 520, then minimum climb of 230' per NM to 1400.
- Rwys 26L/R, 27, 30: Standard with minimum climb of 500' per NM to 520.

(NARRATIVE ON FOLLOWING PAGE)

NOTE: Chart not to scale.

GWA TWO DEPARTURE (RNAV)



DEPARTURE ROUTE DESCRIPTION SEE ADDITIONAL REQUIREMENTS ON AAUP

TAKEOFF RUNWAY 8L: Climb on heading 092° to intercept course 144° to BALLR, then on track 183° to MYNNT, then on track 192° to RUUMM, then on track 154° to GWA, thence . . .

TAKEOFF RUNWAY 8R: Climb on heading 092° to intercept course 146° to BALLR, then on track 183° to MYNNT, then on track 192° to RUUMM, then on track 154° to GWA, thence . . .

TAKEOFF RUNWAY 9: Climb on heading 092° to intercept course 136° to BALLR, then on track 183° to MYNNT, then on track 192° to RUUMM, then on track 154° to GWA, thence . . .

TAKEOFF RUNWAY 12: Climb on heading 124° to 520, then direct BALLR, then on track 183° to MYNNT, then on track 192° to RUUMM, then on track 154° to GWA, thence . . .

TAKEOFF RUNWAY 26L: Climb on heading 272° to intercept course 260° to KSENO, then on track 231° to COOZY, then on track 185° to HAMAK, then on track 125° to LONZO, then on track 141° to GWA, thence . . .

TAKEOFF RUNWAY 26R: Climb on heading 272° to intercept course 258° to KSENO, then on track 231° to COOZY, then on track 185° to HAMAK, then on track 125° to LONZO, then on track 141° to GWA, thence . . .

TAKEOFF RUNWAY 27: Climb on heading 272° to 520, then direct KSENO, then on track 231° to COOZY, then on track 185° to HAMAK, then on track 125° to LONZO, then on track 141° to GWA, thence . . .

TAKEOFF RUNWAY 30: Climb on heading 304° to intercept course 254° to KSENO, then on track 231° to COOZY, then on track 185° to HAMAK, then on track 125° to LONZO, then on track 141° to GWA, thence . . .

. . . then on assigned transition, maintain 5000, expect filed altitude 10 minutes after departure.

URSUS TRANSITION (GWA2.URSUS)

SE-3, 16 APR 2026 to 14 MAY 2026

SE-3, 16 APR 2026 to 14 MAY 2026