

LOC/DME I-VIN 109.1 Chan 28	APP CRS 272°	Rwy Ldg 10220 TDZE 9 Apt Elev 9
---	------------------------	--

ILS or LOC RWY 26L

MIAMI INTL (MIA)

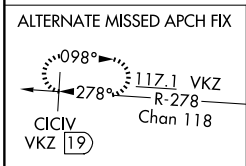
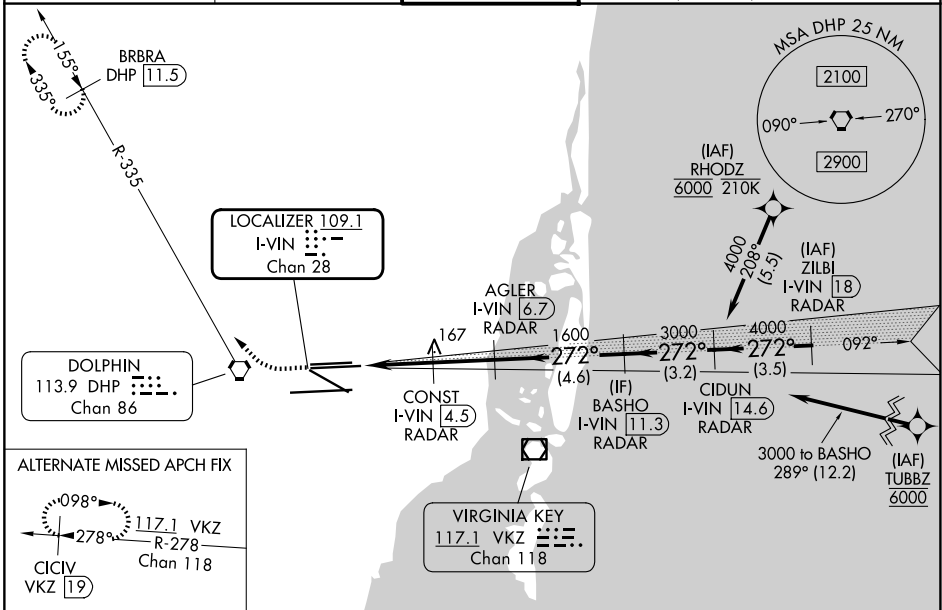
DME required. RNP APCH-GPS. From RHODZ, TUBBZ.

Simultaneous approach authorized. Inop table does not apply to S-ILS 26L all Cats. For inop ALS, increase S-LOC 26L Cats C/D visibility to RVR 6000.

MALSF

MISSED APPROACH: Climb to 800 then climbing right turn to 4000 on heading 290° and DHP VORTAC R-335 to BRBRA/DHP 11.5 DME and hold, continue climb-in-hold to 4000.

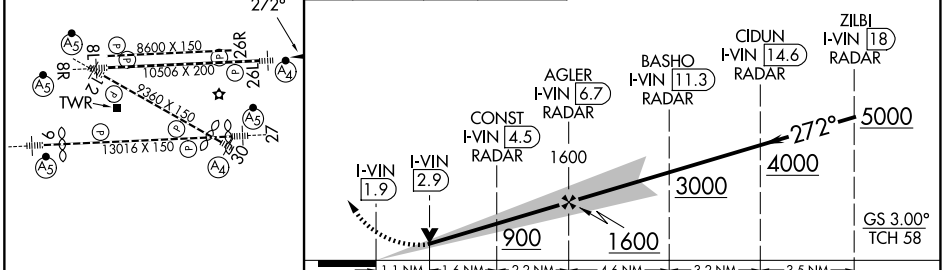
D-ATIS 119.15	MIAMI APP CON 124.85 322.3	MIAMI TOWER 118.3 256.9	GND CON 121.8 (8L/8R/12/26L/26R) 127.5 (9/27/30) 348.6
-------------------------	--------------------------------------	-----------------------------------	---



ELEV 9	D	TDZE 9
--------	----------	--------

800 4000 DHP R-335 BRBRA DHP 11.5

VGSI and ILS glidepath not coincident (VGSI Angle 3.00/TCH 73).



CATEGORY	A	B	C	D
S-ILS 26L	209/40 200 (200-¾)			
S-LOC 26L	420/40	411 (500-¾)	420/50	411 (500-1)

SE-3, 16 APR 2026 to 14 MAY 2026

SE-3, 16 APR 2026 to 14 MAY 2026