

MIAMI TWO DEPARTURE
(MIA2.MIA) 26DEC24

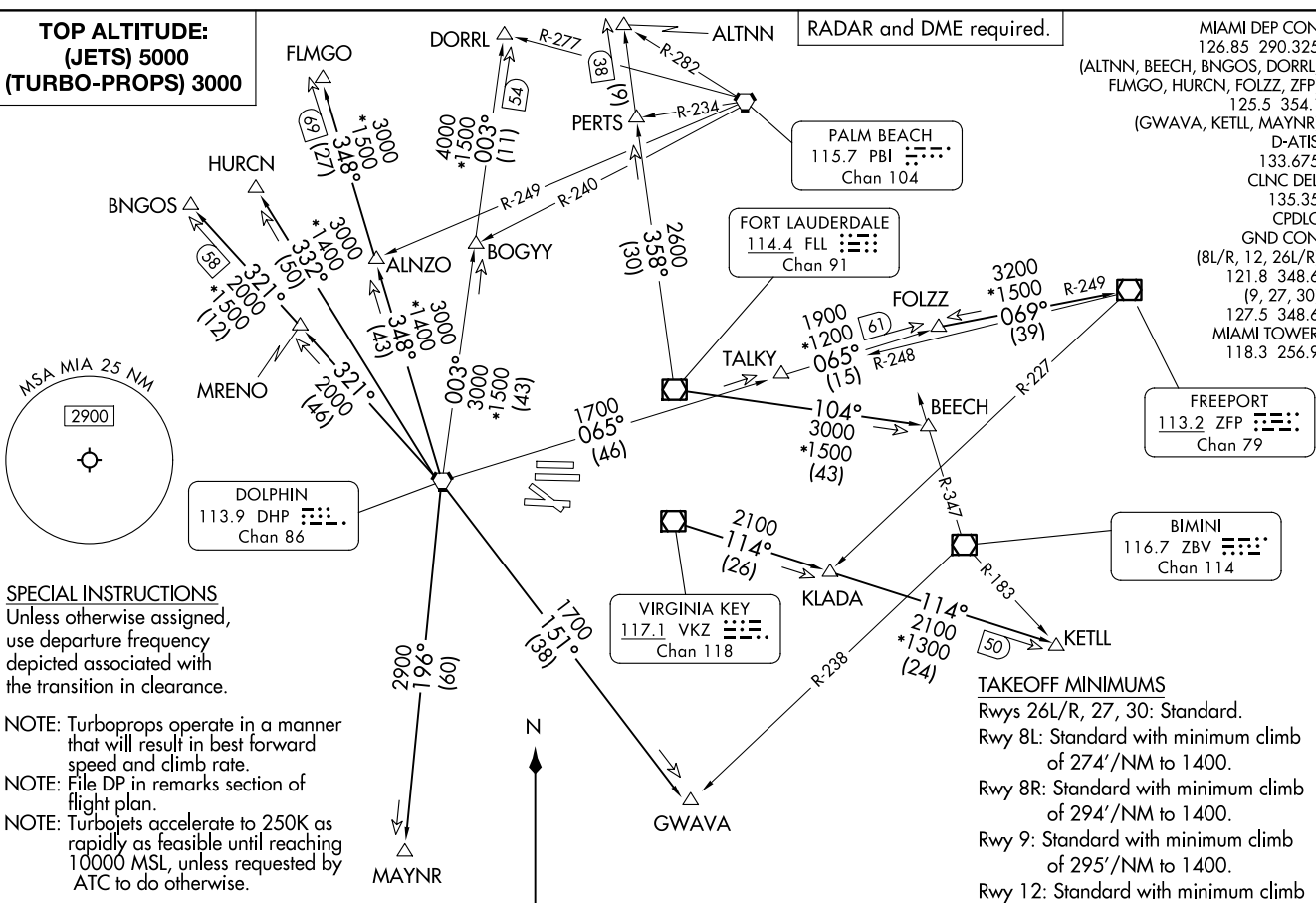
MIAMI, FLORIDA
MIAMI INTL (MIA)

**TOP ALTITUDE:
(JETS) 5000
(TURBO-PROPS) 3000**

SPECIAL INSTRUCTIONS
Unless otherwise assigned,
use departure frequency
depicted associated with
the transition in clearance.

- NOTE: Turboprops operate in a manner that will result in best forward speed and climb rate.
- NOTE: File DP in remarks section of flight plan.
- NOTE: Turbojets accelerate to 250K as rapidly as feasible until reaching 10000 MSL, unless requested by ATC to do otherwise.

NOTE: Chart not to scale.



RADAR and DME required.

MIAMI DEP CON
126.85 290.325
(ALTN, BEECH, BNGOS, DORRL,
FLMGO, HURCN, FOLZZ, ZFP)
125.5 354.1
(GWAVA, KETLL, MAYNR)
D-ATIS
133.675
CLNIC DEL
135.35
CPDIC
GND CON
(8L/R, 12, 26L/R)
121.8 348.6
(9, 27, 30)
127.5 348.6
MIAMI TOWER
118.3 256.9

FREEPORT
113.2 ZFP
Chan 79

BIMINI
116.7 ZBV
Chan 114

VIRGINIA KEY
117.1 VKZ
Chan 118

FORT LAUDERDALE
114.4 FL
Chan 91

PALM BEACH
115.7 PBI
Chan 104

TAKEOFF MINIMUMS
Rwys 26L/R, 27, 30: Standard.
Rwy 8L: Standard with minimum climb
of 274'/NM to 1400.
Rwy 8R: Standard with minimum climb
of 294'/NM to 1400.
Rwy 9: Standard with minimum climb
of 295'/NM to 1400.
Rwy 12: Standard with minimum climb
of 289'/NM to 1400.

(CONTINUED ON FOLLOWING PAGE)

(MIA2.MIA) 25331
MIAMI TWO DEPARTURE

AL-257 (FAA)

MIAMI INTL (MIA)
MIAMI, FLORIDA

MIAMI TWO DEPARTURE



DEPARTURE ROUTE DESCRIPTION

TAKEOFF ALL RUNWAYS: Climb on assigned heading for RADAR vectors to assigned transition. Jets climb and maintain 5000, props and turboprops climb and maintain 3000. Expect filed altitude 10 minutes after departure.

ALTNN TRANSITION (MIA2.ALTNN): From over FLL VOR/DME on FLL R-358 to ALTNN.

BEECH TRANSITION (MIA2.BEECH): From over FLL VOR/DME on FLL R-104 to BEECH.

BNGOS TRANSITION (MIA2.BNGOS): From over DHP VORTAC on DHP R-321 to BNGOS.

DORRL TRANSITION (MIA2.DORRL): From over DHP VORTAC on DHP R-003 to DORRL.

FLMGO TRANSITION (MIA2.FLMGO): From over DHP VORTAC on DHP R-348 to FLMGO.

FOLZZ TRANSITION (MIA2.FOLZZ): From over DHP VORTAC on DHP R-065 to FOLZZ.

FREEPORT TRANSITION (MIA2.ZFP): From over DHP VORTAC on DHP R-065 to FOLZZ then on ZFP R-249 to ZFP VOR/DME.

GWAVA TRANSITION (MIA2.GWAVA): From over DHP VORTAC on DHP R-151 to GWAVA.

HURCN TRANSITION (MIA2.HURCN): From over DHP VORTAC on DHP R-332 to HURCN.

KETLL TRANSITION (MIA2.KETLL): From over VKZ VOR/DME on VKZ R-114 to KETLL.

MAYNR TRANSITION (MIA2.MAYNR): From over DHP VORTAC on DHP R-196 to MAYNR.

SE-3, 16 APR 2026 to 14 MAY 2026

SE-3, 16 APR 2026 to 14 MAY 2026