

MIAMI, FLORIDA

AL-257 (FAA)

25275

WAAS CH <b>86903</b> <b>W26A</b>	APP CRS <b>272°</b>	Rwy Ldg <b>8600</b> TDZE <b>9</b> Apt Elev <b>9</b>
--	------------------------	---

# RNAV (GPS) RWY 26R

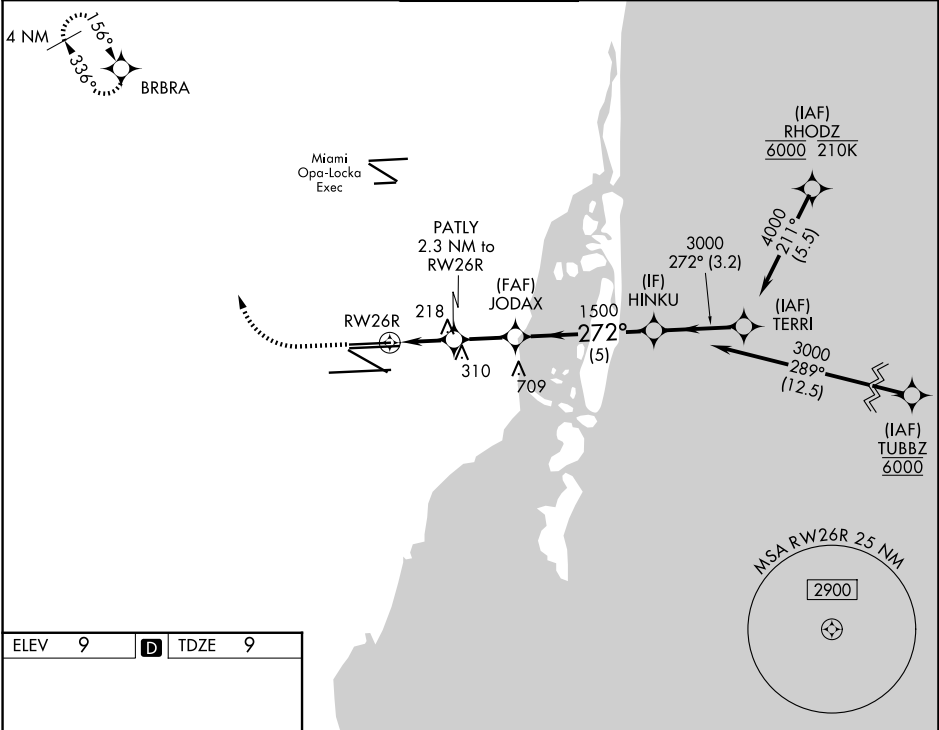
MIAMI INTL (MIA)

RNP APCH - GPS.

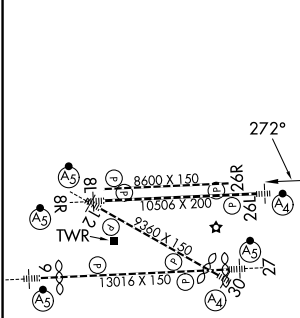
Simultaneous approach authorized. LNAV procedure NA during simultaneous operations. Use of FD or AP required during simultaneous operations. For uncompensated Baro-VNAV systems, LNAV/VNAV NA below 9°C or above 54°C.

MISSED APPROACH: Climb to 800 then climbing right turn to 4000 direct BRBRA and hold, continue climb-in-hold to 4000.

D-ATIS <b>119.15</b>	MIAMI APP CON <b>124.85 322.3</b>	MIAMI TOWER <b>118.3 256.9</b>	GND CON <b>121.8</b> (8L/8R/12/26L/26R) <b>127.5</b> (9/27/30)	<b>348.6</b>
-------------------------	--------------------------------------	-----------------------------------	--	--------------



ELEV 9	<b>D</b>	TDZE 9
--------	----------	--------



CATEGORY	A	B	C	D
LPV DA		265- <sup>3</sup> / <sub>4</sub>	256 (300- <sup>3</sup> / <sub>4</sub> )	
LNAV/VNAV DA		432-1 <sup>1</sup> / <sub>4</sub>	423 (500-1 <sup>1</sup> / <sub>4</sub> )	
LNAV MDA	480-1	471 (500-1)	480-1 <sup>3</sup> / <sub>8</sub>	471 (500-1 <sup>3</sup> / <sub>8</sub> )

TDZ/CL Rwy 8R  
REIL Rwy 8L and 26R  
HIRL all Rwy

MIAMI, FLORIDA  
Amdt 5 14JUL22

25°48'N-80°17'W

# RNAV (GPS) RWY 26R

MIAMI INTL (MIA)

SE-3, 16 APR 2026 to 14 MAY 2026

SE-3, 16 APR 2026 to 14 MAY 2026