

MIAMI, FLORIDA

AL-257 (FAA)

25275

WAAS CH <b>81931</b> <b>W09A</b>	APP CRS <b>092°</b>	Rwy Ldg <b>11397</b> TDZE <b>8</b> Apt Elev <b>9</b>
--	------------------------	--

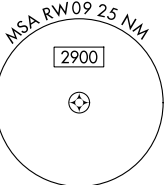
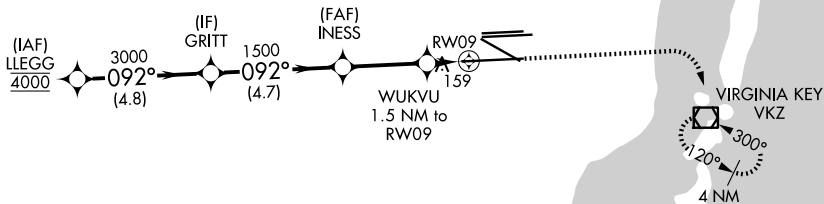
# RNAV (GPS) RWY 9

MIAMI INTL (MIA)

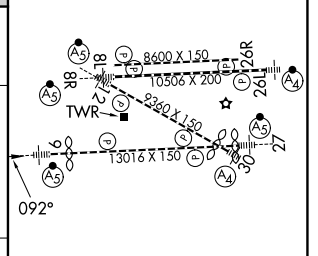
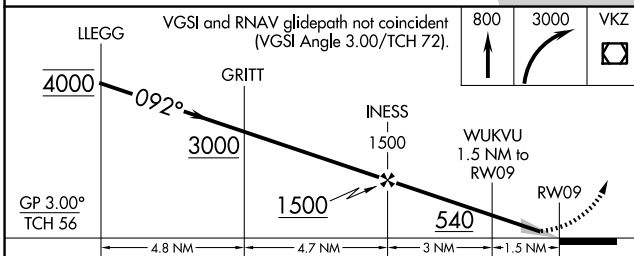
RNP APCH - GPS.	MALSRL	MISSED APPROACH: Climb to 800 then climbing right turn to 3000 direct VKZ VOR/DME and hold, continue climb-in-hold to 3000.
<p>▼ For uncompensated Baro-VNAV systems, LNAV/VNAV NA below 8°C or above 54°C. Simultaneous approach authorized. LNAV procedure NA during simultaneous operations. Use of FD or AP required during simultaneous operations. For inop ALS, increase LPV Cat E visibility to RVR 4000, LNAV/VNAV all Cats visibility to RVR 6000, LNAV Cat E visibility to 1<math>\frac{1}{8}</math> SM.</p> <p>*RVR 1800 authorized with use of FD or AP or HUD to DA.</p>		

D-ATIS <b>119.15</b>	MIAMI APP CON <b>124.85 322.3</b>	MIAMI TOWER <b>118.3 256.9</b>	GND CON <b>121.8</b> (8L/8R/12/26L/26R) <b>127.5</b> (9/27/30) <b>348.6</b>
-------------------------	--------------------------------------	-----------------------------------	---

CAUTION: Lights on highway 1/4 mile south of final approach course may be mistaken for runway.



ELEV 9	TDZE 8
--------	--------



CATEGORY	A	B	C	D	E
LPV DA*	208/24		200 (200-1/2)		
LNAV/VNAV DA	426/40		418 (500-3/4)		
LNAV MDA	460/24	452 (500-1/2)	460/45	452 (500-7/8)	

TDZ/CL Rwy 8R
REIL Rwy 8L and 26R
HIRL all Rwy 9

MIAMI, FLORIDA  
Amdt 2 14JUL22

25°48'N-80°17'W

# RNAV (GPS) RWY 9

MIAMI INTL (MIA)

SE-3, 16 APR 2026 to 14 MAY 2026

SE-3, 16 APR 2026 to 14 MAY 2026