

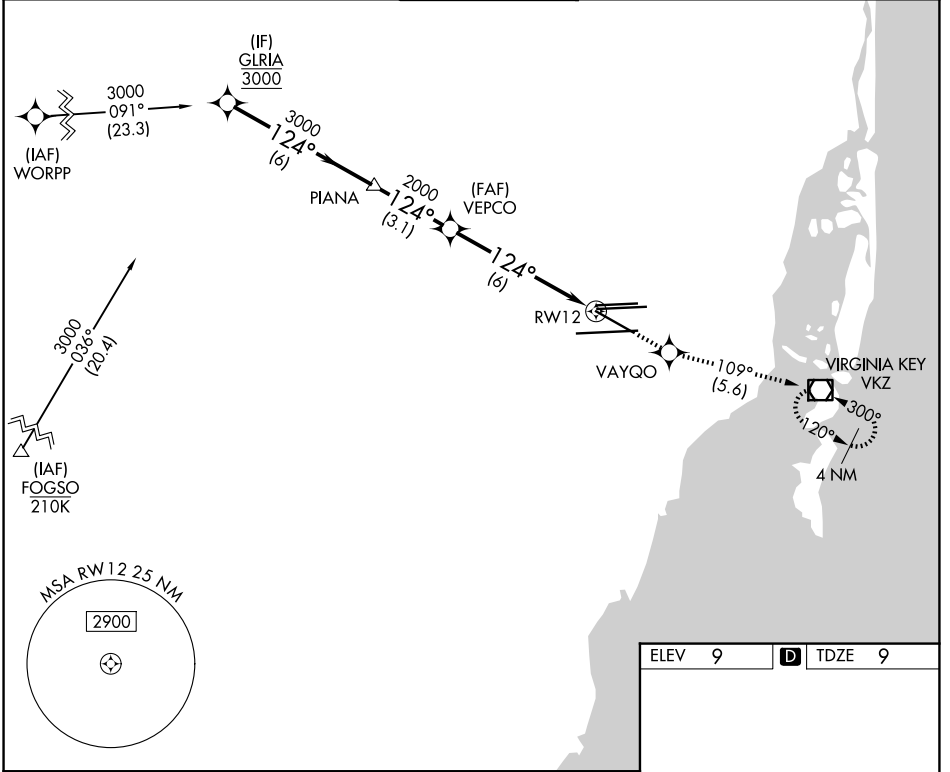
APP CRS	Rwy Ldg	<b>8579</b>
<b>124°</b>	TDZE	<b>9</b>
	Apt Elev	<b>9</b>

# RNAV (RNP) Y RWY 12

MIAMI INTL (MIA)

RNP AR APCH - GPS. Authorization required.	MALSR	MISSED APPROACH: Climb to 3000 direct VAYQO and on track 109° to VKZ VOR/DME and hold, continue climb-in-hold to 3000.
▼ For uncompensated Baro-VNAV systems, procedure NA below 9°C or above 54°C.		

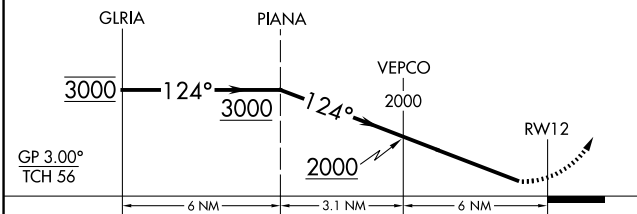
D-ATIS <b>119.15</b>	MIAMI APP CON <b>124.85 322.3</b>	MIAMI TOWER <b>118.3 256.9</b>	GND CON <b>121.8</b> (8L/8R/12/26L/26R) <b>127.5</b> (9/27/30) <b>348.6</b>
-------------------------	--------------------------------------	-----------------------------------	-----------------------------------------------------------------------------------



SE-3, 16 APR 2026 to 14 MAY 2026

SE-3, 16 APR 2026 to 14 MAY 2026

VGSI and RNAV glidepath not coincident (VGSI Angle 3.00/TCH 72).	3000	VAYQO	VKZ
			tr 109°



ELEV 9	<b>D</b> TDZE 9
--------	-----------------

Diagram details: Altitudes 3000, 2400, 2000, 1500, 1300. Distances 1.50, 2.00, 2.00, 2.00, 2.00. Symbols include VOR/DME (VKZ), TWR, and various altimeter settings (AS).

CATEGORY	A	B	C	D
RNP 0.30 DA		462/50	453 (500-1)	
<b>AUTHORIZATION REQUIRED</b>				
TDZL/RCLS Rwy 8R REIL Rwys 8L and 26R HIRL all Rwys				