

MIAMI, FLORIDA

AL-257 (FAA)

26022


APP CRS	Rwy Ldg	12755
272°	TDZE	9
	Apt Elev	9

RNAV (RNP) Z RWY 27

MIAMI INTL (MIA)

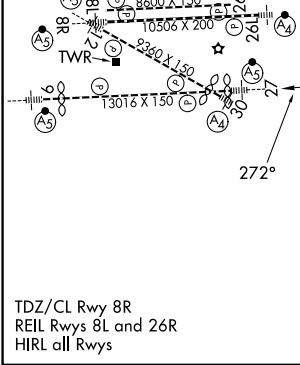
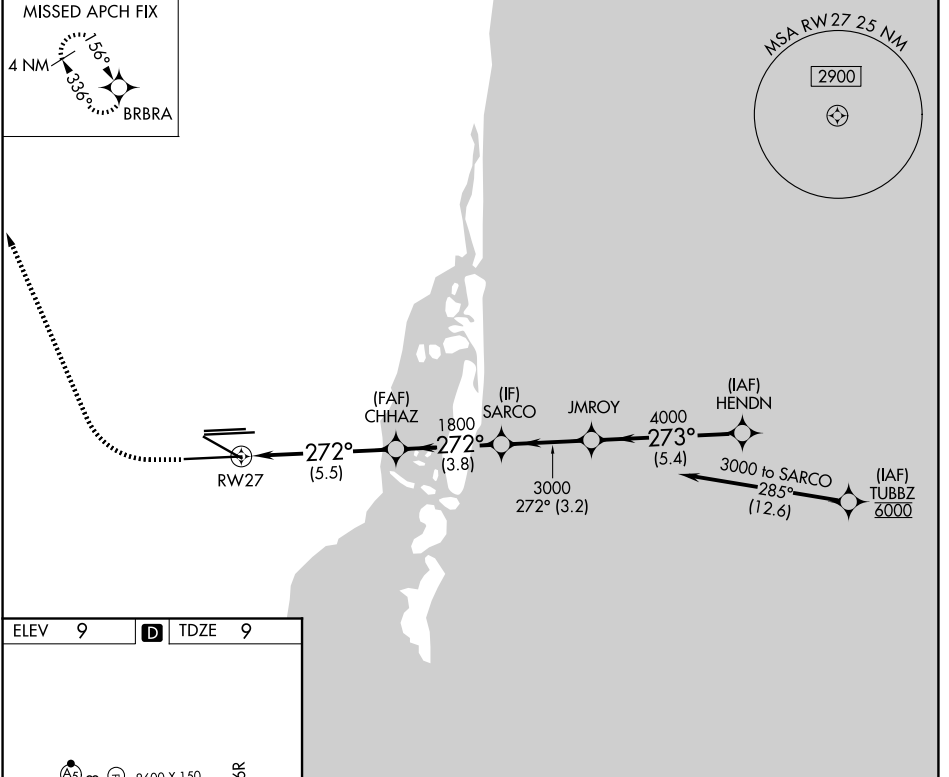
RNP AR APCH-GPS.

▼ Simultaneous approach authorized. For uncompensated Baro-VNAV systems, procedure NA below 8°C or above 54°C. For inop ALS, increase RNP 0.11 visibility to RVR 4500 all Cats.

MALSR 

MISSED APPROACH: Climb to 800 then climbing right turn to 4000 direct BRBRA and hold, continue climb-in-hold to 4000.

D-ATIS 119.15	MIAMI APP CON 124.85 322.3	MIAMI TOWER 118.3 256.9	GND CON 121.8 (8L/8R/12/26L/26R) 348.6 127.5 (9/27/30)
-------------------------	--------------------------------------	-----------------------------------	--



ELEV 9	D	TDZE 9		
<p>800 4000 BRBRA VGSi and RNAV glidepath not coincident (VGSi Angle 3.00/TCH 71).</p> <p>HENDN 5000</p> <p>CHHAZ 1800 SARCO JMROY 4000</p> <p>RWY 27 1800 3000</p> <p>GP 3.00° TCH 55</p>				
CATEGORY	A	B	C	D
RNP 0.11 DA		327/24	318 (400-½)	
RNP 0.30 DA		405/35	396 (400-¾)	
AUTHORIZATION REQUIRED				

MIAMI, FLORIDA
Amdt 3 12AUG21

25°48'N-80°17'W

RNAV (RNP) Z RWY 27

MIAMI INTL (MIA)

SE-3, 16 APR 2026 to 14 MAY 2026

SE-3, 16 APR 2026 to 14 MAY 2026