

WAAS CH 40205 W27A	APP CRS 272°	Rwy Ldg 12755 TDZE 9 Apt Elev 9
--	------------------------	--

RNAV (GPS) Y RWY 27

MIAMI INTL (MIA)

RNP APCH-GPS

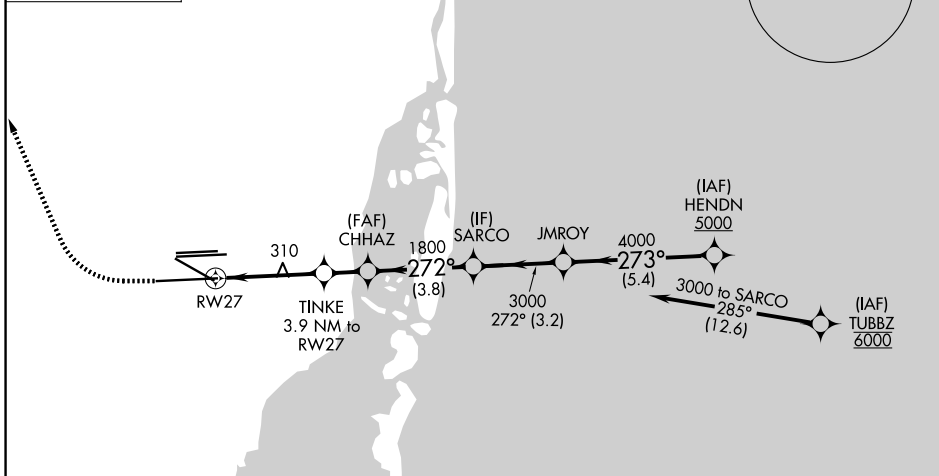
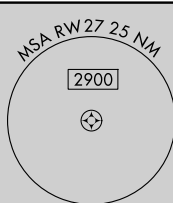
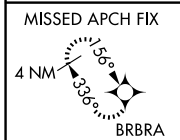
Simultaneous approach authorized. LNAV procedure NA during simultaneous operations. Use of FD or AP required during simultaneous operations. For uncompensated Baro-VNAV systems, LNAV/VNAV NA below 8°C or above 54°C. *RVR 1800 authorized with use of FD or AP or HUD to DA.

MALSR



MISSED APPROACH: Climb to 800 then climbing right turn to 4000 direct BRBRA and hold, continue climb-in-hold to 4000.

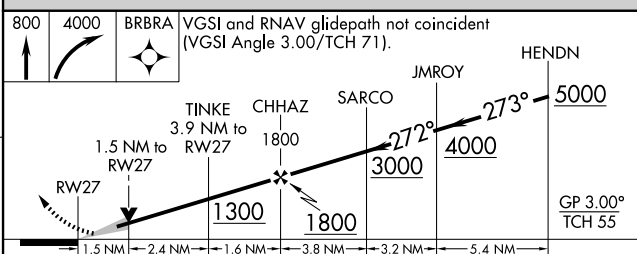
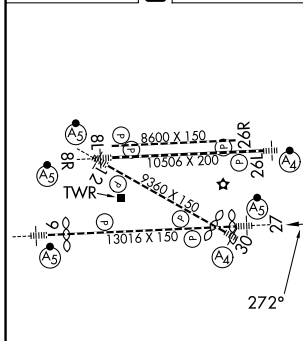
D-ATIS 119.15	MIAMI APP CON 124.85 322.3	MIAMI TOWER 118.3 256.9	GND CON 121.8 (8L/8R/12/26L/26R) 127.5 (9/27/30) 348.6
-------------------------	--------------------------------------	-----------------------------------	---



SE-3, 16 APR 2026 to 14 MAY 2026

SE-3, 16 APR 2026 to 14 MAY 2026

ELEV 9	D	TDZE 9
--------	----------	--------



TDZ/CL Rwy 8R REIL Rwy 8L and 26R HIRL all Rwy	800	4000	BRBRA	VGSI and RNAV glidepath not coincident (VGSI Angle 3.00°/TCH 71).	HENDN 5000		
	1.5 NM	2.4 NM	1.6 NM	3.8 NM	3.2 NM	5.4 NM	
	1.5 NM	2.4 NM	1.6 NM	3.8 NM	3.2 NM	5.4 NM	
CATEGORY	A		B		C		D
LPV DA*	209/24		200 (200-½)				
LNAV/VNAV DA	439/40		430 (500-¾)				
LNAV MDA	560/24		551 (600-½)		560/60		551 (600-¼)